

DATASHEET

# Rocket<sup>®</sup> TRUfusion Enterprise

Automated, traceable, secure CAD and PLM data exchange

## Product Benefits

- Improve productivity of product design and engineering staff
- Track high-value IP and simplify compliance with internal or regulatory policies, standards, and best practices
- Prevent costly mistakes, project delays, and false starts
- Reduce the cost burden and time needed to share design and engineering data
- Streamline and standardize data exchange for product designers/engineers and buyers

Collaborative design requires sharing your most valuable asset—product design data—with extended teams that may include customers, suppliers, and partners. Design activities and changes happen across companies, geographies, systems, and communications protocols, often with interdependent development cycles.

Rocket<sup>®</sup> TRUfusion<sup>™</sup> Enterprise takes the friction out of collaborative design, saving you time, helping prevent errors, and reducing risk. It replaces disconnected, manual data exchange tasks with a single automated process that integrates with key systems for managing engineering and design data. TRUfusion Enterprise is a simple, cost-effective complementary solution for companies using a PLM system such as Siemens Teamcenter, allowing you to easily and securely manage exchanges of CAD files and related product design data from within your PLM system. If you have high transaction volumes for CAD data exchange and PLM workflow, the potential savings can be thousands (or even tens of thousands) of man-hours per year.





Rocket TRUFusion Enterprise automates repetitive file-exchange activities between your company and customers, suppliers, and partners. A simple process automates every step required for CAD and PLM data exchange:

- Importing/exporting to different PLM systems
- Translating CAD data into different formats
- Checking, restructuring, and renaming files to ensure integrity and quality
- Sending and receiving data
- Tracking key activities

It's easy to configure TRUFusion Enterprise with business rules for handling specific file types, as well as meeting customer or partner mandates. The software delivers product design data through a secure web portal or Odette File Transfer Protocol (OFTP), an automotive industry standard. No additional coding is necessary, and Rocket experts can help with any additional customizations you may require.

“ *With the help of Rocket, we met the challenges we were facing with minimal risk, because we benefitted from deploying mature and reliable products that have successfully proven their value in our industry sector. We have enhanced the quality of our CAD data exchange considerably, and reduced the need for ‘tracking control’ in the area of data handling, data security, and the workflow between our customers and plants.* ”

*Andreas Willmann, CAD Support, Modine Europe GmbH*





## ► Increase productivity of product design and engineering teams

TRUfusion Enterprise frees your product designers and engineers from manual file-sharing tasks. Automated workflows handle file export/import, along with file checking, translating, encrypting, and logging. You can find, package, and deliver a set of product design assets in a matter of minutes.

With TRUfusion Enterprise, you can streamline the entire product development process, from RFQ to approval of a production-ready design. Automated email notifications help product designers, engineers, and managers always know which files they have sent and to whom, as well as which files they've received.

Collaboration and decision-making across virtual teams happen faster when data gets to the right place, in the right format, using the most appropriate delivery method. TRUfusion Enterprise can eliminate or reduce the need for data stewards or other dedicated support staff or automate an in-place stewardship process to enforce proper safeguards and increase throughput of product design file exchanges.

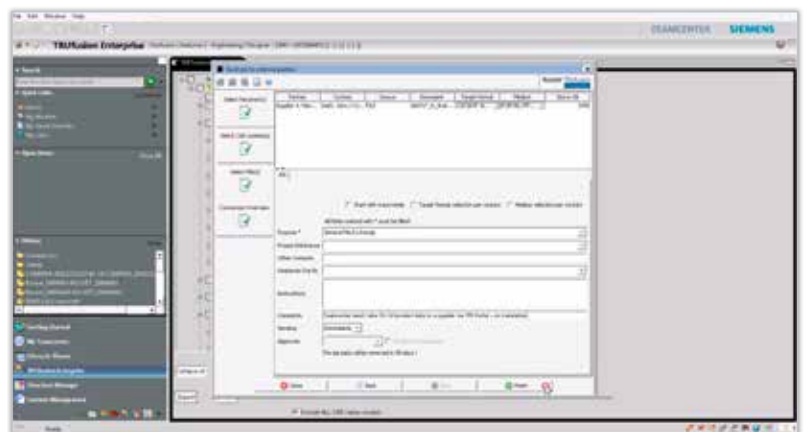
## ► Track high-value IP and simplify compliance with policies and best practices

In a global manufacturing supply chain, it's critically important to prevent product design intellectual property from getting into the wrong hands.

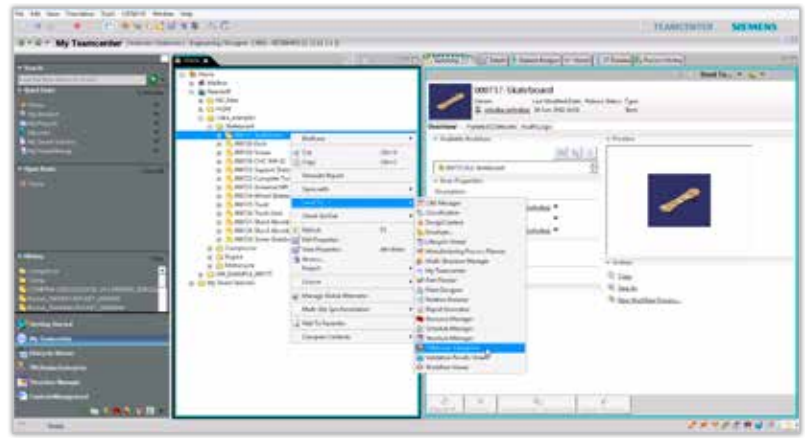
TRUfusion Enterprise helps ensure that your IP goes only where it should and is managed with appropriate attention to data protection policies by all parties. TRUfusion Enterprise monitors and logs every file processing and exchange step automatically, generating a complete audit trail.

By simplifying and enforcing compliance using fully-auditable processes, you can better meet customers' quality, naming, and security mandates. A single globally-deployed process can prevent geographic variances in all key departments, especially those involved in collaborating with your partners. End-to-end tracking and a complete audit trail ensure full non-repudiation, making it impossible for someone to claim that he or she didn't receive a file, or inadvertently worked with out-of-date data.

With TRUfusion Enterprise, sending CAD data safely to your development partners is a snap. Simply choose the parts or assemblies you want to share, then choose the TRUfusion Enterprise integration menu to get started.



Simple workflow automation takes your users through the steps required to ensure the right partners receive only the data they need, in the format they need it. Eliminate the labor-intensive and error-prone manual steps they are performing today, and save minutes (or even hours) of per exchange.



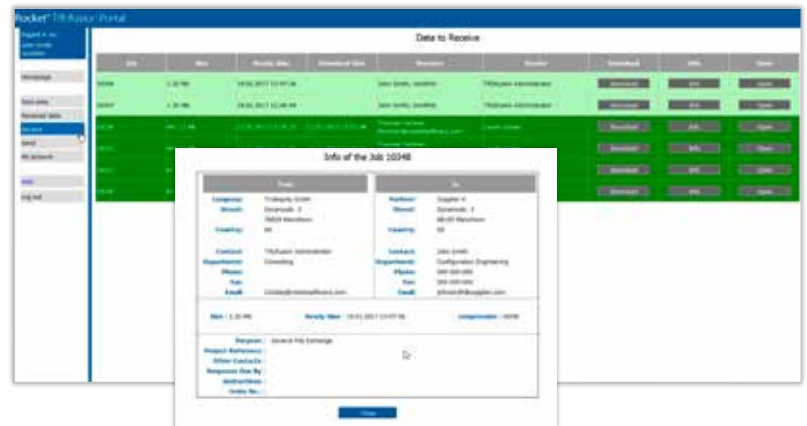
## ▶ Prevent costly mistakes, delays, and false starts

Incomplete, inaccurate, misdirected, or late files can have expensive consequences in product design processes. TRUFusion Enterprise helps prevent errors such as accidentally sending the wrong files or incomplete file packages to suppliers, sending data to the wrong person, or sending an old file revision or file that doesn't meet recipient requirements.

TRUFusion Enterprise provides insight into the status of all product design data exchange workflows—even across highly-distributed, complex product development processes with multiple parties and interdependencies. Senders and receivers know when product data has been delivered and successfully processed by the recipient. Automatic checking of file formats and parameters help product designers and engineers across supply chains be confident that they are sending and receiving the right files, at the expected level of quality.

For companies with multiple OEM customers and extensive supplier networks, TRUFusion Enterprise can significantly reduce the overhead of exchanging product design data via centralized, managed, intelligent processing and routing.

The TRUFusion Enterprise Portal makes it easy for supply chain partners to download the files that have been shared. The files will be sent only to the intended recipients, in the required formats defined for that particular type of data exchange.



## ▶ Supported CAD Systems, PLM Systems, and Standards

Rocket TRUfusion Enterprise supports or integrates with many CAD and PLM standards and systems out of the box, and Rocket monitors and stays in sync with all the latest releases of supported systems. Rocket can help you build efficient file-transfer integrations between different product design authoring and data management software, including in-house-developed software. Out-of-the-box integrations include:

### PLM systems and integration platforms

- CONTACT Software CIM Database
- SAP® PLM
- Siemens Teamcenter®
- T-Systems COMPDM

CAD system translators to enable translations into other formats, including:

- STEP, IGES, DXF, STL, Parasolid and PDF/3D PDF
- Dassault Systèmes CATIA™ v5
- PTC Creo® Parametric™
- Siemens NX™

### Third-party direct CAD-to-CAD translators

- CoreTechnologie 3D\_Evolution
- Elysium ASFALIS
- Theorem Solutions CADverter
- Theorem Solutions Publish 3D
- T-Systems COM/FOX

### CAD quality checkers

- Heidelberg CAx Quality Manager (HQM)
- TechniaTranscat LiteComply
- TechniaTranscat Q-Checker

### Secure File Exchange Capabilities

- OFTP V1 and 2 plus ENGDAT and ENGPART
- TRUfusion Enterprise Portal, for on-premises capability
- TRUexchange, for SaaS/cloud capability



-  [rocketsoftware.com](http://rocketsoftware.com)
-  [info@rocketsoftware.com](mailto:info@rocketsoftware.com)
-  US: 1 855 577 4323
-  EMEA: 0800 520 0439
-  APAC: 612 9412 5400
-  [twitter.com/rocket](https://twitter.com/rocket)
-  [www.linkedin.com/company/rocket-software](https://www.linkedin.com/company/rocket-software)
-  [www.facebook.com/RocketSoftwareInc](https://www.facebook.com/RocketSoftwareInc)
-  [blog.rocketsoftware.com](http://blog.rocketsoftware.com)