



DATASHEET

# Rocket® TRUfusion™ Enterprise Teamcenter Integration

Improve Competitiveness and Reduce Risk with PDX/PLM Integration

## Product Benefits

- Standardize and secure CAD and other product data exchange from Teamcenter
- Boost engineering productivity by reducing data-exchange time by 90% or more
- Improve product quality and minimize mistakes
- Lower your TCO over in-house or competitive solutions

While many organizations have invested in automated product lifecycle management (PLM) solutions like Siemens Teamcenter®, their approach to sharing product data often remains manual. This is inefficient, ripe for error, and risky on multiple levels. Rocket® TRUfusion™ Enterprise and Teamcenter can combine to create an accurate, secure, and efficient way to exchange sensitive product data with customers and partners. Engineering teams can stop wasting precious hours on manual exchanges, freeing up their time and talent for developing new IP. With TRUfusion Enterprise costly, disruptive mistakes—like sending the wrong files to the wrong people in the wrong formats—become a thing of the past. And with fewer human errors in the mix, you can reduce the risk to your IP and the competitive differentiation and revenue it provides, as well as your potential for legal exposure.



[www.rocketsoftware.com](http://www.rocketsoftware.com)




## ▶ Standardize and secure CAD and other product data exchange from Teamcenter

Rocket TRUfusion Enterprise and Teamcenter work together out of the box to provide secure, end-to-end product data exchange with customers, partners and remote sites. TRUfusion Enterprise uses Teamcenter role and access configurations to secure your IP during the exchange workflow and extends that security into the product data exchange (PDX) process. The resulting solution meets the specific technical requirements on both sides of every PDX transaction. It imports/exports data into Teamcenter and maps attributes and naming conventions between CAD and PLM systems to convert between different data models, with the ability to enforce compliance with OEM/Tier 1 mandates in industries such as automotive, transportation, and aerospace. With the combined security of Teamcenter and TRUfusion Enterprise, you can collaborate and exchange sensitive data—whether yours or your customers’—with confidence, every time.

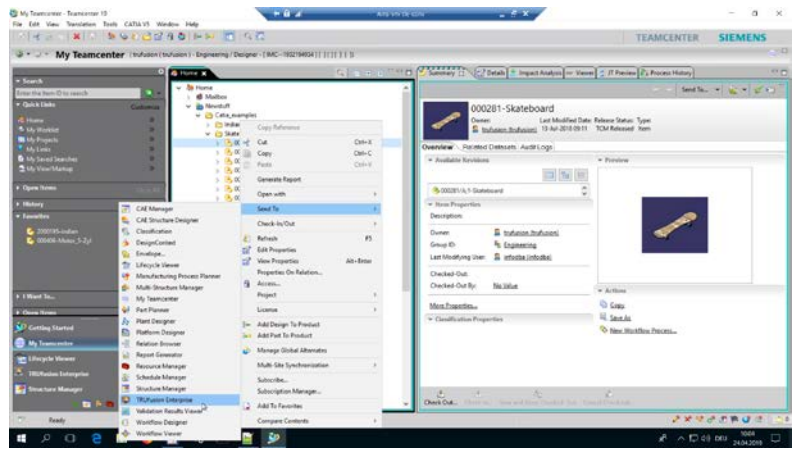
## ▶ Boost engineering productivity by reducing data-exchange time by 90% or more

With this integrated solution, manufacturers can save thousands of man-hours per year through more efficient data exchange. They’ll also accrue dividends far into the future by extending PLM discipline to PDX collaboration and coordination. TRUfusion Enterprise automates and documents the entire PDX process, archives sent data packages, and even provides a full audit trail. With a “single source of truth” for product data exchange, everyone across the supply chain is more productive and in sync.

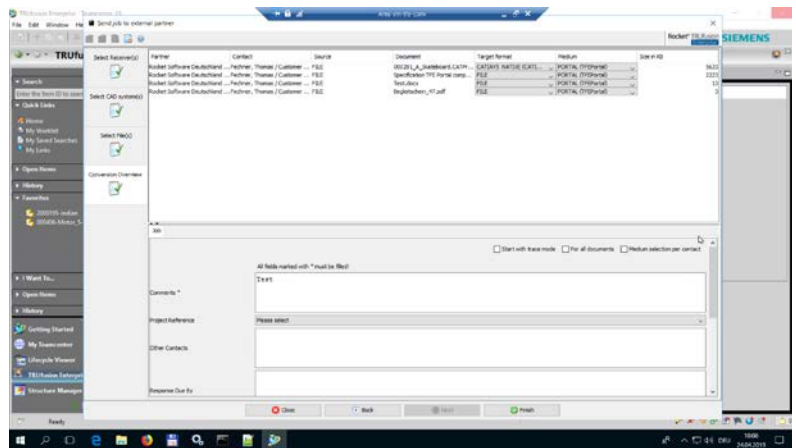


*Using Rocket TRUfusion Enterprise, a \$29 billion Tier 1 automotive supplier saw a 95% reduction in the man-hours needed for data exchange by standardizing and automating the process across its internal sites worldwide.*

By automating labor-intensive and error-prone manual steps, many manufacturers save thousands of hours per year.



It's easy to send CAD data and related documents safely and securely to your development partners from Teamcenter with TRUFusion Enterprise.



## ▶ Key Capabilities

TRUFusion Enterprise allows engineers to save time by automating the standard product data exchange process, including renaming, quality checks, translations, encryptions, compression/decompression, physical transfer and archiving. With a Teamcenter integration, engineers can also:

### Export

- Better manage sensitive data through multi-level controls for item revisions, owners, project environments, and object status
- Select CAD data and other relevant documents within Teamcenter and outside the PLM environment and customize what is included in the export, as needed per job (e.g., NX, CATIA v5, JT, STEP, Microsoft Office)
- Record job information into Teamcenter for reporting purposes

### Import

- Check for the delta between what is in Teamcenter and the newly received data
- Reconcile between new data and what is already in Teamcenter by choosing what data to import and whether it replaces what is in Teamcenter or creates a new version
- Record job information into Teamcenter for reporting purposes





## ► Supported CAD Systems, PLM Systems, and Standards

Rocket TRUfusion Enterprise supports or integrates with many CAD and PLM standards and systems out of the box, and Rocket monitors and stays in sync with all the latest releases of supported systems. Rocket can help you build efficient file-transfer integrations between different product design authoring and data management software, including in-house-developed software. Out-of-the-box integrations include:

### PLM systems and integration platforms

- CONTACT Software CIM Database PLM
- SAP® PLM
- Siemens Teamcenter®
- T-Systems COMPDM
- Dassault Systèmes 3DEXPERIENCE® platform (ENOVIA)
- Aras Innovator®
- PTC Windchill®

CAD system translators to enable translations into other formats, including:

- STEP, IGES, DXF, STL, JT, Parasolid and PDF/3DPDF
- Dassault Systèmes CATIA™ v5
- PTC Creo® Parametric™
- Siemens NX™

### Third-party direct CAD-to-CAD translators

- CoreTechnologie 3D\_Evolution
- Elysium ASFALIS
- Theorem Solutions CADverter
- Theorem Solutions Publish 3D
- T-Systems COM/FOX

### CAD quality checkers

- Heidelberg® CAx Quality Manager (HQM)
- TechniaTranscat LiteComply
- Technia Q-CheckerSecure File Exchange Capabilities
- OFTP V1 and 2 plus ENGDAT and ENGPART
- TRUfusion Enterprise Portal, for on-premises capability
- TRUexchange, for SaaS/cloud capability



-  [rocketsoftware.com](http://rocketsoftware.com)
-  [info@rocketsoftware.com](mailto:info@rocketsoftware.com)
-  US: 1 877 577 4323  
EMEA: 0800 520 0439  
APAC: 1800 823 405
-  [twitter.com/rocket](https://twitter.com/rocket)
-  [www.linkedin.com/company/rocket-software](https://www.linkedin.com/company/rocket-software)
-  [www.facebook.com/RocketSoftwareInc](https://www.facebook.com/RocketSoftwareInc)
-  [blog.rocketsoftware.com](http://blog.rocketsoftware.com)