



DATASHEET

# Rocket<sup>®</sup> Servergraph<sup>®</sup> for IBM i<sup>®</sup>

Gain storage and data protection insights across your IBM i environment

- Quickly identify and resolve backup problems with automated alerts
- Deliver the right information to the right people at the right time
- Simplify audit preparation and ensure compliance with regulations and internal SLAs
- Extend business continuity for IBM i environments

IBM i environments are becoming more complex, and administrators often have to manage multiple systems, locations, and backup devices. It can be hard to understand exactly what's happening across the whole environment. Daily status reporting can be time consuming, and compliance reporting can take days or weeks. Administrators need tools to help expand insight, including automating backup and reporting processes.

Rocket<sup>®</sup> Servergraph<sup>®</sup> proactively monitors and reports on the entire IBM i environment, providing a real-time, comprehensive view that helps IT staff better manage data protection processes, costs, and risks. Servergraph also simplifies audit preparation and compliance reporting, while enabling custom reporting by business unit, geography, application and more. It's the industry's only solution that supports both BRMS and IBM i, going beyond command-line log analysis to provide visibility into the entire environment, including storage capacity, storage performance, and backup statuses.



[www.rocketsoftware.com](http://www.rocketsoftware.com)



## ▶ Quickly identify and resolve problems with automated alerts via a single view

Servergraph gives you an integrated view of all BRMS and IBM i implementations, letting you monitor and report on all backup operations and storage devices. It provides visibility into all heterogeneous components from a single view, so you can easily identify problems anywhere in your environment and troubleshoot and resolve issues more quickly. Configurable dashboards help administrators spot trends and make better-informed decisions. When problems arise, Servergraph generates, prioritizes, and issues real-time alerts to staff so they can address situations before they disrupt business or jeopardize compliance. Team members can get out of reactive mode and reallocate their time to more strategic initiatives.

Servergraph is agentless, so it connects to each BRMS and IBM i instance and quickly collects necessary data without adding overhead.

## ▶ Deliver the right information to the right people at the right time

Servergraph dashboards combine data from your IBM i environment with data from more than 30 other backup and storage platforms and applications. Standard views of backup history, storage capacity, and storage performance help you gain immediate visibility into the health of your environment.

You can filter views, and it's easy to create custom dashboards based on predefined ones or from scratch, to address any subset of monitored machines in specific views, and it's easy to create custom dashboards based on predefined ones or from scratch, to address management questions. Reports can be delivered as custom dashboards or scheduled for automatic email delivery.

By combining trending and capacity utilization details, Servergraph helps you better plan for future purchases. End-user consumption reports help automate billing and chargeback, and can support separate billing rates by capacity, media type, storage location, or quota levels. Cloud deployment options give you the freedom to centrally manage a distributed backup environment with small remote backup footprints. To feed trending and forecasting reports, Servergraph retains BRMS and IBM i data as long as you need; ideal for audit requirements that call for data retention beyond 30 days.

## ▶ Simplify audit preparation and ensure compliance with regulations and internal SLAs

IBM i environments can include multiple toolsets, schedulers, and storage devices. It can be difficult to meet governance and compliance requirements with heterogeneous environments, and many companies struggle to produce meaningful end-to-end reports that cover all their systems.

Servergraph streamlines audit and compliance preparation. Its ability to generate custom dashboards and address specific governance and compliance needs ranging from HIPAA, Sarbanes-Oxley, Trust Services, and Basel III fills gaps other solutions can't, providing a complete audit trail of IBM i /BRMS activities and processes. The software is also ideal for preparing reports that show compliance with internal policies and SLAs, allowing IT staff to focus on running the business rather than spending time capturing data.

Instantly identify trouble spots with color-coded outputs, then drill down into the data for further analysis and troubleshooting.

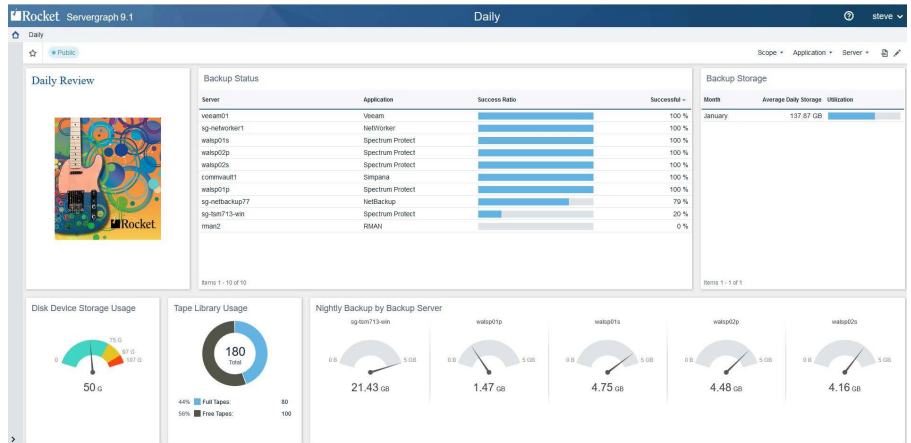


Figure 1: Customized Alerts Dashboard

Utilization and trending dashboards are invaluable for budget and capacity planning. Administrators can easily understand which storage resources are reaching capacity limits, monitor changes over time, and identify any recent spikes.

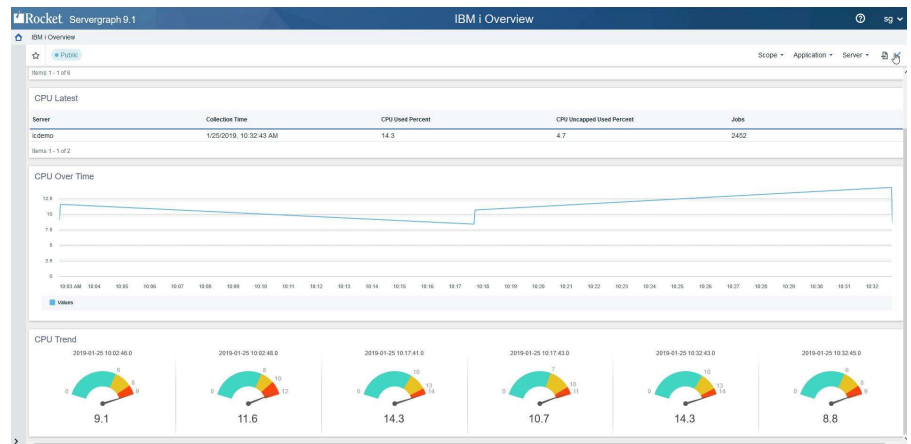


Figure 2: Disk Utilization and Trending Dashboard

When paired with Rocket iCluster®, a high availability/disaster recovery (HA/DR) solution for IBM i, Servergraph provides a complete business continuity solution for IBM i customers. Administrators can easily monitor the health of the HA environment while simultaneously monitoring the status of backup operations.

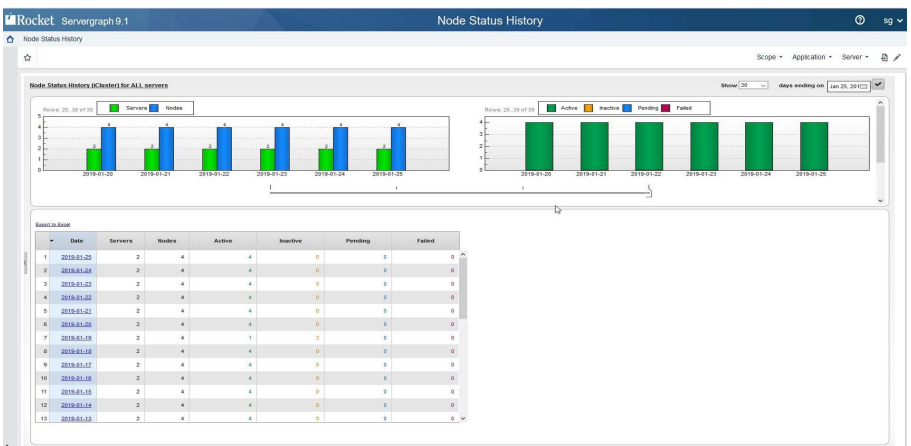


Figure 3: Rocket iCluster Replication Dashboard



```
mirror_mod.use_y = True
mirror_mod.use_z = False
elif operation == "MIRROR_Z":
mirror_mod.use_x = False
mirror_mod.use_y = False
mirror_mod.use_z = True
```

“ Before, it was virtually impossible for my team to get answers to critical questions. Servergraph is very strong at quickly answering these questions. We are also able to deliver the intricate reporting the downstream owners of the research systems need—without anyone spending hours doing manual work.”

Martin Campbell, Unix & Virtualization Team Lead, The University of Edinburgh

Rocket Servergraph for IBM i belongs to a family of Rocket solutions that maximize IBM i investments. In addition to helping IT departments monitor and report on storage environments, Rocket IBM i modernization solutions include:

- Rocket® Lifecycle Manager, which helps you manage and automate DevOps for all of your platforms including IBM i, Windows, web, and mobile.
- Rocket® API, which connects and integrates enterprise applications with web and mobile platforms.
- Rocket® LegaSuite, a modernization solution for green-screen applications that reduces the time, expense, and risk associated with recoding or replacing
- Rocket® iCluster, which significantly reduces the amount of time a business is able to resume normal operations following an unexpected IBM i business system interruption



## ► Tech specs

### Server specification

- AIX 6.1, 7.1 (must install on Large-File-Enabled file system)
- Red Hat Enterprise Linux 5, 6 (64-bit), 7(64-bit)
- SELinux supported
- SUSE Linux Enterprise Server 11, 12
- CentOS 6

### Client specification

- Microsoft IE 10 or later
- Mozilla Firefox 3.5 or later
- Google Chrome 17 or later
- JRE plugin (for admin consoles)

### Enterprise integration points

- AIX 6.1, 7.1 (must install on Large-File-Enabled file system)
- Red Hat Enterprise Linux 5, 6 (64-bit), 7(64-bit)
- SELinux supported

### Supported applications and devices

#### Data protection applications

- Commvault
- Dell EMC Avamar
- Dell EMC NetWorker
- BM i Backup and Recovery Media Services (BRMS)
- IBM Spectrum Protect
- IBM Spectrum Protect Plus
- Microsoft SQL Server
- Oracle Recovery Manager (RMAN)
- Rocket iCluster HA Assist
- Rubrik Cloud Data Management
- Spectrum Snapshot
- VeeAM
- Veritas Backup Exec
- Veritas NetBackup

#### Deduplication Devices

- Cobalt Iron ADP Accelerators
- Dell EMC Data Domain, Data Domain Boost
- ExaGrid
- FalconStor Software
- Hitachi Protection Platform
- IBM ProtecTIER
- Quantum DXi

### Storage Devices

- Dell EMC Isilon
- Hewlett Packard Enterprise 3PAR
- Huawei OceanStor
- IBM DS Storage, Spectrum Scale, Storwize, Elastic Storage, TS Storage TS3310
- NetApp

### Workload automation

- BMC Software Control-M
- CA Workload Automation AE (AutoSys)
- IBM Workload Scheduler
- OpCon

### OS Monitoring

- Hyper-V
- UNIX
- VMware
- Cloud
- Amazon S3
- Microsoft Azure



 [rocketsoftware.com](http://rocketsoftware.com)

 [info@rocketsoftware.com](mailto:info@rocketsoftware.com)

 US: 1 855 577 4323

EMEA: 0800 520 0439

APAC: 612 9412 5400

 [twitter.com/rocket](https://twitter.com/rocket)

 [www.linkedin.com/company/rocket-software](https://www.linkedin.com/company/rocket-software)

 [www.facebook.com/RocketSoftwareInc](https://www.facebook.com/RocketSoftwareInc)

 [blog.rocketsoftware.com](http://blog.rocketsoftware.com)