



# Rocket® CorVu CorRisk

Align financial exposures, business operations and risk management plans with business strategy

Provide visibility into risk scenarios, KRIs, accountability and cause-and-effect risk drivers through personalized dashboards, risk maps and exception reporting

Analyze the potential financial impact of risk scenarios with predictive forecasting and causal modeling

Measure inherent and residual risk before and after risk controls, to monitor the effectiveness of risk controls and actions taken over time

## Monitor and Mitigate Risks Throughout the Enterprise

Risk management methodologies have been widely used by many enterprises for decades. However, with increasing regulatory pressures (e.g. Sarbanes-Oxley and Basel III) and increasing governance obligations, many corporate leaders are looking to manage risk more effectively.

CorRisk is a purpose-built enterprise risk management application that can be deployed rapidly to proactively mitigate risks. Risk management activities throughout the organization can be monitored and essential workflows can be automated.

Stakeholders can be alerted to potential threats, and risk management obligations can be fulfilled.

Many companies are actively pursuing risk management approaches that extend beyond mere compliance, but which enable them to proactively improve business performance.

CorRisk can provide a risk management framework that can monitor and manage the threats and obstacles to achieving business strategy.

## Key Benefits

- ❖ Improve operational efficiency
- ❖ Monitor and manage potential risk
- ❖ Anticipate financial impact of risk
- ❖ Monitor mitigation strategies

## Key Features

### Enterprise Risk Management

- ❖ Purpose-built Enterprise Risk Management framework
- ❖ Monitor credit, regulatory, and operational risk
- ❖ Monitor risks related to strategic objectives, business plans, key business drivers, and risk clusters
- ❖ Tie KRIs to risks and desired outcomes
- ❖ Support for various risk management frameworks

- ❖ Historical repository of loss events/incidents and near misses
- ❖ Multiple risk scenarios per objective
- ❖ Escalations and alerts for unacceptable compliance risk and process failures
- ❖ Alerts drive treatment plans
- ❖ Simple entry of “soft” measures
- ❖ Monitor impact, probability, control effectiveness, alignment, and tolerance

### Data Collection, Consolidation, and Security

- ❖ Periodic risk data can be automatically loaded from other corporate information systems, submitted via email, or manually entered via web forms
- ❖ Automated data collection from virtually any source
- ❖ Reminders, escalations, and exception reports for data that is not yet available

- ❖ Security profiles that limit access to appropriate data only

### Accountability

- ❖ Every object is owned/maintained by a specified individual
- ❖ All risk information is controlled in a secure, integrated environment which can be fully audited

## Key Features

### Analytics

- ❖ Predictive forecasting and causal modeling for analyzing potential financial impact of risk
- ❖ Analyze accountability by owner
- ❖ Drill-down from risk maps to understand why control failures occur

### Risk Reports

- ❖ Develop risk reports for monitoring and managing risk by process, company, business unit, business driver, and objectives
- ❖ Develop control reports to keep managers up-to-date on all risk control strategies and their subordinate tasks
- ❖ Develop personalized dashboards, risk maps and enterprise reporting
- ❖ All reports utilize simple web delivery

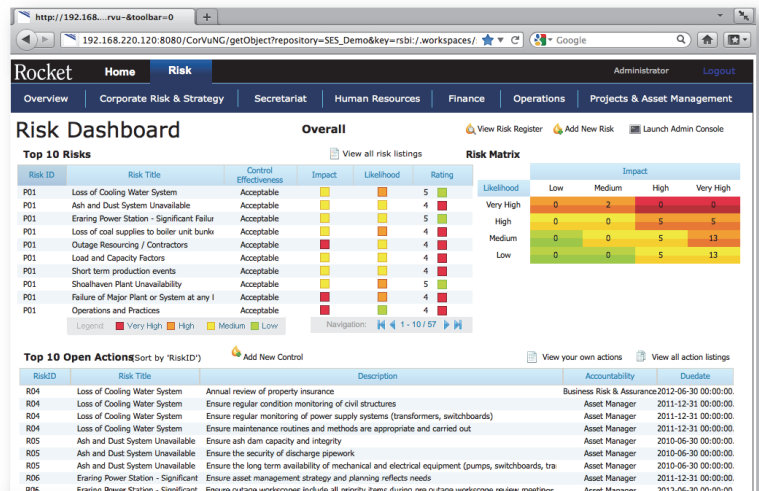
### Communication and Collaboration

- ❖ Secure and consistent electronic communication for all risk-related content throughout the organization
- ❖ Commentary on KRIs, risk scenarios, risk controls, and actions shared with relevant stakeholders
- ❖ Risk-related knowledge is developed as decisions and actions, and plans are recorded and communicated

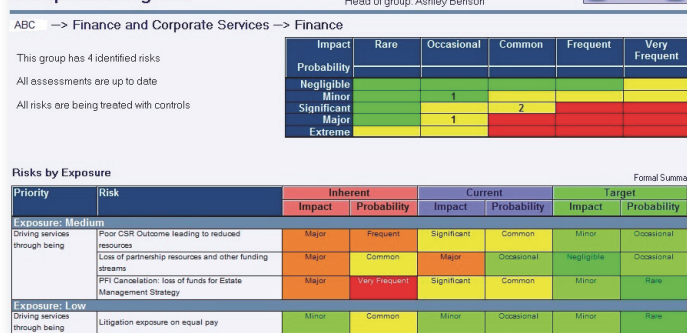
## Why CorRisk?

### Comprehensive Capabilities

- ❖ Loss events/incidents



### Group Risk Register



- ❖ Risk profile reports
- ❖ Forecasting and modeling
- ❖ Risk management linked to strategy execution
- ❖ Sophisticated role-based security with LDAP support
- ❖ Ability to populate risk data from corporate information systems

### Flexibility

- ❖ Easy to change/add risks, KRIs, reports, organization structures, and processes
- ❖ Personalized dashboards, reports, and risk maps

### Low Total Cost of Ownership

- ❖ Purpose-built application to minimize implementation, training, modification, and maintenance costs
- ❖ Easy to install, administer, and update via the web
- ❖ Easy configuration with no programming required
- ❖ Pre-built integration to common ERP systems

- [www.rocketsoftware.com](http://www.rocketsoftware.com)
- [info@rocketsoftware.com](mailto:info@rocketsoftware.com)
- [twitter.com/rocket](https://twitter.com/rocket)
- [www.youtube.com/rocketsource](https://www.youtube.com/rocketsource)
- [www.linkedin.com/company/rocket-software](https://www.linkedin.com/company/rocket-software)
- [plus.google.com/u/0/104109093105646534918](https://plus.google.com/u/0/104109093105646534918)

