



# Rocket® ChangeMan® ZMF

(formerly a Micro Focus® product)



The most comprehensive and fully integrated solution for software change, configuration, and release management on z/OS®.

## Product highlights

### Confidently develop and deploy mainframe apps faster

Rocket® ChangeMan® ZMF\* protects corporate assets and lets developers get more done in less time. It is a comprehensive system that provides reliable and streamlined implementation of software changes in a z/OS environment. It manages and automates the process of migrating software changes from a development environment through any test environments and into production. A comprehensive interface available through Rocket® Eclipse\* or TSO/ISPF guides developers through various change management processes.

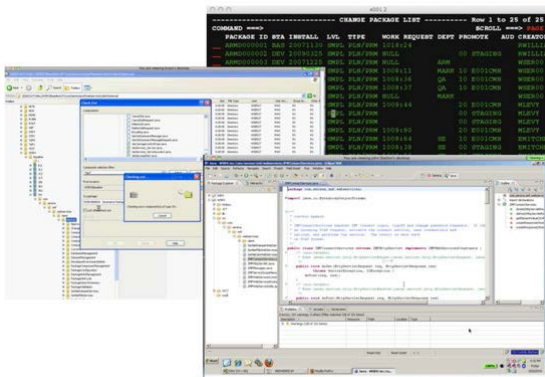


Figure 1. Rocket ChangeMan ZMF Client Interfaces

Rocket ChangeMan ZMF manages every code change. It guarantees source-to-load integrity and ensures that only successfully tested programs make it into production. Rocket ChangeMan ZMF reduces maintenance costs and regression errors by moving code through an automated lifecycle with strict accountability and quality assurance at every step. It can integrate scheduling forms and approval processes online. It can support developer communication and perform regression analyses as part of the most thorough concurrent development available.

## Quick view

**Impact analysis** — Assess the ramifications of a change before it hits production.

**Version control** — Manage any number of component versions.

**Package audit** — Ensure that all artifacts are up to date and prevent back leveled code from getting deployed.

**Online approvals** — use email, web or mobile clients for fast and secure approvals in parallel, serial, or both.

**Concurrent development** — Eliminate overlays and cultivate developer communications.

**Freeze control** — Ensure that the changes tested are the ones put into production.

**Automated backout** — Revert to earlier code in seconds.

## Advantages



### Reliability

Development conflicts are discovered and resolved early.



### Integrity

Package-driven architecture maintains source to load integrity.



### Flexibility

Highly configurable to meet environment and process requirements.



### Extensibility

Nonproprietary infrastructure and industry standard REST APIs.



### Recoverability

Full, safe backouts.

## Benefits

### Handle your software with care: for its entire lifecycle

Rocket ChangeMan ZMF supports your process of moving changes through an organization, and it treats change management as a business issue rather than a technical requirement. It eliminates missing source code problems. It employs Change Packages that enhance developer creativity while establishing consistency and improving management reporting. It increases system availability and can simplify software audits.

The change package architecture delivers unparalleled efficiency and management control. Rocket ChangeMan ZMF groups all components of a change together at the beginning, protecting the integrity of the entire change throughout the software lifecycle. A change package may contain up to thousands of components, and developers can act on entire groups of components with a single package command.

## Quick view

**Emergency protocols** — Protect the integrity of the system while allowing quick fixes.

**Automation** — Automate Websphere, CICS®, IMS™, and Db2® deployments.

**Open architecture** — Support for REST APIs, Java, XML, Web Services, and standard security environments.

**GIT integration support** — using the GIT Connector VS Code plugin for editing.

**REST APIs and ZOWE CLI plugin** — Support and integration within the DevOps toolchain

## Benefits

Protects software assets.

Automates development process.

Simplifies audit compliance.

Prevents overlays and regression.

Enforces quality assurance measures.

Provides comprehensive build and release management.

REST APIs ensure ZMF can participate fully in new agile development pipelines.

Minimizes risk of Production failures.

Guarantees integrity in the application development cycle.

## The mainframe is not an island

Rocket® ChangeMan ZMF is built from the ground up to be open and scale from the smallest to the largest enterprise architectures. You don't need to know mainframe to work with Rocket ChangeMan ZMF. Developers have a choice of user interfaces, including traditional ISPF, Windows and Eclipsed based IDEs such as Rocket® Enterprise Developer\* which provides access to the functionality of ZMF without leaving the development environment. Rocket ChangeMan ZMF also includes REST Services, .NET, XML, and Web Services along with many user exits to provide open, easy, and secure access to your software artifacts from other tools and processes.

You can also build and deploy modern applications on z/OS as Rocket ChangeMan ZMF supports Java and zFS out of the box as well as services built using IBM® z/OS Connect. So whether you are supporting your 20 year old legacy applications or managing modern workloads, Rocket ChangeMan ZMF delivers rock solid results.

## Web Services Message Flow

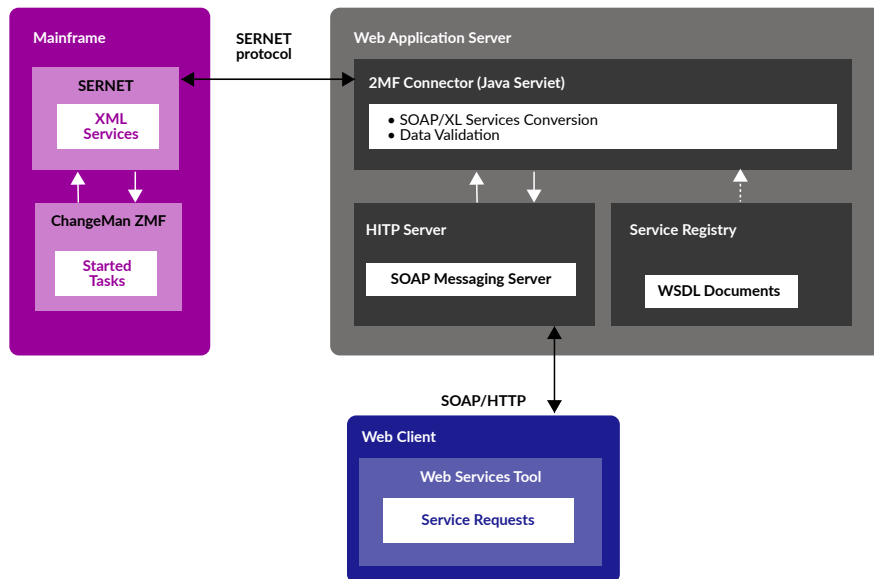


Figure 2. Rocket ChangeMan ZMF Web Services Message Flow

\*Formerly Micro Focus® products

## System requirements

For full details of system compatibility please check the [Support Line](#).



Modernization. Without Disruption.™

Visit [RocketSoftware.com](https://RocketSoftware.com) >

© Rocket Software, Inc. or its affiliates 2024. All rights reserved. Rocket and the Rocket Software logos are registered trademarks of Rocket Software, Inc. Other product and service names might be trademarks of Rocket Software or its affiliates.

Micro Focus® is a registered trademark of Micro Focus IP Development Ltd. Rocket Software is not affiliated with Micro Focus IP Development Ltd.

IBM®, CICS®, z/OS®, and Db2® are trademarks of International Business Machines Corporation, registered in many jurisdictions worldwide.

MAR-10935\_DS\_ChangeManZMF\_V4

Learn more

