



Rocket® U2 Web Development Environment

Ready for business anytime, anywhere.

Presents U2 data and business logic as objects

Enables access from popular web frameworks, such as .NET and Java

Scales to handle activity peaks

Secures data through encryption and integrates with database high-availability functions

Speaks the language of the business

Ensures business continuity

Extend Your Reach

You need to connect with your customers wherever they are—at their desks, on their phones or on the road. In retail sales, banking, transportation, package delivery services and more, your Rocket U2 business solution touches people everywhere. Rocket Software's U2 Web Development Environment (U2 Web DE) delivers your solution across the web—when and where it is needed.

Build Once, Connect Many

U2 Web DE is a tool to abstract your data and business logic in server-side objects that follow industry standards for use in web and mobile applications. It ensures maximum business uptime and eliminates interruptions to business operations, and if you need to change your interface, you can simply reuse existing objects.

Divide and Conquer

Let your U2 developers focus on what they know best: understanding your data architecture, selecting the right properties to expose, and defining key methods. Allow expert web developers to pick their favorite interfaces, such as Java or .NET, to build the web front-end leveraging this object architecture. Collaborative development uses the right experts for the right job.

Scale the Heights

Make sure your web application can handle variable loads and sudden surges. U2 Web DE supports either webshares or connection pooling to share on-demand access to the database for application scalability. Assign minimum and maximum connections to balance your resources and tune your responsiveness. You never know when your popularity will increase!

Peace of Mind

Your web solution must be secure and available, so don't let the need for database maintenance slow you down. U2 Web DE allows for database pause/resume and the ability to restart accounts to eliminate interruptions and prevent loss of web requests. Use Secure Socket Layer (SSL) encryption of data in flight and Automatic Data Encryption (ADE) to secure data at rest. You can rest easy and fly high knowing that your web data is secure.

Span the Globe

When your business takes you around the world, you need to speak the lingo. Full foreign language support using UniVerse National Language Support (NLS) and UniData I18N allows your web application to run in the language of your customer. Localizing screen prompts and displaying geographically correct date and currency formats make international business seamless.

Product Requirements

U2 Web Development Environment contains four key components: U2 Web Designer, RedBack Object Server, a Scheduler and RedBeans/RedPages.NET Client APIs. Product requirements and recommendations are listed below. For more information, see the Product Availability Matrix at rocketsoftware.com/u2/support.

U2 Web Designer

U2 Web Designer is an Eclipse-based tool that provides a complete environment to create and maintain RBOs, standard objects that encapsulate your business logic for use in your web applications. The designer is certified for the following platform levels:

- ❖ Microsoft Windows 7, 8, 8.1 and Server 2012

RedBack Object Server

RedBack Object Server resides on the same machine as UniData or UniVerse. Recommended versions follow:

- ❖ UniData 8.1
- ❖ UniVerse 11.2.3

Scheduler

For the Scheduler, the following version is recommended:

- ❖ Java Runtime Environment (JRE) 7 or later

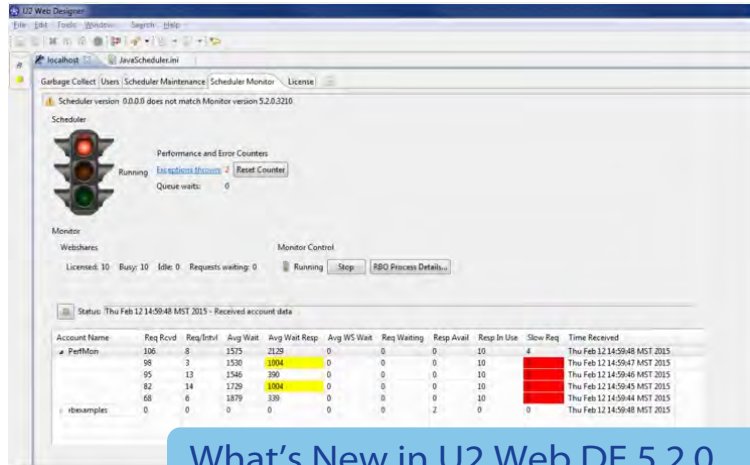
RedBeans/ RedPages.NET Client APIs

For .NET applications (RedPages.NET) the following versions are recommended:

- ❖ Microsoft Internet Information Services (IIS) 6x or later
- ❖ Microsoft .NET Framework 2.0 or later

For Java applications (RedBeans), the following versions are recommended:

- ❖ Java Runtime Environment (JRE) 7 or later



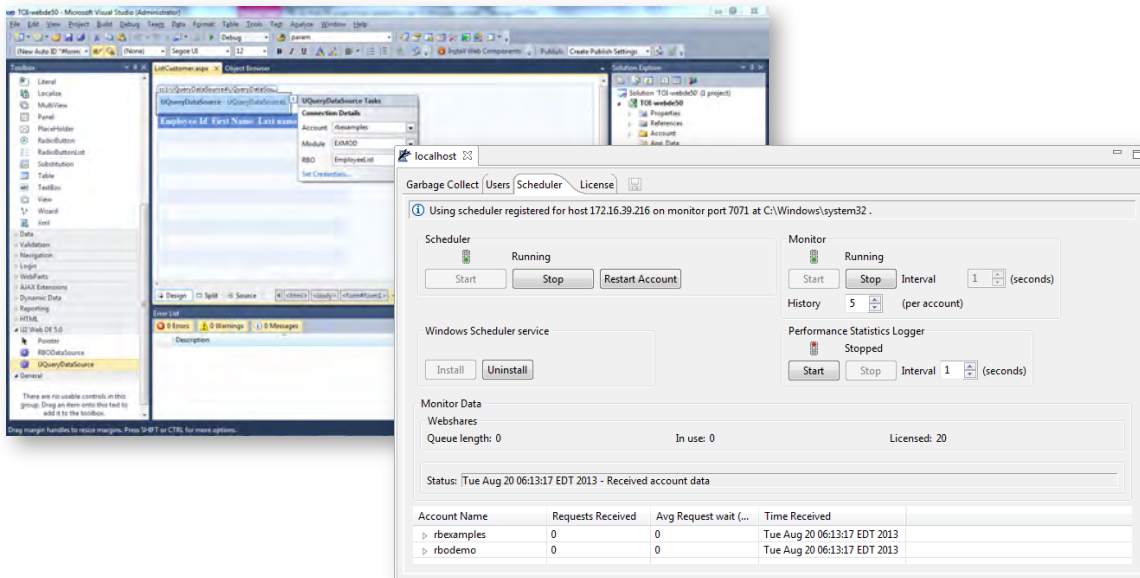
What's New in U2 Web DE 5.2.0

Take advantage of these features by upgrading today!

Monitoring – Keep an eye on your web site responsiveness via traffic light indicators, troubleshoot when faced with high demand, and identify areas to improve or adjust license consumption.

Logging Improvements – Quickly identify slow processes, keep track of the distribution of requests across database licenses, and see any database or basic errors that may have occurred. Logs can be set to gather statistics on an adjustable timed basis and can be turned on or off without restarting the scheduler.

RESTful Services – Expose your existing web logic and reuse your existing U2 Web DE RBOs in other applications and processes via RESTful services.



- www.rocketsoftware.com
- info@rocketsoftware.com
- twitter.com/rocket
- www.youtube.com/rocketsource
- www.linkedin.com/company/rocket-software
- plus.google.com/u/0/104109093105646534918

