

ASG-TMON® FOR MQ SOLUTION SUITE

Monitoring and Management of IBM MQ

OVERVIEW

The ASG MQ Solution Suite, which is composed of ASG-TMON® for MQ (ASG-TMON MQ) and ASG-TMON for MQ Enterprise Edition (ASG-TMON MQEE), provides a cross-platform integrated solution for the configuration, management, operation, and performance monitoring tools necessary to manage IBM's MQ.

MANAGE YOUR MQ NETWORK PERFORMANCE

ASG-TMON MQ for z/OS provides configuration management, queue administration, exception processing, and performance monitoring for local and remote MQ environments.

ASG-TMON MQ is a component of the ASG-TMON suite of products for z/OS. With a fully functional 3270 user interface, ASG-TMON MQ is easy to use and understand, and allows MQ novices to quickly become experts. Features such as online historical and batch reporting, automatic dead letter queue processing, and color-coded exception alerting make it a powerful MQ management tool and an excellent complement to ASG-TMON MQEE for distributed platforms.

ASG-TMON MQEE is built on a multi-tiered architecture, which allows it to be as flexible as your MQ environment. Utilizing Brokers, Agents, and Clients, ASG-TMON MQEE manages outside of the MQ channels. This allows for recovery of MQ queue managers and associated objects and does not compete for bandwidth in the same MQ channel as your mission-critical messages.

```

Jobname: NASTMQ      Message Details      DATE: 10/25
QMGr : M7AE          TIME: 14:22:51
Command:             Cycle: MMSS

Queue Name: SYSTEM.DURABLE.SUBSCRIBER.QUEUE
Description Store of information about durable subscribers
Msg Data : Mu..NOTS.....CSQMM7AE DEFAULT.....
+-----+-----+-----+-----+-----+-----+
| PUT Time (GMT) : | Report Option: 00000000 |
| PUT Date :      | Feedback Code: 0       |
| Message Type :  | Message ID : CSQ M7AE  |
| Format : MQSTR   | Correl ID : CSQMM7AE  |
| Persistent : YES | Userid :               |
| Expiry Time :   | ACCT Token :           |
| Msg Length : 702 | APPL ID Data :         |
| Priority : 9     | APPL Origin Data :     |
| Backout Count: 0 | PUT APPL Type: UNKNOWN |
| Data Encoding: 785 | PUT APPL Name:        |
| CodeCharSetID: 500 | MDEX                  |
| Reply-To Queue : |                         |
| Reply-To QMGR :  | M7AE                  |
| Remote Queue (XMITQ) : ***** NO XMITQ HEADER *****
| Remote QMGR (XMITQ) : |                         |
+-----+-----+-----+-----+-----+
HELP INFORMATION = PF1      NASTMQ      PF KEY ASSIGNMENTS = PA1
  
```

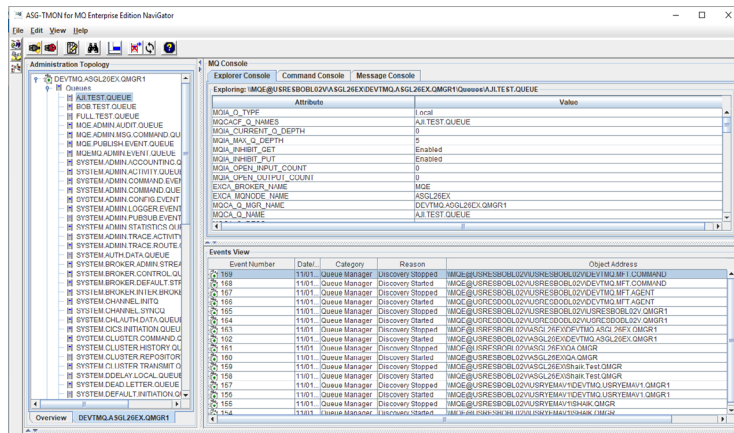
TMON MQ can highlight all the details and current settings of each message

BENEFITS

- Collects and analyzes MQ performance data
- Monitors all aspects of an MQ environment
- Prevents problems that threaten the availability and performance of MQ
- Identifies and displays problems in each monitored queue manager
- Ensures achievement of performance goals by monitoring each channel
- Monitors all queues and provides immediate updates when queue depth thresholds are exceeded
- Manages messages with browse, re-queue, and delete functions
- Identifies and resolves complex performance problems through buffer pool data, log, and message management
- Prevents potential problems by monitoring page set activity
- Provides a flexible exception definition facility that allows user-defined criteria
- Provides information about CPU utilization and the number of PUT and GET requests by connection or thread
- Lets you define and alter attributes for all currently connected queue manager objects from one screen

ASG-TMON MQEE Agents are available for the MQ platforms noted. ASG-TMON MQ serves as the ASG-TMON MQEE Agent for z/OS. ASG-TMON MQEE provides a view of your MQ environment through a Java client its NaviGator Java client or web browser.

ASG-TMON MQEE features a flexible exception facility, LDAP support, and robust security for access control. The NaviGator allows you to sort and customize displays as well as save preferences and customizations.



TMON for MQ Enterprise provides a consolidated view of mainframe and distributed queue managers

Jobname: NASTMQ		Message Activity		DATE: 10/25	
QMGr : M7AE				TIME: 14:26:29	
Command:				Cycle: MMSS	
				_ConMA	
Lines: 1 to 8 of 8		FA=Y		Sort Col: NS Seq: A	
		Interval: 11.29.21		Session: 263.9H	
MQI Services		Interval	Interval	Session	Session
		Counts	Rate/Sec	Counts	Rate/Sec
*		*	*	*	*
MQOPEN		48	0.06	31742	0.03
MQCLOSE		48	0.06	31739	0.03
MQPUT		1190	1.72	861930	0.90
MQPUT1		46	0.06	31731	0.03
MQGET		1406	2.04	952669	1.00
MQINQ		0	0.00	1	0.00
MQSET		0	0.00	0	0.00
Close Handles		0	0.00	0	0.00
HELP INFORMATION = PF1 D-QA029A NASTMQ PF KEY ASSIGNMENTS = PA1					

TMON MQ provides a list of all the counts and rates that a message is consuming

IBM MQ SUPPORT

The ASG-TMON MQ Solution Suite supports MQ on the following platforms at the version levels supported by IBM:

- MQ for z/OS
- MQ for Windows
- MQ for AIX
- MQ for HP-UX
- MQ for Solaris
- MMQ for Linux, zLinux
- MQ for IBM i

FOLLOW US



www.asg.com

ASG Technologies is a global software company providing the only integrated platform and flexible end to end solution for the information powered enterprise. ASG is the only solutions provider for both Information Management and IT Systems and has over 3,500 customers worldwide. To learn more visit www.asg.com.

ASG Technologies | 1.239.435.2200 or 1.800.932.5536 | 708 Goodlette Road North, Naples, Florida USA 34102 | www.asg.com

© 2020 ASG Technologies Group, Inc.

All products mentioned are trademarks or registered trademarks of their respective holders.

ASG_TMON_for_MQ_Suite_20200130en