

Rocket® Modern Experience

Deliver top-notch experiences and drive more value from your IBM Z® and IBM® i applications

Product benefits

- 1 Reduce friction and improve productivity of your legacy IBM Z® and IBM® i applications
- 2 Build modern experiences aligned with user workflows and customer outcomes
- 3 Increase competitiveness thru cost savings and improved efficiency
- 4 Meet evolving market requirements and attract a new generation of digital-first customers and employees
- 5 Gain visibility and easily identify risks that emerge during modernization

To remain competitive in today's digital business world, core applications on IBM Z® and IBM® i must continue to deliver value to customers. Maintaining these legacy green-screen applications can be challenging, especially with only a select group of experts who possess the relevant skills and understanding—but they hold decades worth of data and processes interwoven into daily business operations, and the prospect of replacing them can be costly in both time and money.

Modernization of these core applications remains the only sustainable path to futureproofing your business operations. Enter Rocket® Modern Experience (MX), a central management platform that synchronizes every green screen in your organization and enables deployment of pre-built or dynamically customized UI templates—no COBOL or RPG expertise required. Empower your legacy applications while ensuring business continuity, with Rocket Modern Experience.





Reduce friction and improve productivity of legacy business applications

Employees navigating traditional green-screen interfaces may be less efficient and agile in performing their jobs. If a customer service agent is not able to quickly access customer data, that slows resolution times. And bottlenecks create frustration on both ends, causing customer churn and eroding the reputation of your business.

Rocket Modern Experience upgrades traditional green screens with modern UIs that employees find intuitive. Leveraging the solution's central management capabilities, you can merge the workflows of multiple green screens, reorganize forms or fields, and streamline data flows from your core applications to websites or mobile devices. Keep your employees productive and your customers satisfied through modernized UIs that meet the evolving needs of today's digital world.

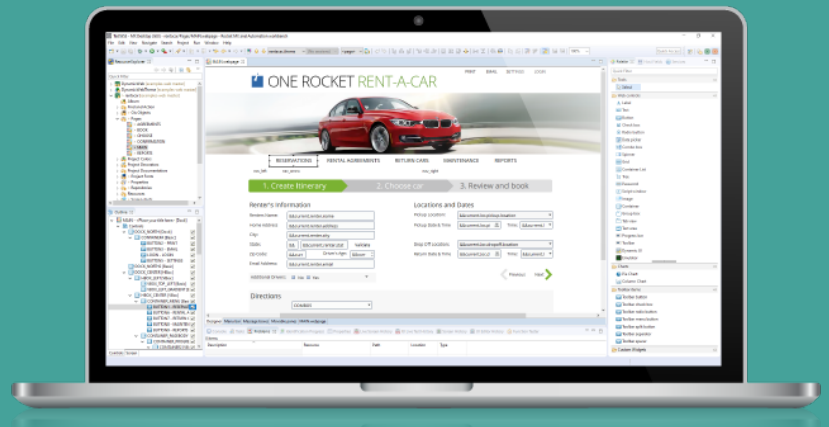


Strengthen business competitiveness by attracting new developer talent

Maintaining legacy business applications in your IBM Z and IBM i platforms often requires COBOL or RPG skillsets that are fast becoming rare in the industry. Extend the durability of your legacy investments while leveraging the agile skillsets of next-generation developers with the HTML5 forward compatibility of Rocket Modern Experience.

Your developers can seamlessly write modern interfaces and improve workflows of your hosted core applications, better preparing them for web or mobile experiences. Maintenance and troubleshooting can be executed using current standard languages like JavaScript or CSS, ensuring your legacy applications remain robust and capable of supporting evolving business objectives.

Figure 1: The Rocket MX & Automation workbench lets users build optimized workflows that connect complex green screens to a web- or GUI-based interface.





Retain a new generation of digital-first customers and employees

Elevate your IBM Z and IBM i applications into the modern digital era and dispel perceptions that your organization is behind the times. As digitally savvy competitors increasingly enter your market, remain appealing to fresh new talent and profitable customers by demonstrating a commitment to rapid digitization and modernization.

With Rocket Modern Experience, you can create a modern and inclusive work environment that competes with the most agile businesses today while continuing to leverage the proven strengths of your core legacy applications.



Enable total visibility and easily identify risks that emerge during modernization

Leverage the central management capabilities of Rocket Modern Experience, which provides a single window to manage multiple green-screen workflows, data sets, and processes. Roll out modernization in a controlled and structured manner, with the right process controls so you can accurately and rapidly respond to new market and user demands.

Rocket Modern Experience helps organizations avoid inefficiencies by ensuring common access to a single source of truth and visibility into what different teams are working on.

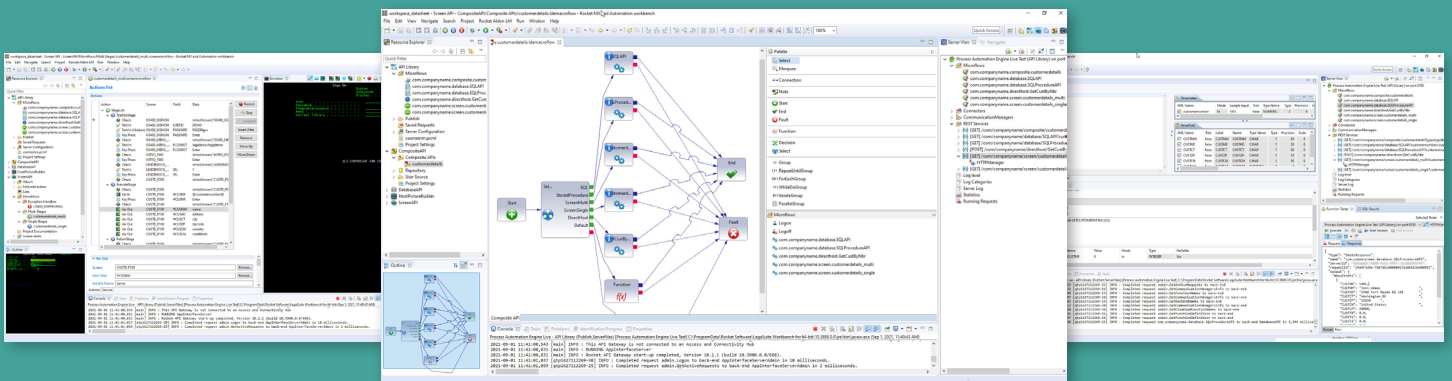


Figure 2: Rocket MX (Web Edition), working in conjunction with Rocket® Process Automation, lets you easily manage connections between multiple enterprise applications and modernized user interfaces.



Figure 3: The Rocket MX & Automation hub allows you to manager your MX instances.

MX & Automation hub

MX Web Instances

Only show favorite engines

Did you know that when you hover over a cell there is a handy filter icon which you can use to include/exclude records matching that cell?

Reset

Help

Status	Name	Type	Address	Current Web Application	Last Registered by	Last Registered on	Realm	Environment
★ Running	Mars	Web engine	http://rocketsoftware.com:1350/		Albert Administrator	31 Aug 2021 09:47:34	Support Department	Production
★ Running	Mercury	Web engine	http://rocketsoftware.com:1351/	OrderEntryPortal / 1.0.1	Albert Administrator	31 Aug 2021 09:47:36	Acme Corporation	Production
★ Running	Mercury Servlet	Web servlet	http://rocketsoftware.com:8080/mercury	OrderEntryPortal / 1.0.1	Albert Administrator	31 Aug 2021 11:53:05	Acme Corporation	Production
★ Running	Venus	Web engine	http://rocketsoftware.com:1352/	TimeSheetWeb / 2.1.0	Albert Administrator	31 Aug 2021 09:47:40	Finance Department	Production
★ Running	Venus Servlet	Web servlet	http://rocketsoftware.com:8080/venus	TimeSheetWeb / 2.1.0	Albert Administrator	31 Aug 2021 11:45:22	Finance Department	Production
★ Configurable	Mars Servlet	Web servlet	http://rocketsoftware.com:8080/mars		Albert Administrator	31 Aug 2021 09:49:54	Support Department	Production

Items per page: 10 1-6 of 6 items

1 of 1 pages

Figure 4: The hub also allows you to centrally deploy updates across your entire environment in one click.

MX & Automation hub

Web Applications

CustomerCentral

OrderEntryPortal

TimeSheetWeb

Deploy "CustomerCentral" ver. 1.0.6 to engines:

Realm

Support Department

Environment

Production

Only show favorite engines

Only show compatible engines

Switch to deployment progress after closing

<input checked="" type="checkbox"/>	Name	Type	Address	Realm	Environment	Properties
<input checked="" type="checkbox"/>	★ Mars	Web engine	http://rocketsoftware.com:1350/	Support Department	Production	deployment.properties
<input checked="" type="checkbox"/>	★ Mars Servlet	Web servlet	http://rocketsoftware.com:8080/mars	Support Department	Production	deployment.properties

Deploy

Cancel

Upload Web Application

Description

Rocket® Modern Experience technical specifications and system requirements

Operating system requirements

Rocket Modern Experience workbench

- Microsoft Windows 10
- Rocket Modern Experience Workbench includes Eclipse 4.6.3 and Java 1.8.0_201

Rocket MX engine (Web or GUI)

- Rocket Modern Experience for Windows
 - Windows 2016 server system
- Rocket Modern Experience for IBM® i
 - IBM® PASE for i
 - V7R4 and later for IBM PASE for i; we recommend keeping current with IBM's support level
- Rocket Modern Experience for Unix/Linux
 - AIX 7.2-TL3-SP0
 - Red Hat Enterprise Linux for Power LE 8.0
 - Red Hat Enterprise Linux for x86_64 8.0
 - Red Hat 8.0 Linux zSeries

Screen protocols

- IBM® i
 - 5250
- IBM Z®
 - 3270
- ICL Mainframe
 - 7561-IRIS
 - ICL-Forms
 - DFP
- MultiValue
 - VT (vt100)
 - ADDS Viewpoint
- Unix/Linux, Open VMS, DEC VAX
 - VT (vt52, vt100, vt101, vt102, vt220, vt320, vt420, vt500)
 - Wyse (Wyse50/Wyse60)
 - Prism
 - ADDS Viewpoint
 - Qume QVT
 - Teletype TVI
 - Prime
 - Siemens 97801
- HPE/Tandem NonStop
 - 6530

MX and Automation hub

- Microsoft Windows Server
- Software: Java 64-bit
- Databases
 - IBM Db2® for Microsoft Windows/Linux
 - Microsoft SQL Server
 - Oracle MySQL

Security

- Encryption
 - 1.0.2t, includes TLS 1.2 support encryption
 - AES 256-bit
 - AESBC
 - Base-64
 - Blowfish (custom)
 - DES
 - FIPS 140-2
 - RSA public key up to 1024 bit
- IBM single-sign-on encryption
 - DES
 - Kerberos
- PKI certificate support
 - SSL certificate authentication (X.509)
- Additional security
 - SHA-1
 - SSH-1
 - SSH-2

Rocket Modern Experience (Web Edition)

- Web browsers*
 - Google Chrome (64-bit)
 - Microsoft Edge
 - Mozilla Firefox

*Latest general release version recommended
- Web Desktop Client
 - Microsoft Windows 10
 - .NET Framework 4.6.1
- Servlet
 - Apache Tomcat 9.0
 - Integrated Web Application Server for IBM i 8.5 (IBM JVM8)
 - Software: Java 64-bit

Rocket Modern Experience (Desktop Edition)

- Desktop/laptop
 - Microsoft Windows 10
 - Apple macOS with Java
 - Linux distributions with Java
- Java clients running on Rocket® Open
- Web Launch (OWL)
 - Microsoft Windows
 - macOS
 - Linux desktops that support a Java Runtime Environment
- GUI clients*
 - Java 11 for Rocket Open Web Launch (OWL)
 - Java 8 for Java Web Start deployment

* Embedded ActiveX clients in browsers are supported in Microsoft Internet Explorer. Non-embedded Windows clients started in browsers are supported (without ActiveX support) by Google Chrome, Microsoft Edge Chromium, Mozilla Firefox, Opera

Rocket Software empowers organizations to create legendary impact in the world through innovation in legacy technologies. With deep expertise in IBM Z, IBM Power, and database and connectivity solutions, Rocket solutions power tens of thousands of global businesses, solving real problems and making real-world impact.

© Rocket Software, Inc. or its affiliates 1990-2021. All rights reserved. Rocket and the Rocket Software logos are registered trademarks of Rocket Software, Inc. Other product and service names might be trademarks of Rocket Software or its affiliates.

Rocket_HXOverview_Datasheet_v6