

## ASG REMOTE DESKTOP

Remote Access in Real-Time

### OVERVIEW

ASG-Remote Desktop is the indispensable tool for administrative access to remote systems. The tool features integrated connection protocols, allowing management of Windows, Citrix, Linux/UNIX, Macintosh and browser based systems – from any computer via USB stick, if necessary.

### FUNCTIONALITY

ASG-Remote Desktop provides many features focused on the simplification of system administration. In addition to making it easy to administer remote connections, the tool allows access to many applications and websites required for the administrator's daily work. The central console can be customized in many ways. Layouts define an arrangement of multiple connections - restored with one click.

ASG-Remote Desktop is ideal for administrators who require multiple simultaneous connections to different systems. In addition to RDP (Remote Desktop Protocol), the tool supports ICA, VNC, HTTP/S, and more.

To avoid duplicate entry of data ASG-Remote Desktop can be synchronized against Active Directory, VMware, csv files and most of the popular password managers.

ASG-Remote Desktop can be used for single user administration in file mode or with a central database for managing your environment for your team(s).

### EASE OF USE

Connection objects, external applications and Credentials can be conveniently managed in folders. Through synchronization it is possible to automatically add objects from Active Directory or VMware ESX and keep this information always up to date. For large environments, the integrated search function helps to locate specific computers and users. When running ASG-Remote Desktop from a USB stick it may be used on any computer without install or footprint.

### SECURITY AS A CENTRAL FEATURE

With ASG-Remote Desktop, administrators can protect their environment data in different ways. In file mode all data or specifically credential information can be encrypted. In database mode all personal information can be securely saved with a user key, ensuring other users are denied access. An AES-256Bit-Algorithm is used to encrypt the data.

In database mode the main Administrator can also set various permissions restricting users or groups from accessing all functionality and/or seeing the entire environment. This can be used to delegate work in large team structures.

### MAIN FEATURES

- Manages Windows, Citrix, Linux/ Unix, Macintosh and browser based systems
- Supports protocols including RDP, ICA, VNC,SSH, Telnet and HTTP/S
- Uses Powershell and commandline arguments for automation
- Strong encryption on all critical data
- Synchronizes server objects from Active Directory or VMware ESX
- Integrates external applications
- Supports plugin for external Passwordmanagers
- Supports basic or form based authentication through different browser engines
- Allows extensive configuration of administrative permissions in database mode
- Permits remote administration via USB – for mobile use without any installation

## DATABASE MODE

In large IT infrastructures, several administrators often have to access the same connections at the same time. To enable this all login credentials and connection objects may be stored in a central database. With ASG-Remote Desktop connected to this database it is possible for multiple administrators to create, change, view, and modify settings according to the assigned permissions, even if the database goes off line.

## PERSONALISATION

Each member of a team can choose between different settings of an object. Nearly all data from all objects can be passed to their child objects, can be overwritten or just use some personal settings for each user. This allows users to manage needed settings in efficient ways.

## CONNECTION SETTINGS

Many administrators have to perform the same task on multiple connections. ASG-Remote Desktop allows administrators to apply many tasks across multiple connections with a single click! For instance, all servers within a folder can be simultaneously connected or disconnected with 2 clicks. The Quick Connect feature allows the user to start individual connections without previously creating a connection object. Regardless of the connection settings the user can freely select the display mode, the protocol to be used or the user for a specific connection.

## REPORTING

The Connection History displays a list of the most recently used connections and allows them to be reopened. ASG-Remote Desktop provides various logs (errors, changes, security) that make it easier to trace events, activities and a logbook for individual information, or to track changes.

## EXPORT AND IMPORT

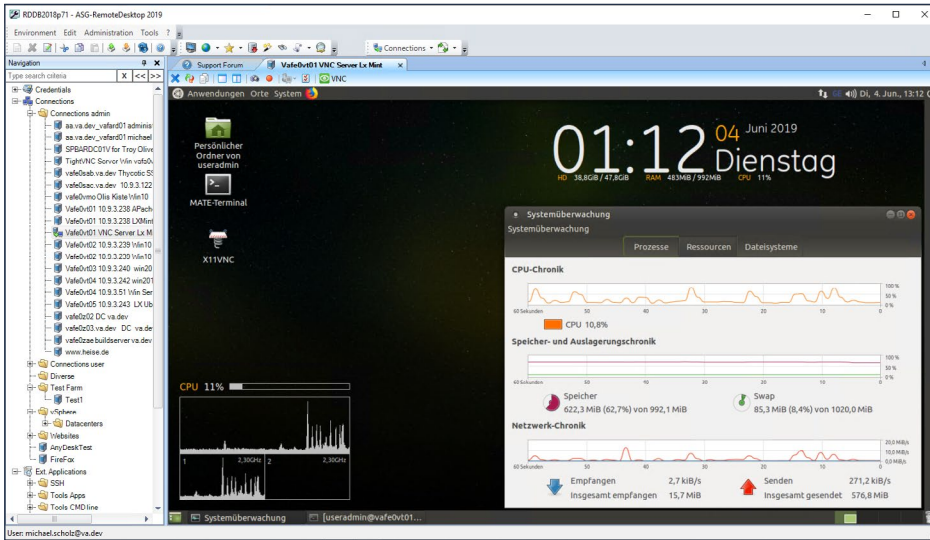
Every object, log or setting can be exported and imported back to any environment. These tasks can be performed between different environment types (File / Database).

## TECHNICAL REQUIREMENTS:

- Microsoft Windows Server 2008, 2008 R2 and 2012, x86 or x64 platform, Microsoft Windows Server 2016, 2019 x86 or x64 platform
- Microsoft Windows 8 and 8.1, x86 and x64 platform
- Microsoft Windows 10 x86 or x64 platform
- Microsoft SQL Server 2012, 2014, 2016, 2017, 2019
- Microsoft .NET Framework 4.6.2 (download available at Microsoft website)
- Optional Components:
  - Microsoft Direct Show
  - Windows Media Player 9
  - Visual C++ Redistributable for Visual Studio 2015 ( for Gecko/Chromium Browser Control)

## GUI & HANDLING

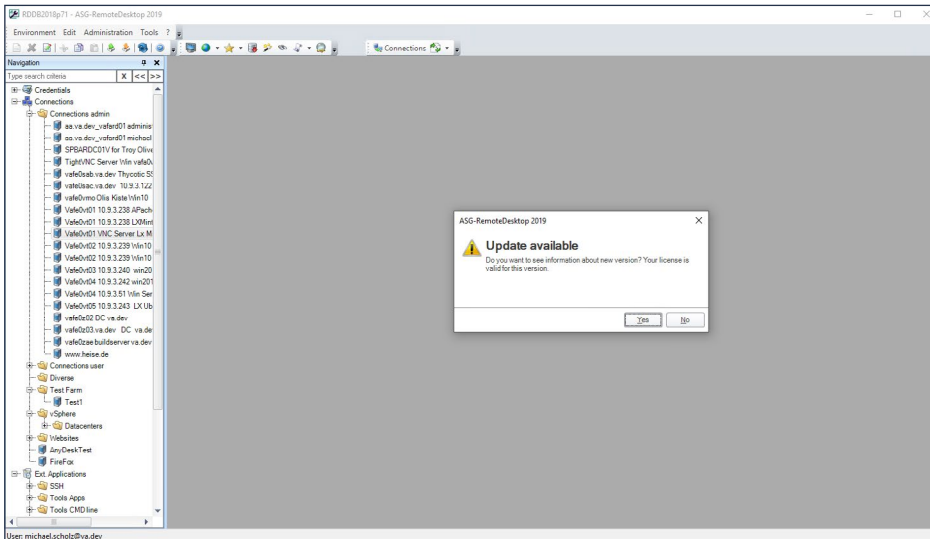
ASG-Remote Desktop provides a single, unified view of all connections, credentials, external applications and favorites in the Navigation Pane on the left, and in the content area on the right. Tabs are dockable, moveable and can be released and resized.



## SUPPORT & UPDATES

Any purchase contains a one year subscription that entitles an organization to use new updates and products released in that year, as well as unlimited support through the user forum after free registration.

Go to <https://forum.asg-rd.com> for the latest updates, upgrades, and patches. Apply them to systems as needed.



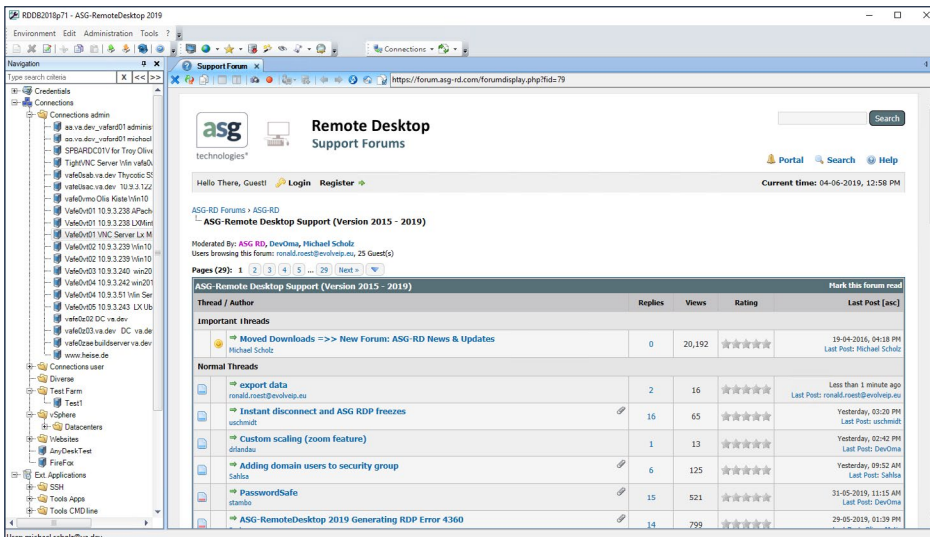
## SUPPORT-FORUM

<https://forum.asg-rd.com>

### Latest Version

Always find the latest version including its release notes in the user forum:

<https://forum.asg-rd.com/latest>





FOLLOW US



[www.asg.com](http://www.asg.com)

---

ASG Technologies is a global software company providing the only integrated platform and flexible end to end solution for the information powered enterprise. ASG is the only solutions provider for both Information Management and IT Systems and has over 3,500 customers worldwide. To learn more visit [www.asg.com](http://www.asg.com).

---

ASG Technologies | 1.239.435.2200 or 1.800.932.5536 | 708 Goodlette Road North, Naples, Florida USA 34102 | [www.asg.com](http://www.asg.com)

© 2019 ASG Technologies Group, Inc.  
All products mentioned are trademarks or registered trademarks of their respective holders.

ASG\_Remote\_Desktop\_20191104en