



DATASHEET

Rocket LegaSuite

Modernize Mission-Critical Applications to Increase Efficiency and Productivity

- Uncover new business value from your existing enterprise applications
- Extend enterprise applications to your web and mobile devices
- Improve staff productivity and satisfaction from your existing enterprise applications

Rocket® LegaSuite GUI transforms older user interfaces into modern, efficient graphical experiences

Rocket® LegaSuite Web extends modernized graphical interfaces to browsers, smartphones, and tablets.

Thousands of organizations run mission-critical business solutions on the IBM i platform. Though many of these solutions have been modernized at some point, keeping pace with technology is an ongoing process. Today's users expect enterprise applications to offer the same kind of browser, mobile, and tablet experiences as consumer applications.

Rocket® LegaSuite makes it easy to modernize your critical business applications and avoid the time, expense, and risk associated with recoding or replacing them. Rocket® LegaSuite GUI helps you create fresh, modern interfaces for older applications, while Rocket® LegaSuite Web modernizes and extends application interfaces to web browsers, smartphones, and tablets.

Unlike other solutions, LegaSuite lets you leverage existing development without having to install or modify code. LegaSuite also automatically extracts and synchronizes all screens of a legacy application with any modernized user interface, ensuring consistent and coordinated change management at all ends of the organization.





▶ Uncover new business value from your existing enterprise applications

New business requirements to support web and mobile are exposing the limitations of older enterprise applications that rely on rigid screen-based applications. The inability to extend these applications to new systems of engagement can negatively impact sales of new products, customer service and productivity, forcing organizations to recode or replace them at significant cost and risk.

Rocket LegaSuite makes it easy to modernize your critical business applications without the time, risk, and expense of recoding or replacing them. That means that the investments and the customizations these applications receive over time continue to benefit your organization. Older green-screens are converted into modern user interfaces that offer a compelling and productive experience to your customers and employees.

“ *Not only have new employees reduced their training time by more than a week, but our claims adjusters continue to provide positive feedback about [Rocket LegaSuite]. Everything is so perfectly organized, you don't really have to hunt to find the information you need. In fact, instead of having to use all the function keys, you just double click.* ”

Chris Smith
Information Technology Director, CISM
Safety Insurance

▶ Extend enterprise applications to your web and mobile devices

Customers and employees alike benefit from modern UIs that are both visually compelling and productive. They also expect the same compelling and productive UI to follow them wherever they may go on their favorite mobile device.

Rocket LegaSuite Web employs HTML5 to extend your screen-based applications to run on any device—PCs, tablets, or smartphones. Modern UIs are written once, and can be deployed on any web or mobile platform that customer or employees prefer. For enhanced web functionality, use Rocket® API in combination with Rocket LegaSuite Web to bring in additional data sources or orchestrate multiple screens into an optimized workflow that underpins a richer, more effective user experience.

▶ Improve productivity and satisfaction from your existing enterprise applications

Older, less intuitive user interfaces can create challenges for organizations that want to attract and retain quality employees. Millennial employees expect business systems that use the same modern desktop, web and mobile interfaces they use outside of work.

With this challenge in mind, Rocket LegaSuite Web makes it easy to design a UI that fits your organization's specific needs. The solution allows for custom placement of specific fields and widgets wherever your organization sees fit, and provides wizards and templates that guide you through building an effective current UI. Whatever your preference may be, Rocket LegaSuite makes it easy to arrive at a UI that is easier to use and promotes productivity. Your employees and your customers are more engaged, and satisfaction levels remain high.



The LegaSuite Workbench GUI helps developers connect fields in green screens to modernized user interfaces. The drag-and-drop environment places these fields in any position on the modernized UI for ease of use and efficiency. The result is faster time to deployment of modernized screens, with complete control over their look and feel.

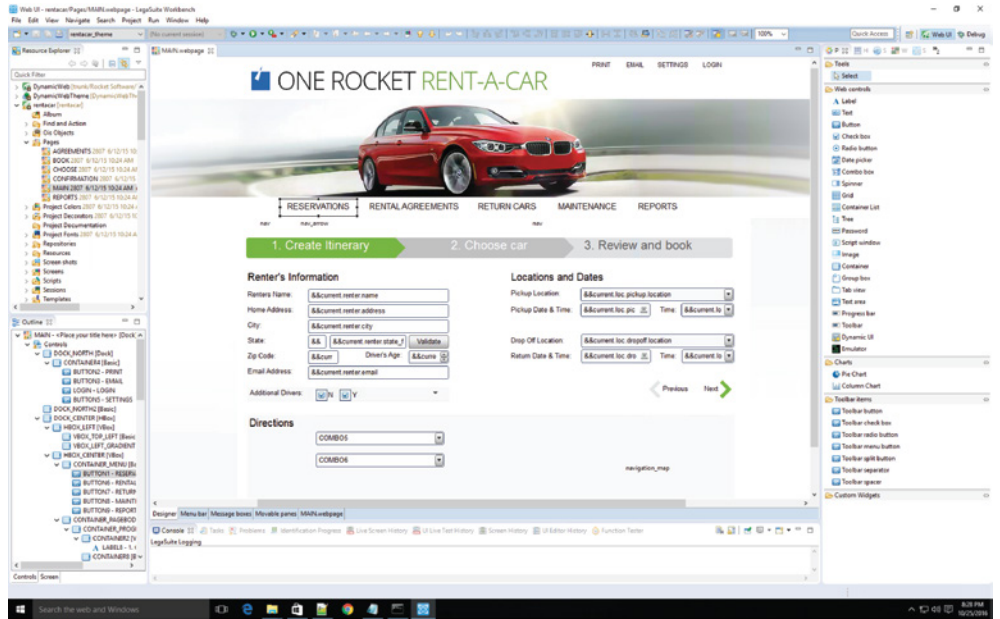


Figure 1: The Rocket LegaSuite Web and GUI Workbench lets users build optimized workflows that connect complex green screens to a web- or GUI-based interfaces.

LegaSuite Web, working in conjunction with Rocket API, provides an easy way to connect multiple enterprise application workflows to a single modernized user interface of your choice.

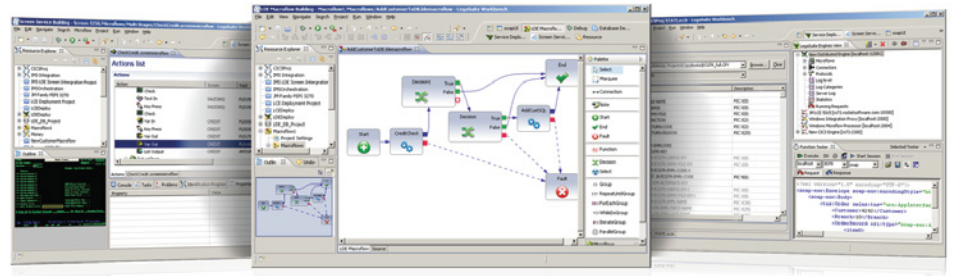


Figure 2: LegaSuite Web, working in conjunction with Rocket API, lets you easily manage connections between multiple enterprise applications and modernized user interfaces.



Rocket LegaSuite modernizes legacy applications with the interactive and dynamic user experiences your workforce needs to get the job done. LegaSuite Web extends your applications to the web, smartphones, tablets, and other mobile devices, helping you meet your business needs and reach your employees and customers regardless of their location.

Figure 3: With Rocket LegaSuite GUI and Web, you can build UIs that are pleasing, compelling, and easy to use.

Tech Specs

ROCKET LEGASUITE WORKBENCH SYSTEM REQUIREMENT

Operating System:

- Microsoft Windows 7, Windows 8, or 10

Memory:

- 8 GB (minimum)

Hard Disk Space:

- 5 GB (minimum)

ROCKET LEGASUITE WEB ENGINE: WINDOWS VERSION

Operating System:

- Microsoft Windows 2016 Server
- Microsoft Windows 2012/2012 R2 (64-bit) Server System
- Microsoft Windows 7, 8, or 10

Memory:

- 2 GB RAM (minimum), 4 GB or more recommended

Hard Disk Space:

- 2 GB RAM (minimum)

ROCKET LEGASUITE ENGINE (Web or GUI): IBM i VERSION

Operating System:

- V6R1M0 (minimum; we recommend keeping current with IBM support level)
- V7RX required for IBM PASE for I version

ROCKET LEGASUITE ENGINE (Web or GUI): UNIX/LINUX VERSION

Operating System:

- AIX: Version 6.1
- HP-UX IA (Itanium): Version 11.31
- Oracle Solaris Sparc and Intel: Version 10
- Linux on x64 architecture
- CentOS 7
- Linux on Power8 architecture

Memory:

- 2 GB RAM (minimum), 4 GB or more recommended

Hard Disk Space:

- 2 GB RAM (minimum)

SCREEN PROTOCOLS:

IBM i

- 5250

IBM Z

- 3270

ICL Mainframe

- 7561-IRIS
- ICL-Forms
- DFP

MultiValue

- VT100
- ADDS Viewpoint

Unix/Linux, Open VMS, DEC VAX

- VT (vt52, vt100, vt220, vt320, vt420)
- Wyse (Wyse50/Wyse60)
- Prism
- ADDS Viewpoint
- Qume QVT
- Televideo TVI

HP/Tandem NonStop

- 6530

LEGASUITE WEB ONLY

ACCESSING LEGASUITE WEB SOLUTIONS

Web Browsers: LegaSuite Web end users may access Web solutions on the following browsers:

- Google Chrome
- Microsoft Internet Explorer 11
- Mozilla Firefox
- Opera
- Edge
- Safari

It is advisable to use the latest general release version.

WEB DESKTOP CLIENT

Operating System:

- Microsoft Windows 7, 8, or 10
- .NET Framework 4.0 or later

Memory:

- 1 GB RAM (minimum)

Hard disk Space:

- 500 MB (minimum), 1 GB recommended

LEGASUITE GUI ONLY

ACCESSING LEGASUITE GUI SOLUTIONS

Desktop/Laptop:

- Microsoft Windows 7, Windows 8, or 10
- Macintosh OS/X with Java 1.7
- Linux distributions with Java 1.7

Rocket LegaSuite GUI and Web belong to our Rocket family of IBM i-based modernization solutions. In addition to transforming older user interfaces into modern and efficient graphical experiences, Rocket IBM i-based modernization solutions include:

- **Rocket® Lifecycle Manager**, which helps you manage and automate DevOps for all of your platforms including IBM i, Windows, web, and mobile.
- **Rocket® API**, which connects and integrates enterprise applications with web and mobile platforms.
- **Rocket® Servergraph**, a graphical dashboard monitoring and reporting system that identifies failed backups across your heterogeneous data protection environments, including all major backup platforms and applications from a single view
- **Rocket® iCluster**, which significantly reduces the amount of time a business is able to resume normal operations following an unexpected IBM i business system interruption

-  rocketsoftware.com
-  info@rocketsoftware.com
-  US: 1 855 577 4323
EMEA: 0800-520-0439
APAC: 612 9412 5400
-  twitter.com/rocket
-  [www.linkedin.com/
company/rocket-software](http://www.linkedin.com/company/rocket-software)
-  [www.facebook.com/
RocketSoftwareInc](https://www.facebook.com/RocketSoftwareInc)
-  blog.rocketsoftware.com