

PRODUCT CATALOG

Rocket Software Solutions for IBM i

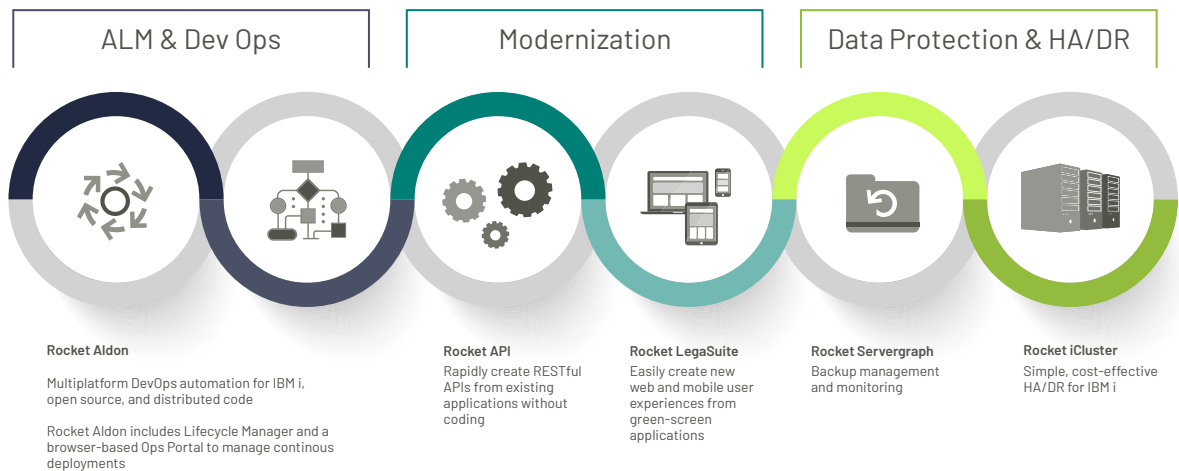
ALM & DEVOPS | MODERNIZATION | DATA PROTECTION & HA/DR

IBM i for the Digital Age

For the last 30 years, Rocket Software has helped IBM® customers optimize their IBM i infrastructure and deliver enhanced user and developer experiences from a modern, agile environment. Whether IBM i customers want to gain visibility into their backup systems or enable an agile DevOps environment, we're there every step of the way.

Our modernization solutions let you extend and enhance the value of your IBM i applications through web UIs and integrations with other IT applications for improved workflows. Our solutions also enable you to build the DevOps environments that will work best for your teams, including automated deployments and integrations with open-source and distributed DevOps tools.

Rocket solutions for IBM i provide flexible and efficient opportunities to evolve your business processes and applications so that they can easily keep up with demanding market expectations and business challenges.

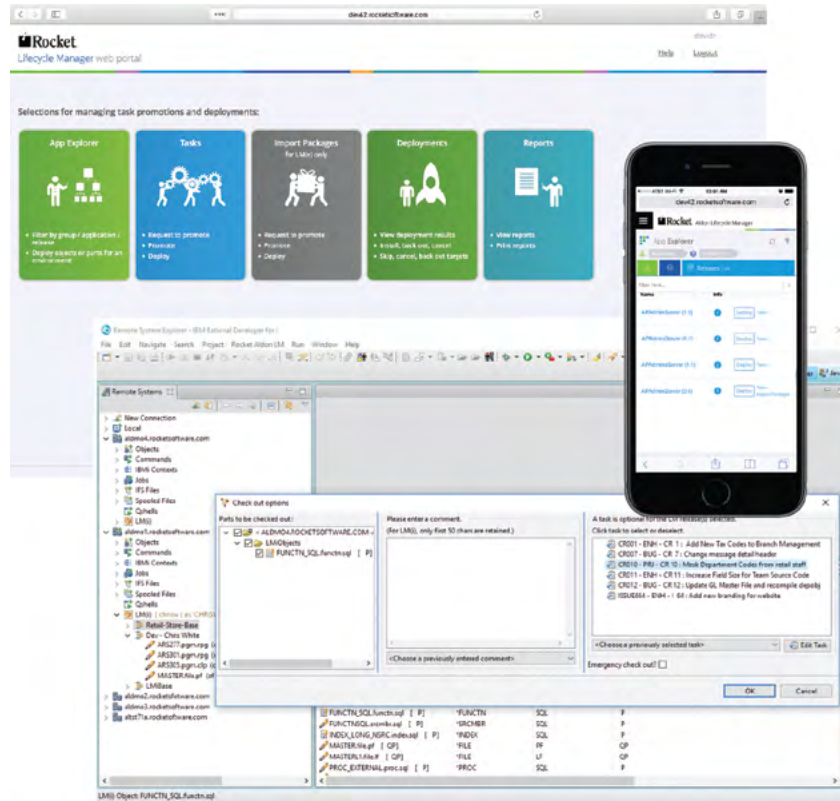


Rocket Aldon®

Rocket Aldon® Lifecycle Manager®

FOR APPLICATION DEVELOPERS

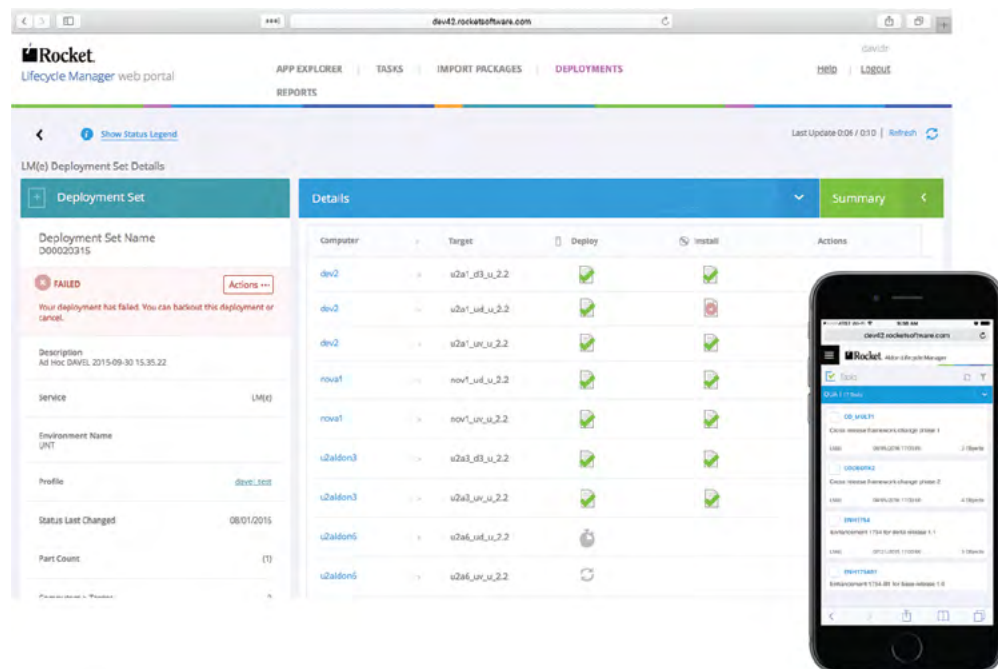
Manage and automate DevOps for IBM i, Windows, web, and mobile.



- Simplify audit compliance
- Automate promotions
- Build everything automatically—including your mobile apps
- Version and store source code securely
- Track application usage with automated analytics
- Keep all devices up to date
- Track and manage your change requests

FOR IT OPERATIONS MANAGERS AND RELEASE MANAGERS

Easily manage and automate deployments across multiple platforms with consistent, auditable processes.



- Automate and synchronize deployments
- Automate and synchronize web, mobile, Windows, MultiValue, and IBM i deployments
- Get success/failure notifications
- Gain visibility into log reports
- Back-out deployments with a push of a button
- Gain integrity verification
- Manage versions
- Track history

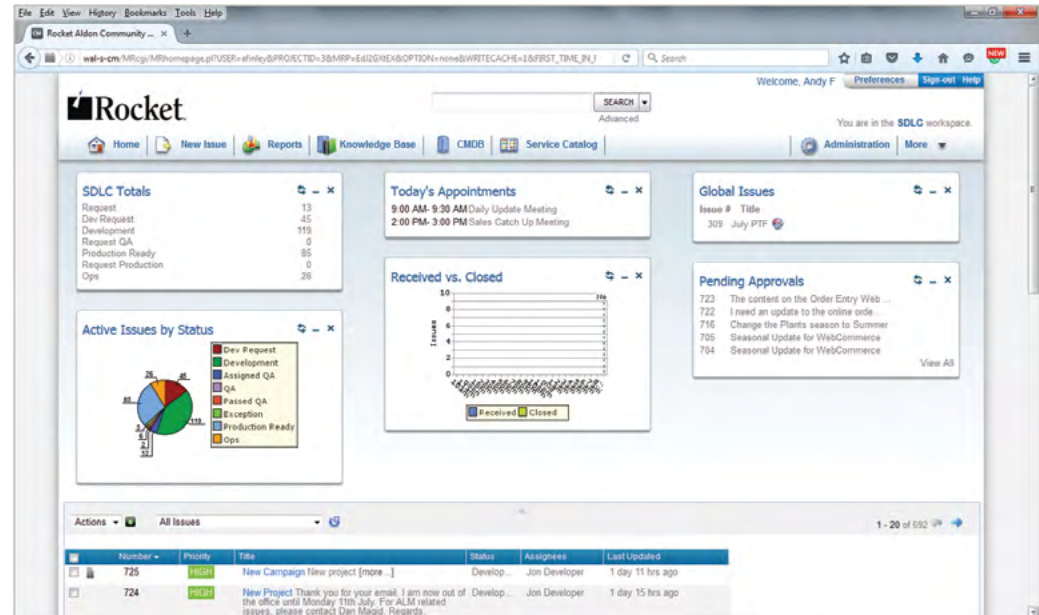
FOR DEVELOPMENT MANAGERS AND RELEASE MANAGERS

Connect application development and IT services to collaborate and deliver the right software at the right time. Enable your developer environment with agile, third-party, and open-source tools.

- Define and manage software requirements from implementation to production
- Accelerate workflows and approval processes
- Respond to changes quickly in coordination with business objectives

FOR DEVELOPMENT MANAGERS AND RELEASE MANAGERS

Connect application development and IT services to collaborate and deliver the right software at the right time. Enable your developer environment with agile, third-party, and open-source tools.



- Define and manage software requirements from implementation to production
- Accelerate workflows and approval processes
- Respond to changes quickly in coordination with business objectives

FOR APPLICATION DEVELOPERS

The screenshot displays the Service Deployment tool interface. The main workspace shows a workflow diagram titled "ProcessPolicyIdemacroflow" with various components like "Start", "Join", "Function", "End", and "Fault". A palette on the right lists components such as "Select", "Interquery", "Note", "Start", "End", "Fault", "Decision", and "Group". The bottom console window shows the execution of a SOAP request, displaying the XML envelope and the response body.

Service Deployment - NewCustomerMacroflow | ProcessPolicyIdemacroflow | LegaSuite Workbench

File Edit View Navigate Search Project Run Window Help

Resource Explorer

- LCE Deployment Projects
 - LCE Deployment
 - LCEState
 - LDE Deploy
 - LDE_deployment00
 - LDEDeploy_old
 - LS GUI
- Macroflows
 - Money
 - MoneyDemo
 - MPL GUI
 - MPL SOA
- NewCustomerMacroflow
- Screen 3270 TN
- Screen Integration Projects
- Screen Web Services
- Test GUI
- TestingGUIProject
- Training
- VT Screen Project

ProcessPolicyIdemacroflow

Workflow Diagram: ProcessPolicyIdemacroflow

- Start (Green circle with 'S')
- Join (Blue circle with 'J')
- Function (Blue circle with 'F')
- End (Green circle with 'E')
- Fault (Red circle with 'X')

Palette

- Select
- Interquery
- Note
- Start
- End
- Fault
- Decision
- Select

LDE Macroflow Source

Function Tester

Console

Selected Tester

```

<?xml version="1.0" encoding="UTF-8"?>
<soap-env:Envelope soap-env:encodingStyle="http://schemas.xmlsoap.org/soap/enencoding/" xmlns:
<soap-env:Body>
  <tns:loc xmlns:tns="urn:apiInterfaceWebServer">
    <Name>StringValue</Name>
    <City>StringValue</City>
    <State>StringValue</State>
    <Phone>StringValue</Phone>
  </tns:loc>
</soap-env:Body>
</soap-env:Envelope>
  
```

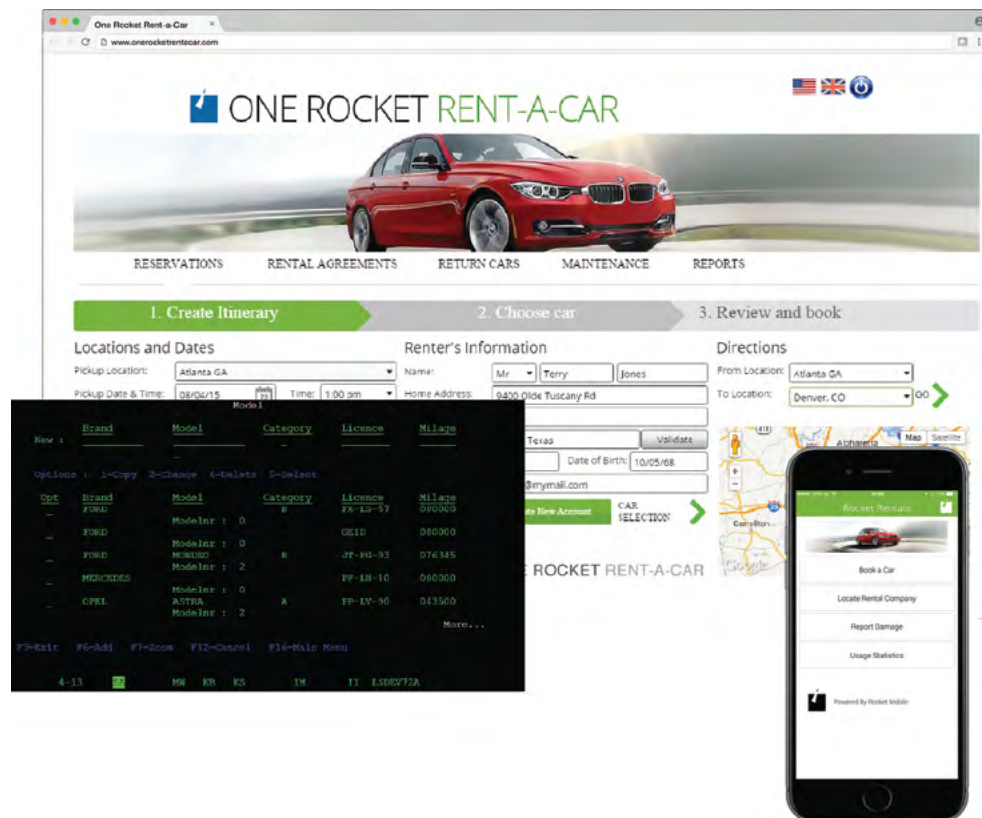
duration: 129 ms

- Orchestrate functions and data requests from multiple sources, platforms, and applications into composite services
- Generate RESTful services automatically from existing applications—no coding required
- Create updated, flexible workflows with newly-generated web services

Rocket LegaSuite®

FOR APPLICATION DEVELOPERS

Transform existing green-screen applications into new web or mobile user experiences.



- Convert 5250 green-screen applications rapidly
- Create flexible HTML5-based apps for desktops, web, or mobile devices
- Streamline business processes and workflows
- Manage all deployments, versions, and licensing from a centralized location

Rocket Servergraph®

FOR BACKUP ADMINISTRATORS AND IT OPERATIONS MANAGERS

Reduce the cost and complexity of monitoring and reporting on the IBM i platform.

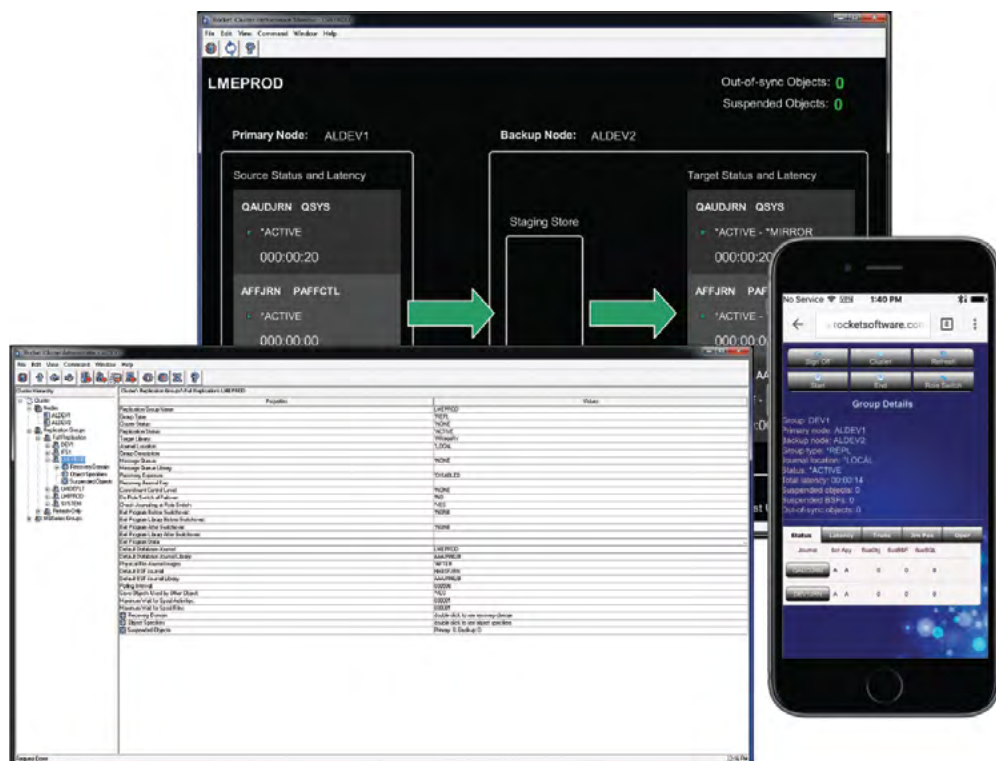


- Quickly identify and resolve problems, with automated alerts via a single view
- Deliver the right information to the right people at the right time
- Simplify audit preparation and ensure compliance with regulations and internal SLAs
- Extend business continuity for IBM i environments

Rocket iCluster®

FOR BACKUP ADMINISTRATORS AND IT OPERATIONS MANAGERS

Get peace of mind and complete business continuity with High Availability/Disaster Recovery (HA/DR) replication solutions.



- Protect your business with real-time replication and immediate recovery
- Provide the highest fidelity through matchmerge of audit and database transactions
- Get high-speed operational switching and access between geographically distant locations during planned and unplanned downtime
- Empower any server to be the master for easy, fast configuration, with updates to all other servers automatically
- Replicate data to a data warehouse for near real-time analytics without affecting impact production systems

Get legendary results on IBM i

We empower organizations to achieve legendary outcomes with their legacy investments through innovation in data, DevOps, open-source, cloud technology, and more. With deep expertise in IBM Z, IBM Power, embedded database systems and application servers, our solutions are powering thousands of global businesses, solving real problems and generating real-world impact every day. With more than 70% of the world's IT workload running on legacy platforms, we help customers innovate using the technology and data they already have, so they can always be ready for what comes next. We are headquartered in the Boston area with locations around the world.



© Rocket Software, Inc. or its affiliates 1990-2020. All rights reserved. Rocket and the Rocket Software logos are registered trademarks of Rocket Software, Inc. Other product and service names might be trademarks of Rocket Software or its affiliates. RS_PC_IBMISolutions_May2020_FinalDigital