

Rocket® z/Trim Operations Analytics

Mainframe utilization and optimization

According to IBM®, 80% of the world's business-critical data resides on IBM Z mainframes. But due to complex reporting processes, often only mainframe experts truly understand how the platform is being used. This limited understanding between business stakeholders and IT leaders can lead to challenges such as missed optimization opportunities, issues with chargeback processes and exposure to MSU penalties, making budget control difficult.

Rocket® z/Trim Operations Analytics allows you to easily visualize your mainframe resource consumption and have meaningful conversations with business and IT leaders about mainframe utilization and optimization. With transparency and understanding across all stakeholders, businesses are empowered to make informed decisions about the mainframe, quickly driving down costs and helping you avoid penalties.

Product benefit list

- Save money through resource optimization planning and efficiency gains
- Increase productivity with easy-to-use dashboards that give transparency to stakeholders
- Realize positive ROI in months—not years

Quickly reduce mainframe costs

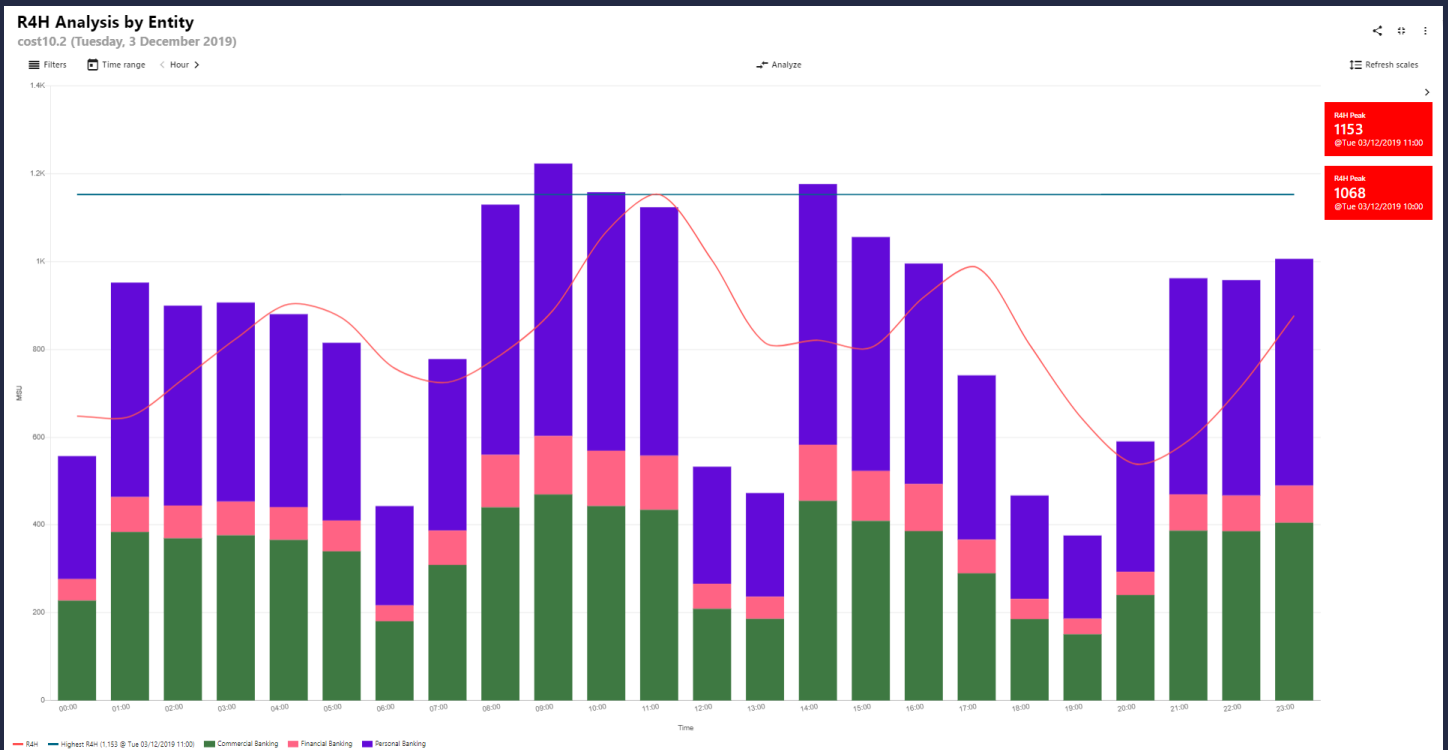
Rocket z/Trim lets customers access data quickly in order to optimize mainframe utilization and drive down costs. With z/Trim, mainframe managers get insight into mainframe MSU usage and can share easy-to-understand metrics with leadership about MSUs consumed by applications, and their specific impacts to the budget.

Increase visibility and understanding of mainframe utilization

Rocket z/Trim provides visibility into your in-house and outsourced mainframe resource consumption with just one click. Interact with data on the fly to better understand multiple dimensions of usage. See the details about consumption or present in a format for business stakeholders, including chargeback reporting.

Save time with automation

Rocket z/Trim allows you to automate mainframe MSU consumption reports and enables the identification of detailed consumption in a few minutes. This frees up experienced mainframe personnel to work on more business-critical tasks.

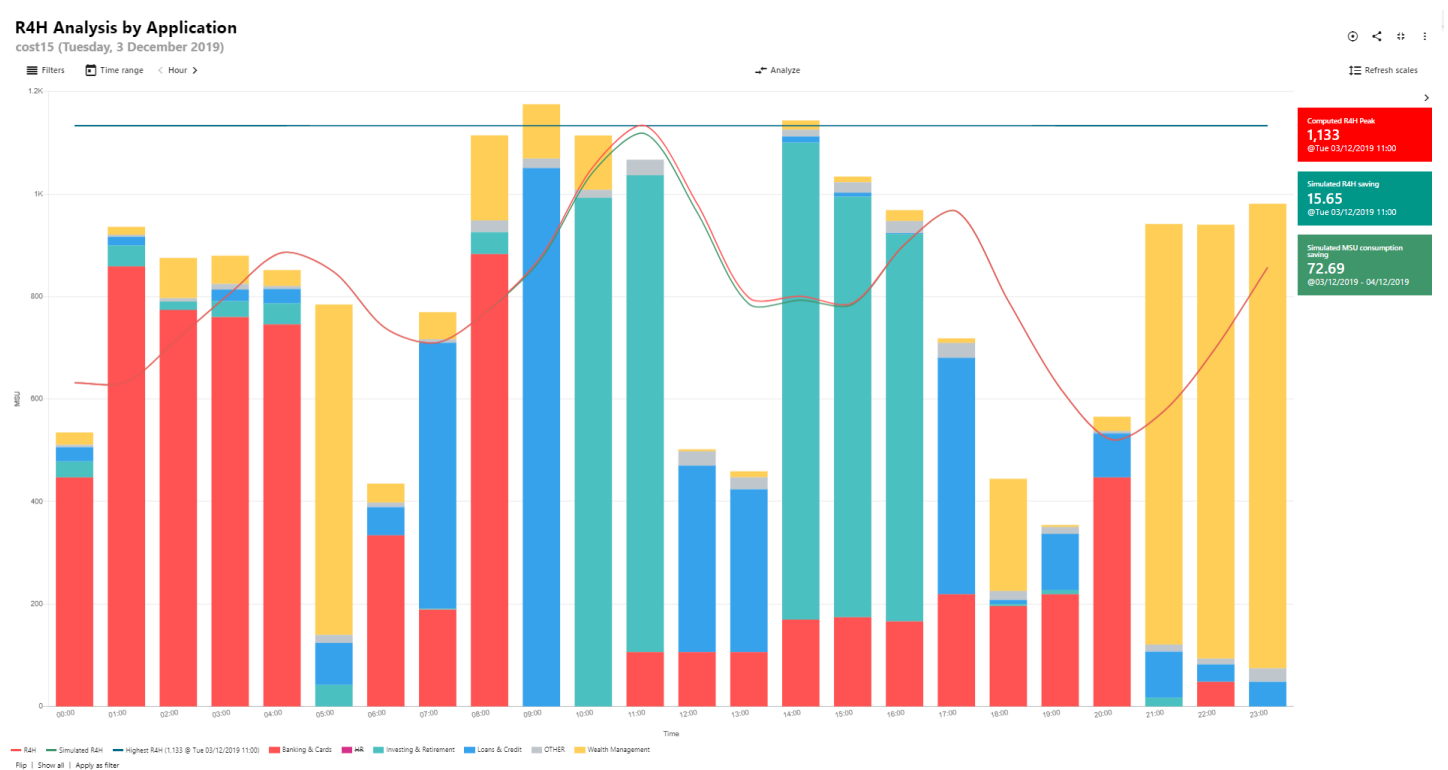


R4H analysis per business entities



Whether managing your mainframe in-house or working with an outsourced vendor, Rocket z/Trim Operations Analytics allows you to:

- Understand what is running on your mainframe and the resource impact of each process, filtered by business entity, program, or application.
- Quickly estimate how much you will save by optimizing a program or an application.
- Provide quick access to Directors, Business Application Managers and IT Operation Managers via out-of-the-box dashboards with customized views of mainframe activity.
- Enable users to create/customize their dashboard with a few clicks.
- Provide interactive functions for live analysis of mainframe activity with an easy-to-use sharing feature to send to other stakeholders with one click.
- Automate delivery and stay apprised of mainframe activity via dashboard subscriptions



Measure the impact of any application, program, or workload on the R4H peak



Tech Specs

Built using modern technologies, z/Trim provides out-of-the-box, easy-to-customize dashboards. It's a lightweight solution that can be implemented and customized in a few hours. z/Trim installation is not mainframe intrusive, and it does not require mainframe configuration changes.

Rocket z/Trim Operation Analytics has the following requirements:

Server Platform

Linux—server or VM server

- Linux
- zLinux
- Windows Server

Server pre-requisites

The following applications are required on the z/Trim host machine if using the install package:

- Java 8
- Tomcat 9
- Elasticsearch 6.8.1
- Kibana 6.8.1

Elasticsearch ELK Stack

Elasticsearch is an open-source, scalable, distributed analytical search engine used by many banks and insurance companies. The Elastic Stack security features enable customers to easily secure their environment with password protection, encrypted communications, role-based access control, IP filtering, and auditing.

For the client computer

z/Trim Operations Analytics was developed on technology that natively supports modern web browsers such as Chrome, Internet Explorer 11, Mozilla Firefox, Opera, etc. The following web browsers are recommended: Google Chrome Version 52.X and later.