

DATASHEET

# Rocket<sup>®</sup> TRUfusion<sup>™</sup> Enterprise Windchill Integration

## Improve competitiveness and reduce risk with PDX/PLM integration

While many organizations have invested in automated product lifecycle management (PLM) solutions like PTC Windchill<sup>®</sup>, their approaches to sharing product data often remain manual. This is inefficient, error-prone, and risky on multiple levels. Rocket<sup>®</sup> TRUfusion<sup>™</sup> Enterprise and Windchill work together to create an accurate, secure, and efficient way to exchange sensitive product data with customers and partners. Engineering teams can stop wasting precious hours on manual exchanges, freeing up their time and talent for developing new IP. TRUfusion Enterprise eliminates costly, disruptive mistakes—like sending the wrong files to the wrong people in the wrong formats. And with fewer human errors in the mix, you can reduce the risk to your IP and improve the competitive differentiation and revenue it provides, as well as decrease your potential for legal exposure.

### Product benefit list

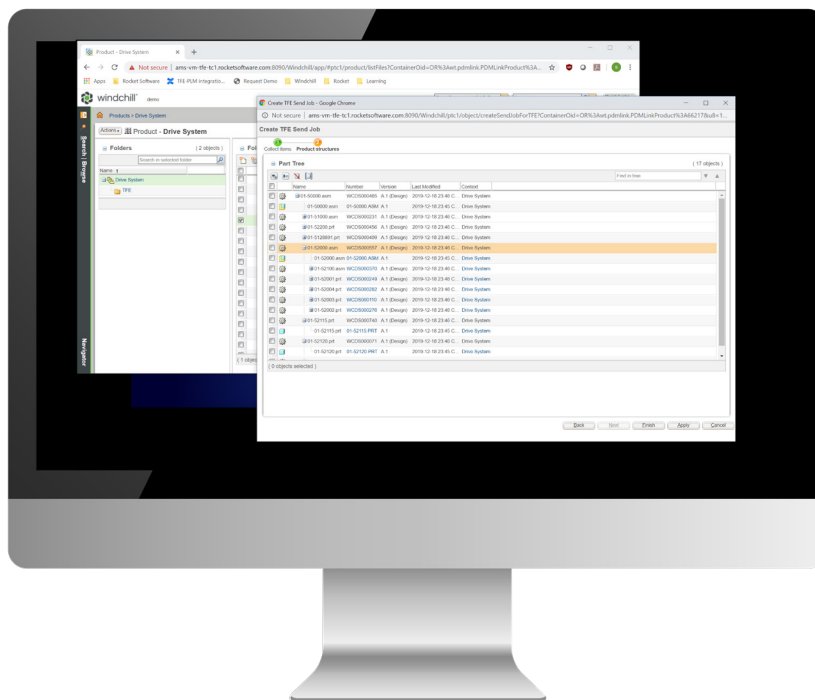
- Standardize and secure CAD and other product data exchange from Windchill
- Boost engineering productivity by reducing data-exchange time by 90% or more
- Improve product quality and minimize mistakes
- Lower your TCO over in-house or competitive solutions

# Standardize and secure CAD and other product data exchanges from Windchill

Rocket TRUFusion Enterprise and Windchill work together out of the box to provide secure, end-to-end product data exchange with customers, partners, and remote sites. TRUFusion Enterprise uses Windchill role and access configurations to secure your IP during the exchange workflow and extends that security into the product data exchange (PDX) process. The resulting solution meets the specific technical requirements on both sides of every PDX transaction. It imports/exports data into Windchill and maps attributes and naming conventions between CAD and PLM systems to convert between different data models, with the ability to enforce compliance with OEM/Tier 1 mandates in industries such as automotive, transportation, and aerospace. With the combined security of Windchill and TRUFusion Enterprise, you can collaborate and exchange sensitive data—whether yours or your customers’—with confidence, every time.

## Boost engineering productivity by reducing data-exchange time by 90% or more

With this integrated solution, manufacturers can save thousands of man-hours per year through more efficient data exchange. They’ll also accrue dividends far into the future by extending the PLM discipline to PDX collaboration and coordination. TRUFusion Enterprise automates and documents the entire PDX process, archives sent data packages, and even provides a full audit trail. With a “single source of truth” for product data exchange, everyone across the supply chain is more productive and in sync.



By automating labor-intensive and error-prone manual steps, many manufacturers save thousands of hours per year.



## Key Capabilities

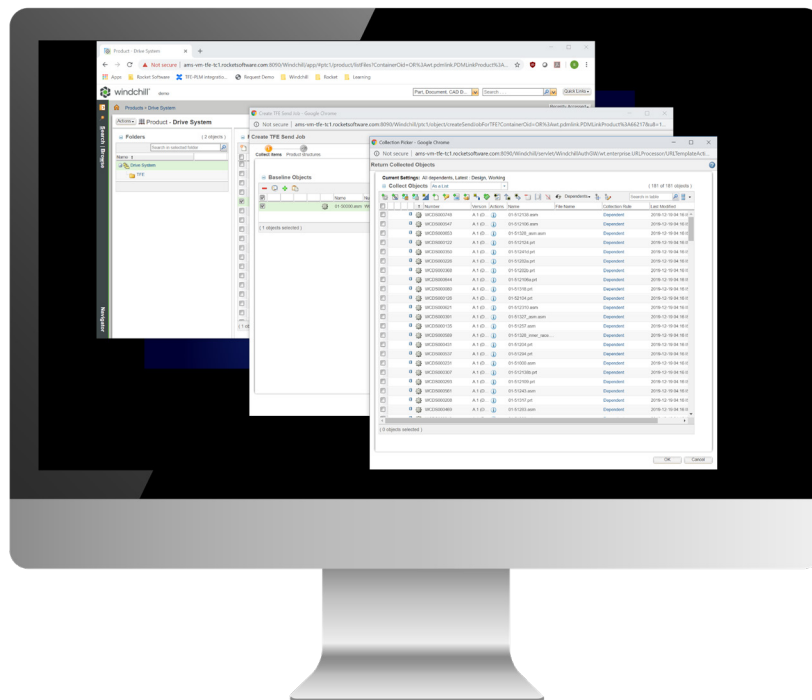
TRUfusion Enterprise allows engineers to save time by automating the standard product data exchange process, including renaming, quality checks, translations, encryptions, compression/decompression, physical transfer and archiving. With a Windchill integration, engineers can also:

### Export

- Search and select CAD data and other relevant documents within Windchill and outside the PLM environment, and customize what's included in the export job for the intended partner to receive.
- Automate export job data naming, packaging and delivery. Packages can include native CAD files (Creo, NX, CATIA v5), neutral files (STEP, IGES, JT) and/or other documents (PDF, MS-Office).
- Control which data can or cannot be exported considering security classification, ownership, and life-cycle status by leveraging how Windchill is configured.

### Import

- Reconcile between newly received data and what is already in Windchill to identify the delta.
- Allow the user to choose what data to import and decide whether it replaces what's in Windchill or creates a new version for what has been updated.
- Automatically load the CAD and related documents into Windchill correctly for immediate use.



It's easy to send CAD data and related documents safely and securely to your development partners from Windchill with TRUfusion Enterprise.

# Supported CAD systems, PLM systems, and standards

Rocket TRUfusion Enterprise supports or integrates with many CAD and PLM standards and systems out of the box, and Rocket monitors and stays in sync with all the latest releases of supported systems. Rocket can help you build efficient file-transfer integrations between different product design authoring and data management software, including in-house-developed software.

## Standard integrations include:

### PLM systems and integration platforms

- T-Systems COMPDM
- Siemens Teamcenter®
- PTC Windchill®
- Aras Innovator®
- Dassault Systèmes 3DEXPERIENCE® Platform (ENOVIA)
- CONTACT Software CIM Database PLM
- SAP® PLM

## CAD system translators to enable translations into other formats, including:

- STEP, IGES, DXF, STL, JT, Parasolid and PDF/3DPDF
- Dassault Systèmes CATIA™ v5
- PTC Creo®
- Siemens NX™

### Third-party direct CAD-to-CAD translators

- CoreTechnologie 3D\_Evolution®
- Elysium ASFALIS
- Theorem Solutions CADverter
- Theorem Solutions Publish 3D
- T-Systems COM/FOX

### CAD quality checkers

- Heidelberg® CAx Quality Manager (HQM)
- TechniaTranscat LiteComply
- Technia Q-CheckerSecure File Exchange Capabilities
- OFTP V1 and 2 plus ENGDAT and ENGPART
- TRUfusion Enterprise Portal, for on-premises capability
- TRUexchange, for SaaS/cloud capability

© Rocket Software, Inc. or its affiliates 1990-2020. All rights reserved. Rocket and the Rocket Software logos are registered trademarks of Rocket Software, Inc. Other product and service names might be trademarks of Rocket Software or its affiliates.

RS DS TRUfusion Windchill April 2020 v4