

Rocket Aldon[®] Lifecycle Manager (IBM i Edition)

Maximize efficiency with automated end-to-end ALM and DevOps



Rocket[®] Application Lifecycle Management (ALM) and DevOps solutions simplify and automate every aspect of the software development and delivery process.

From gathering, routing, and prioritizing change requests to the deployment and promotion of application releases and updates, Rocket Aldon[®] Lifecycle Manager (IBM[®] i Edition, LMi) helps reduce errors and improve productivity, facilitates collaboration, and simplifies audit compliance with regulatory and best-practice standards.

With Rocket Aldon LMi, your change management and deployment processes become predictable, scalable, and repeatable.

Product benefit list

- Streamline the entire development process, boosting productivity and efficiency
- Simplify the preparation process for documenting compliance
- Reduce the complexity of the deployment process
- Ensure that your DevOps workflow processes are enforced
- Increase software quality levels

“

When the SOX (Sarbanes-Oxley) auditors heard we had Rocket Aldon LMi in place, they checked off the first 10 boxes, knowing we were already in accordance. I think that says it all.

—Glen Thompson, Senior Manager,
Big 5 Sporting Goods

”

Streamline your entire development process, boosting productivity and efficiency

Rocket Aldon LMi streamlines your entire development workflow and establishes repeatable, automated change management and compliance processes. It helps you improve productivity and efficiency by automating and managing everything that happens in the software development lifecycle from the time a change request is received until the time the solution is delivered into production.

Simplify audit preparation and compliance documentation

With Aldon LMi, IT teams can quickly and consistently adhere to internal audit and regulatory compliance standards in parallel with the software development process. They can configure system-enforced process flows to ensure that components automatically pass through the defined phases, and that company policies and government regulations are enforced.

Highly granular configurations for user permissions and development environments support segregation of duties throughout the software development lifecycle. Aldon LMi reduces the administrative burden on developers by logging all actions and automating compliance requirements. This lets IT staff focus on what they do best: developing quality applications to solve customer problems.

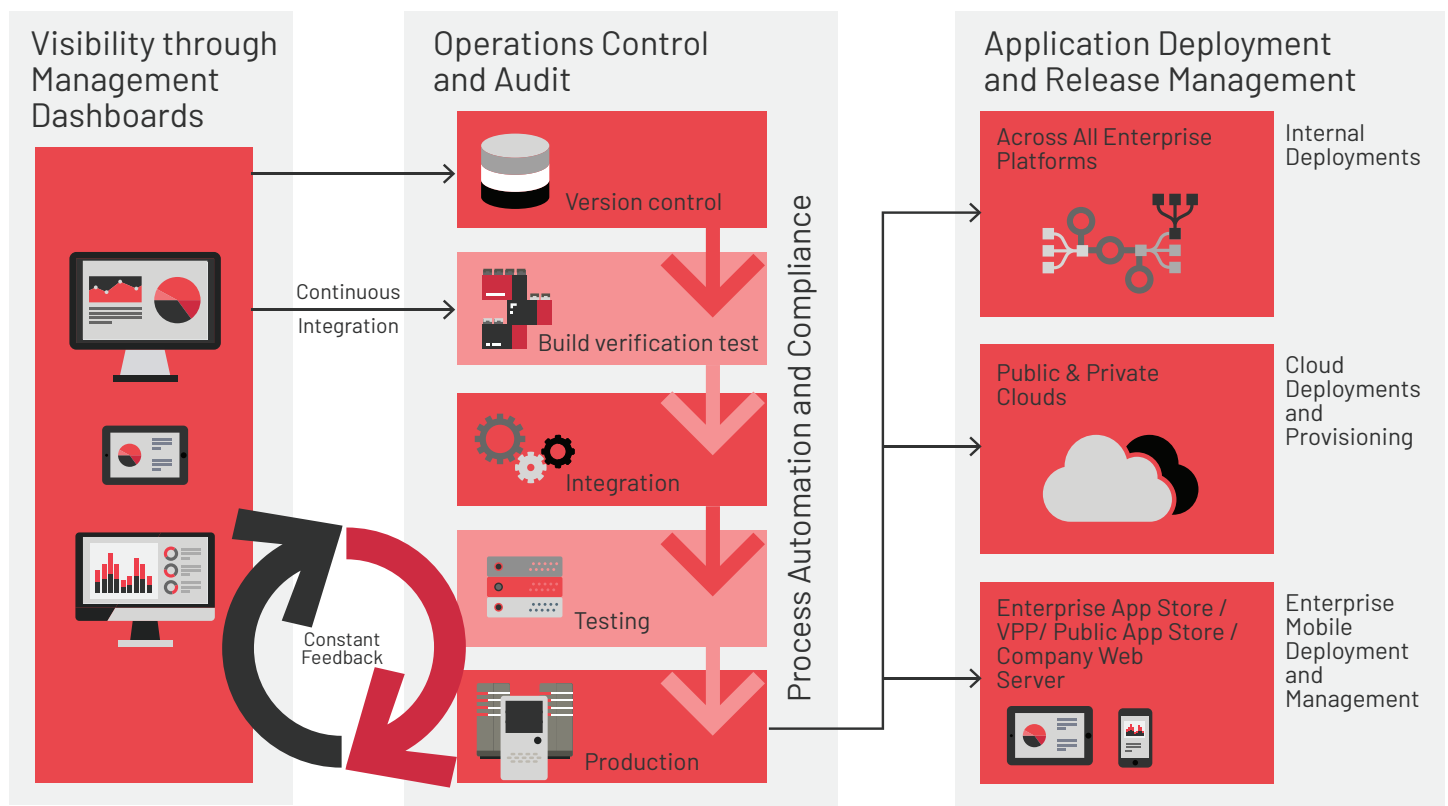


Figure 1: Rocket Application Lifecycle Management solutions help IT teams manage and automate everything that happens from the time the need for a software change arises to the time a solution is delivered and verified.



Reduce the complexity of your deployment process

Deployment of applications and files is usually a manual—and error-prone—process. Rocket Aldon LMi works with the Rocket Aldon® Deployment Manager module at each stage of the lifecycle to gather, package, distribute, and install application components. The management console lets users carefully track and govern distributed packages.

The “Work with Objects by Release” panel displays a list of objects associated with an application release, in a format familiar to developers. The list shows all objects from all libraries included in the application, eliminating the need to go to each library and source file individually. Comprehensive status information is shown for each object on a single line.

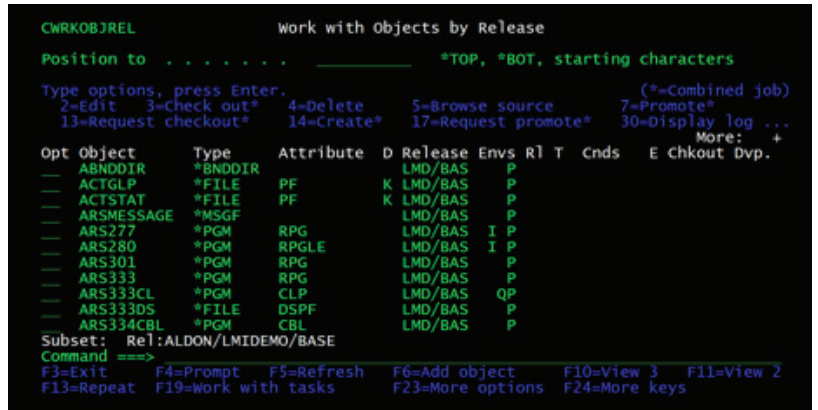


Figure 2: The Work with Objects by Release panel

The Ops Portal provides real-time deployment monitoring, backout functionality, and the ability to view reports on target systems. It also lets project managers and other non-technical users hold roles independent of your development team, enforcing separation of duties.

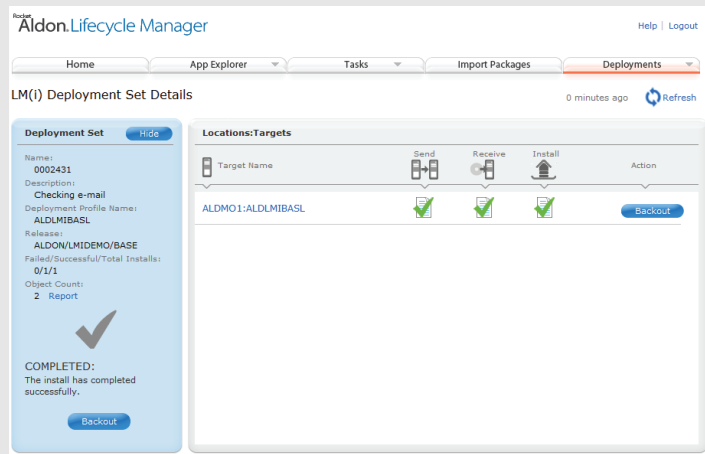


Figure 3: The Ops Portal lets authorized users perform key ALM and DevOps tasks in a user-friendly environment

It's easy to show exactly who has authority to perform specific operations, simplifying preparation time for documenting compliance.

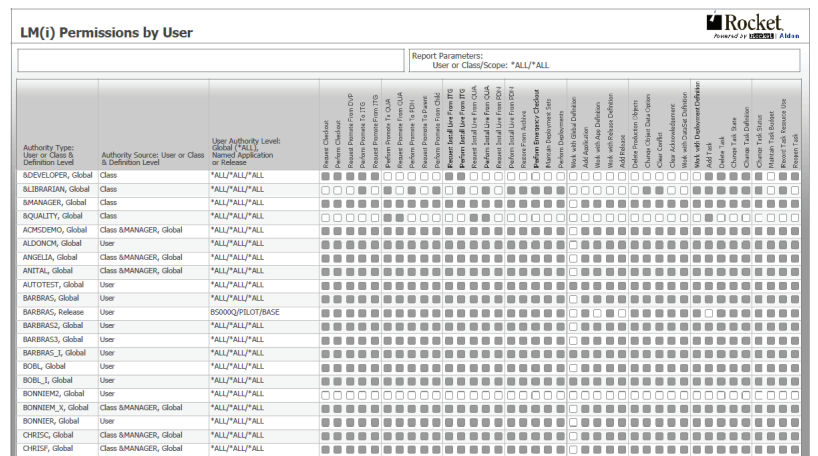


Figure 4: User access and permissions is easy to document



Rocket Aldon® Lifecycle Manager (IBM® i Edition)

Development and Deployment Manager Server

- IBM i V7R1 or higher

Supported Integrated Development Environments (IDEs) and Applications

- Git
- IBM Rational Developer for i/Power Systems
- CA 2E
- Eclipse
- LANSA
- AS/SET
- X-Analysis
- Oracle JD Edwards
- JIRA

Rocket Aldon Family

Rocket Aldon Lifecycle Manager (IBM i Edition) belongs to our Rocket family of ALM and DevOps solutions and modules. In addition to helping protect and extend your IBM i investment, the Rocket family also includes enhancement modules and solutions for other common enterprise platforms, including:

Rocket Aldon® Lifecycle Manager (Enterprise Edition)

Bring enterprise Application Lifecycle Management and DevOps automation to multiplatform development environment, including windows, Linux/Unix, and mobile.

Rocket Aldon® Lifecycle Manager (MultiValue Edition)

Bring enterprise Application Lifecycle Management and DevOps automation and comprehensive support to Rocket D3®, UniVerse, and UniData® MultiValue database users.

Rocket Aldon® Community Manager

Unify your service desk with change management and requirements management using this IT workflow automation solution

Rocket Aldon® Deployment Manager (module)

Automatically package and distribute application components or content files to designated targets. Aldon Deployment Manager is automatically included with both Lifecycle Manager IBM i and Enterprise editions

Rocket Aldon® Lifecycle Manager Ops Portal (module)

Provide the convenience of anytime, anywhere access from mobile devices, letting users monitor and manage change management tasks, including promotions and deployments from mobile devices

Rocket Aldon® Report Manager (module)

Simplify audit preparation with predefined web-based reports using this automated reporting solution. Aldon Report Manager is automatically included with both Lifecycle Manager IBM i and Enterprise editions.