



Rocket® TRUeurex-c

Multi protocol and multi network communication solution for managed file transfer (MFT)

Do You Need to:

Gain the competitive advantages of managed file transfer (MFT) using a real 'out-of-the-box' solution?

Ensure maximum security of your technical and commercial data?

Have a clear view on your company's data exchange processes?

Leverage up-to-date technologies like OFTP2 or AS2?

Use differing hardware and operating system platforms in multi-user environments?

Are You Looking to:

- ❖ Consolidate data among various internal communication systems using one communication solution for all users and departments?
- ❖ Quickly, easily and securely transfer large amounts of data simultaneously?
- ❖ Automate B2B/EDI data exchange between your in-house applications and your business partners?
- ❖ Integrate data exchange with your existing ERP and PLM systems' business process?

Rocket®TRUeurex-c™ is a high capacity communications system that enables seamless and integrated file transfer by providing the ability to manage, control and automate the transfer of engineering, product, and supplier technical data such as CAD, CAM and PLM as well as the exchange of commercial/logistic business data (EDI). A multi-protocol and multinetwork solution for Managed File Transfer, TRUeurex-c is used by more than 2,000 global companies in a variety of industries. Ensuring fast and secure data exchange, TRUeurex-c is OFTP2 and AS2 certified. TRUeurex-c provides seamless integration with your existing ERP or PLM system(s) and flexibility for multiple hardware and software environments. It also accommodates multiple EDI formats, communication standards and message types. Providing significant cost savings and increased efficiency, TRUeurex-c has comprehensive monitoring and reporting features and an easily navigated user interface which improves visibility of data across existing business applications.

Electronic Data Interchange Means Cost Savings and Efficiency

Exchanging business data electronically and automatically has crucial advantages: significantly less errors due to replacing manual data entry and greatly reduced cycle times supporting just-in-time production, in addition to higher availability and visibility of data across existing business applications. As a result, companies using EDI procedures for business data exchange with partners and customers realize significant sourcing and procurement cost savings as well as verifiable increased efficiency.

Ensure the Advantages of Efficient and Cost-Effective Managed File Transfer

TRUeurex-c is a well-established client/server communication solution that seamlessly integrates into existing IT environments and allows for the parallel use of various hardware and operating system platforms in multi-user settings. TRUeurex-c supports all crucial communication channels (e.g. OFTP, OFTP2, X.400, AS2, FTP and GXS) and message standards (e.g. VDA, UN/EDIFACT, ANSI, ASC, X12 or XML) as well as CAD/CAM file exchange therefore affording more efficient engineering collaboration processes between producers, development partners and suppliers.

TRUeurex-c also features an integrated Clearing Center component that routes incoming messages directly to external partners at a customer's option which better facilitates overall B2B communication. It also supports the use of different identification data, to be able to take charge of the communication for different clients. Another important feature is the EDI dashboard which allows users full visibility on data transactions.

Secure Reliable Data Communication

TRUeurex-c capabilities are designed for:

- ❖ Enabling a secure and reliable data communication between business partners
- ❖ Realizing significant data exchange and administrative cost-savings
- ❖ Accelerating the speed of large file transfer via the Internet
- ❖ Reaching maximum performance by using several transaction channels and supporting current industry standards

Special Functions

- ❖ Integration into Trubiquity's data exchange management solutions for technical, commercial and logistic data exchange:
 - Rocket® TRUFusion™ Enterprise
 - Rocket® TRUFusion™ Connect
 - Rocket® TRUedx™ Enterprise
 - Rocket® TRUedx™ Connect
- ❖ Comprehensive and automatic handling of electronic data interchange with business partners for:
 - Commercial/logistic data exchange (EDI)
 - Engineering and technical data exchange (CAD/CAM/PLM)
- ❖ DMZ Proxy for highly secure communication to protect the local IT infrastructure via firewall and DMZ solutions
- ❖ Support of all OFTP2 security functions:
 - Communication and data encryption
 - Authentication
 - Signing and verification of data and message confirmation
- ❖ Integrated certification management for any internet-based protocol

Official Certifications

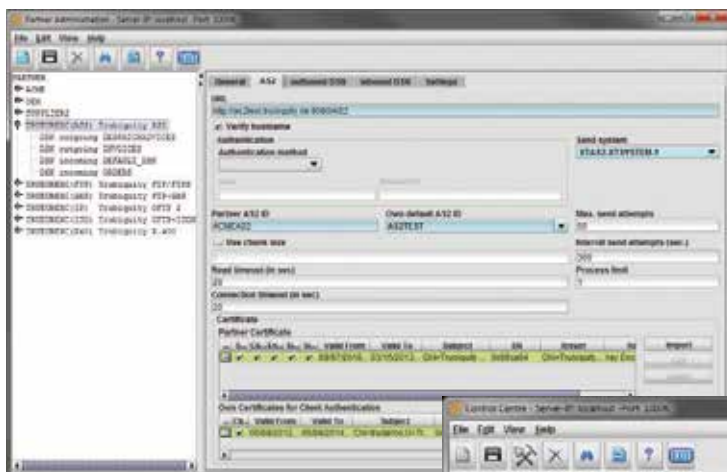
TRUeurex-c has been officially certified for:



Compliance with OFTP2 (Odette File Transfer Protocol) by the Odette Organization (Organization for Data Exchange by Transmission in Europe)



AS2-Interoperability (LEFT EDIINT Applicability Statement 2) by the Drummond Group Inc. (DGI)



Partner configuration is simplified in Rocket TRUeurex-c

ID	Transmit Time	Partner	Factory	Virtual Resource	User	Trace	Result
0	05/05/2012 - 11:53:36	SUPPLIER2	CADFILE	admin	admin	End of OFTP session with partner SUPPLIER2	SEFP received
0	05/05/2012 - 11:54:36	SUPPLIER2	CADFILE	admin	admin	Start file transfer	SEFP received
0	05/05/2012 - 11:55:36	SUPPLIER2	CADFILE	admin	admin	Start file transfer	SEFP received
0	05/05/2012 - 11:55:36	SUPPLIER2	CADFILE	admin	admin	End of OFTP session with partner OEM	SEFP received
0	05/05/2012 - 11:56:36	SUPPLIER2	CADFILE	admin	admin	End of OFTP session with partner OEM	SEFP received
0	05/05/2012 - 11:57:36	SUPPLIER2	CADFILE	admin	admin	End of OFTP session with partner OEM	SEFP received
0	05/05/2012 - 11:58:36	SUPPLIER2	CADFILE	admin	admin	End of OFTP session with partner OEM	SEFP received
0	05/05/2012 - 11:59:36	SUPPLIER2	CADFILE	admin	admin	End of OFTP session with partner OEM	SEFP received
0	05/05/2012 - 12:00:36	SUPPLIER2	CADFILE	admin	admin	End of OFTP session with partner OEM	SEFP received
0	05/05/2012 - 12:01:36	SUPPLIER2	CADFILE	admin	admin	End of OFTP session with partner OEM	SEFP received
0	05/05/2012 - 12:02:36	SUPPLIER2	CADFILE	admin	admin	End of OFTP session with partner OEM	SEFP received
0	05/05/2012 - 12:03:36	SUPPLIER2	CADFILE	admin	admin	End of OFTP session with partner OEM	SEFP received
0	05/05/2012 - 12:04:36	SUPPLIER2	CADFILE	admin	admin	End of OFTP session with partner OEM	SEFP received
0	05/05/2012 - 12:05:36	SUPPLIER2	CADFILE	admin	admin	End of OFTP session with partner OEM	SEFP received
0	05/05/2012 - 12:06:36	SUPPLIER2	CADFILE	admin	admin	End of OFTP session with partner OEM	SEFP received
0	05/05/2012 - 12:07:36	SUPPLIER2	CADFILE	admin	admin	End of OFTP session with partner OEM	SEFP received
0	05/05/2012 - 12:08:36	SUPPLIER2	CADFILE	admin	admin	End of OFTP session with partner OEM	SEFP received
0	05/05/2012 - 12:09:36	SUPPLIER2	CADFILE	admin	admin	End of OFTP session with partner OEM	SEFP received
0	05/05/2012 - 12:10:36	SUPPLIER2	CADFILE	admin	admin	End of OFTP session with partner OEM	SEFP received
0	05/05/2012 - 12:11:36	SUPPLIER2	CADFILE	admin	admin	End of OFTP session with partner OEM	SEFP received
0	05/05/2012 - 12:12:36	SUPPLIER2	CADFILE	admin	admin	End of OFTP session with partner OEM	SEFP received
0	05/05/2012 - 12:13:36	SUPPLIER2	CADFILE	admin	admin	End of OFTP session with partner OEM	SEFP received
0	05/05/2012 - 12:14:36	SUPPLIER2	CADFILE	admin	admin	End of OFTP session with partner OEM	SEFP received
0	05/05/2012 - 12:15:36	SUPPLIER2	CADFILE	admin	admin	End of OFTP session with partner OEM	SEFP received

Rocket TRUeurex-c has an easy to manage dashboard that facilitates partner communication

Supported Communications Protocols and Networks

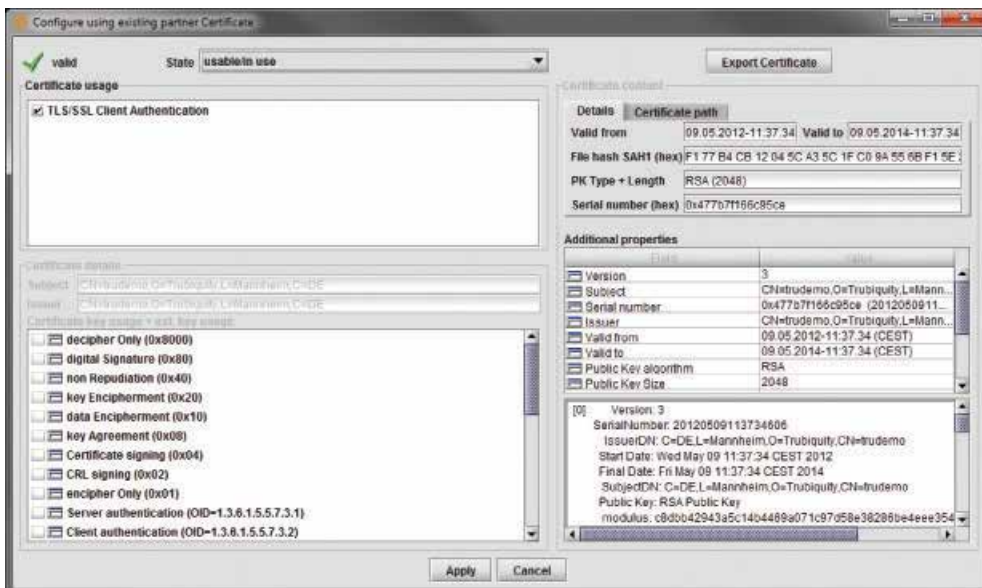
	OFTP/OFTP2	AS2	X.400	FTP/FTPS	GXS (FTPS)
ISDN	✓		✓		
X.25 over the ISDN-D Channel (X.31D)	✓				
X.24 (native) via X.21	✓				
ENX/ANX	✓	✓		✓	
Internet	✓	✓	✓	✓	✓
Server	✓	✓		✓	
Client	✓	✓	✓	✓	✓

Supported Platforms

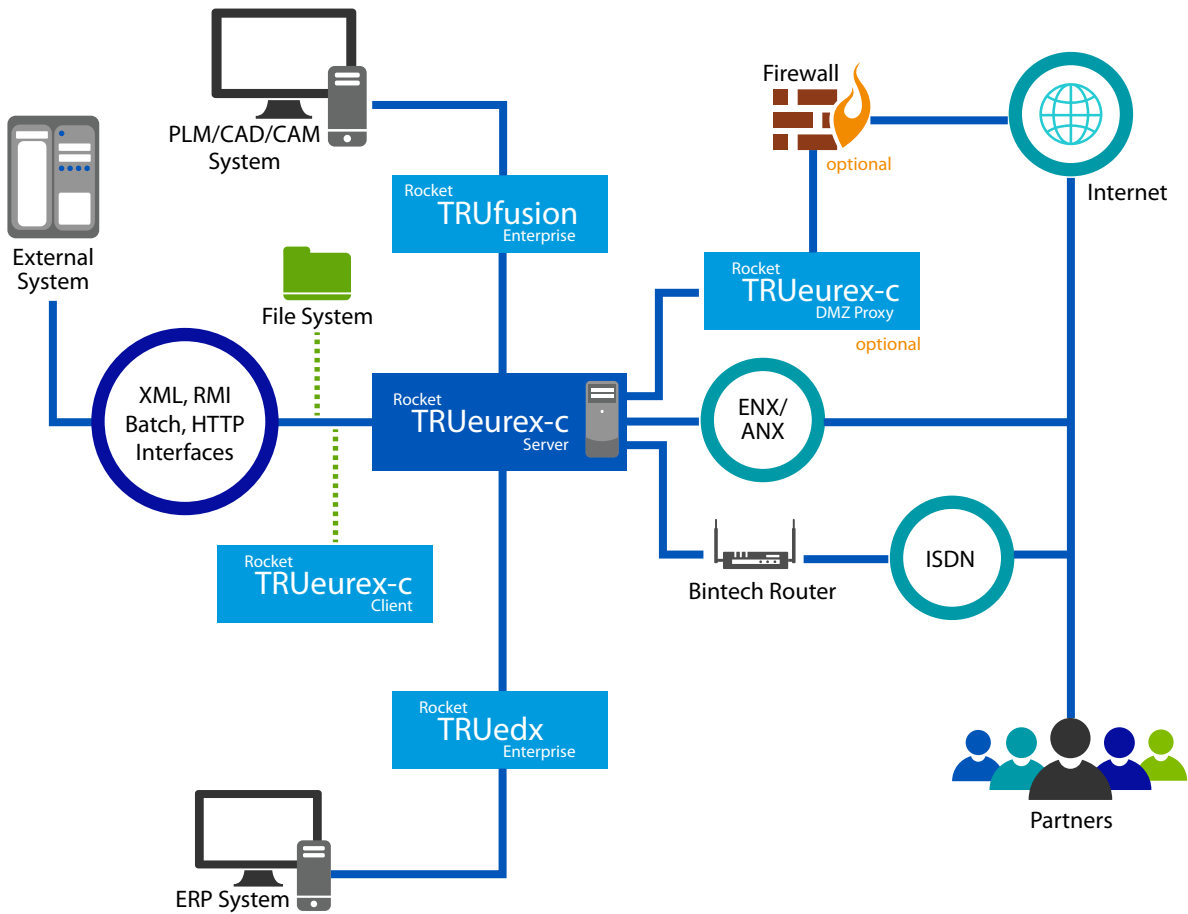
TRUeurex-c is available for the following operating systems:

- ❖ Windows XP up to Windows Server 2008
- ❖ IBM iSeries (AS/400)
- ❖ Linux (e.g.) SuSE, Red Hat, / Unix (e.g. IBM AIX, Oracle/Sun Solaris, ...

The system is based on a client/server architecture that supports various computer environments (e.g.) Windows Client, AIX/Unix Server, Linux DMZ Proxy ...



Rocket TRUeurex-c features a simple and fully integrated Certificate Management function.



Rocket TRUeurex-c: Integration Tools for Partner Products

TRUeurex-c provides multiple interfaces for integration into the various system environments of partners' products.

- ❖ Send/receive administration and partner configuration
- ❖ Batch interfaces and Java RMI interfaces (API)

To learn more about the Rocket TRUeurex-c solution or other Rocket data exchange, process integration and automation solutions, visit: www.rocketsoftware.com.

- www.rocketsoftware.com
- info@rocketsoftware.com
- twitter.com/rocket
- www.youtube.com/rocketsource
- www.linkedin.com/company/rocket-software
- plus.google.com/u/0/104109093105646534918

