



Rocket® R/Link

for Rocket's MultiValue Databases
Universal File Access for the Enterprise

Integration

API allows you to integrate secure file sharing and file-oriented tasks into your existing MultiValue application, running on Rocket UniVerse, Rocket UniData, Rocket D3 or Rocket mvBase.

Security

All files are secured in flight and at rest using your existing network security standards and LDAP or Active Directory permissions to ensure total security and activity transparency.

Mobile

Access R/Link from any device with a browser or leverage the mobile client to make your application and information accessible from anywhere at any time.

Transfer, Share, and Collaborate Inside and Outside the Enterprise

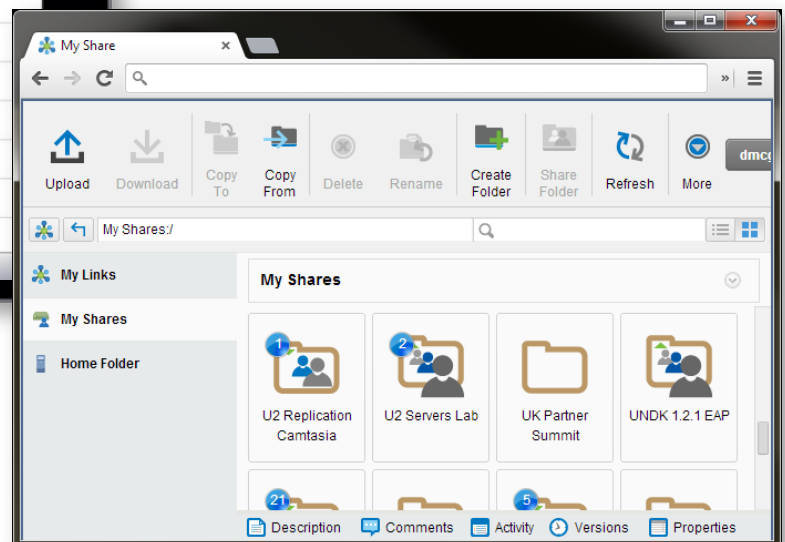
File-oriented activities on structured and unstructured data have grown exponentially over the past few years. Using smart devices and cloud services, mobile workers can access and move corporate data at their convenience, but sometimes outside of corporate IT's control. Regulatory pressures compel IT departments to control access to, safeguard, track the movement of, and control the lifecycle of information. Rocket® R/Link provides a convenient, secure environment for users who need access to corporate data and to share it with others inside and outside the enterprise. Users can use a browser on any device and avoid cumbersome VPN connections.

Seamless Integration with Your Application

When the success of an application depends on the flow of information, doesn't it make sense to have that information as secure as possible? R/Link leverages a RESTful API to minimize development while maximizing security and functionality. Use R/Link's API to integrate secure file sharing and file-oriented tasks into your existing MultiValue application running on UniVerse, UniData, D3 or mvBase. Increase security and auditability while streamlining processes via automation and flexible user permissions, without spending time and money on costly development.

Mobile Enablement

Mobile workers who use a variety of devices throughout the day expect to access data from whichever device is handy – PC, Mac, tablet, smartphone, or terminal session. R/Link provides access to network servers, facilitates sharing of files/folders so that teams can collaborate, and synchronizes data between devices, from any device, at any time.



Eliminate FTP

Desktop FTP clients are notorious for allowing information to leave from the enterprise because users can transfer information without any control, oversight, or visibility. R/Link centralizes all FTP activity by removing it from the desktop and providing a simple browser interface. All transfers are redirected through the R/Link server to the destination FTP server. Users can automate repeated transfers and gain improved productivity and auditability. R/Link can also eliminate the need for FTP clients.

Security, Control, and Visibility

Regulatory requirements dictate controlling, monitoring, securing and logging all file movement. R/Link provides detailed activity logging that is available to the administrator and the user, encrypted transfer and storage, and granular access control that can be configured inside R/Link or the LDAP/Active Directory.

Product Features

RESTful API Integration	<ul style="list-style-type: none"> ❖ Easily integrate R/Link into your MultiValue application running on UniVerse, UniData, D3, or mvBase to add automation and security to file-oriented tasks. 	<ul style="list-style-type: none"> ❖ Leverage the RESTful API to build new applications that access R/Link.
Secure File Sharing & Synchronization	<ul style="list-style-type: none"> ❖ Provide a premises-based solution that keeps your data on your network using your security ❖ Combine robust administrative control, complete security and auditability, seamless backend integration, and an intuitive, 	<ul style="list-style-type: none"> non-technical user interface into a single solution ❖ Keep all of your devices up to date and all of your files available to you anywhere, anytime through R/Link's synching capabilities
FTP Replacement	<ul style="list-style-type: none"> ❖ Eliminate FTP clients from users' desktops, replacing them with a browser-based interface. ❖ Block FTP transfers from all machines except the R/Link server, then drive all FTP transfers from users through the R/Link server to 	<ul style="list-style-type: none"> ensure complete control and activity transparency. ❖ Configure R/Link as a front-end, browser interface for any FTP or file server. ❖ Centralize automated FTP transfers.
Managed & Secured File Transfer	<ul style="list-style-type: none"> ❖ Use industry-standard encryption and security protocols to encrypt files. ❖ Automate and schedule regular file transfer tasks using the R/Link My Tasks feature. ❖ Configure file lifecycle to archive files that 	<ul style="list-style-type: none"> have not been accessed in a specified period of time. ❖ Configure custom notifications to alert you in real time when transfers fail.
Mobile & Browser Access to File Servers	<ul style="list-style-type: none"> ❖ Access files on network servers from any mobile device and move files to the My Shares folder to share them with others. ❖ Eliminate cumbersome VPN clients. 	<ul style="list-style-type: none"> ❖ Move files between servers without downloading them first, enabling high speed transfers.
Browser-Based Administration	<ul style="list-style-type: none"> ❖ Control permissions, define user settings, and monitor transfer activity from any browser-based device. 	

Product Features

Comprehensive Logging

- ❖ Track and search all logged activity by User, Source IP, Date, and Time from any browser-based service.
- ❖ Store all logs and user information in a SQL server for easy reporting and integration.
- ❖ Configure administrator and user logs so that users can monitor their individual activity streams.

Social & Collaboration Tools

- ❖ Increase collaboration and transparency by using file locking and versioning, file folder comments, discussion threads, and file folder activity streams

Flexible Licensing

- ❖ Administrator can create internal users or import them from the LDAP directory or Microsoft Active Directory.
- ❖ External users only participate in folders and files that an internal user shares with them.
- ❖ Users can create folders, augment content, and invite external users.
- ❖ Licensing is done on a 10:1 basis, external to internal - a single license can enable one internal user or up to 10 external users.

