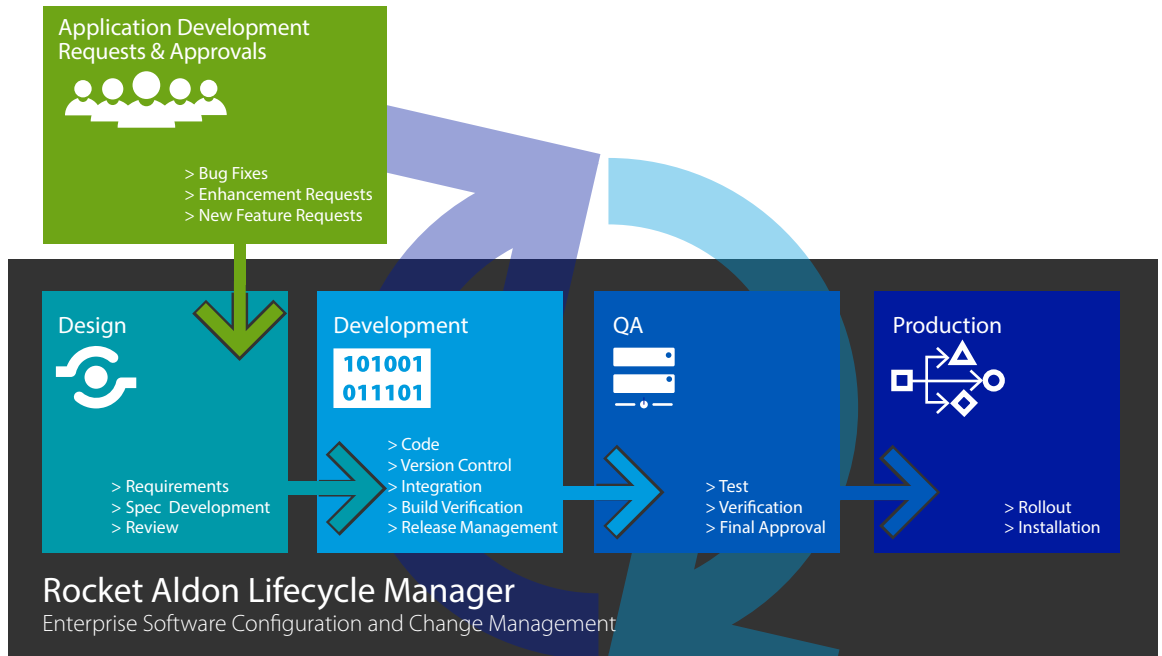


# Rocket® Aldon Lifecycle Manager for U2

Enterprise Application Lifecycle Management

- Built-in support for UniData and UniVerse, for items such as Programs, Data Dictionary Items, and Schema Changes
- Support for editors such as wIntegrate, AE, ED, and for the U2 development products, SB+ and SB/XA
- Simplifies audit compliance
- Facilitates task and backlog management
- Enforces quality standards
- Secures and manages access to software assets
- Shows progress of all software development and deployments
- Automates and manages builds and releases
- Deploys complex, multi-platform applications
- Supports development tool plugins



## Total Software Change Management From Change Requests to Production

Rocket® Aldon Lifecycle Manager (LM) for U2 provides advanced application lifecycle management with comprehensive support for U2 users. Rocket Aldon LM is a software configuration and change management solution for enterprise applications that supports Windows, Solaris, AIX, Linux, and U2. Our software automates and streamlines the entire software development and release process, providing the visibility and control required in an enterprise environment—increasing developer productivity, improving code quality, and meeting regulatory and best practices requirements.

With Rocket Aldon LM, you can accelerate and automatically track all your software development and maintenance workflows from design to production. Our solution keeps you in control while increasing your developers' productivity so that you can deploy IT projects on time and within budget. Its comprehensive activity tracking and performance reporting provide management with the input and feedback needed to optimize IT's responsiveness.

From the moment a change is requested or an enhancement is filed, you are in total control of your application development lifecycle and software change management process. What's more, our software gives you a way to easily keep compliant, from user request through release to production, so passing an IT audit is never a problem.



## Enforces and Streamlines Compliance Requirements

Compliance rules, approval requirements and activity logging standards can be built right into the automated workflow. That way, Rocket Aldon LM enables managers to quickly and consistently respond to internal regulations and legislated standards in parallel with the software development process, making audits easy and painless. For each application, management can define a process to ensure that components automatically pass through the defined phases, and that company policies and government regulations are enforced. Our software reduces the administrative burden on developers by automating compliance requirements so that developers are not delayed or distracted by mundane tasks.

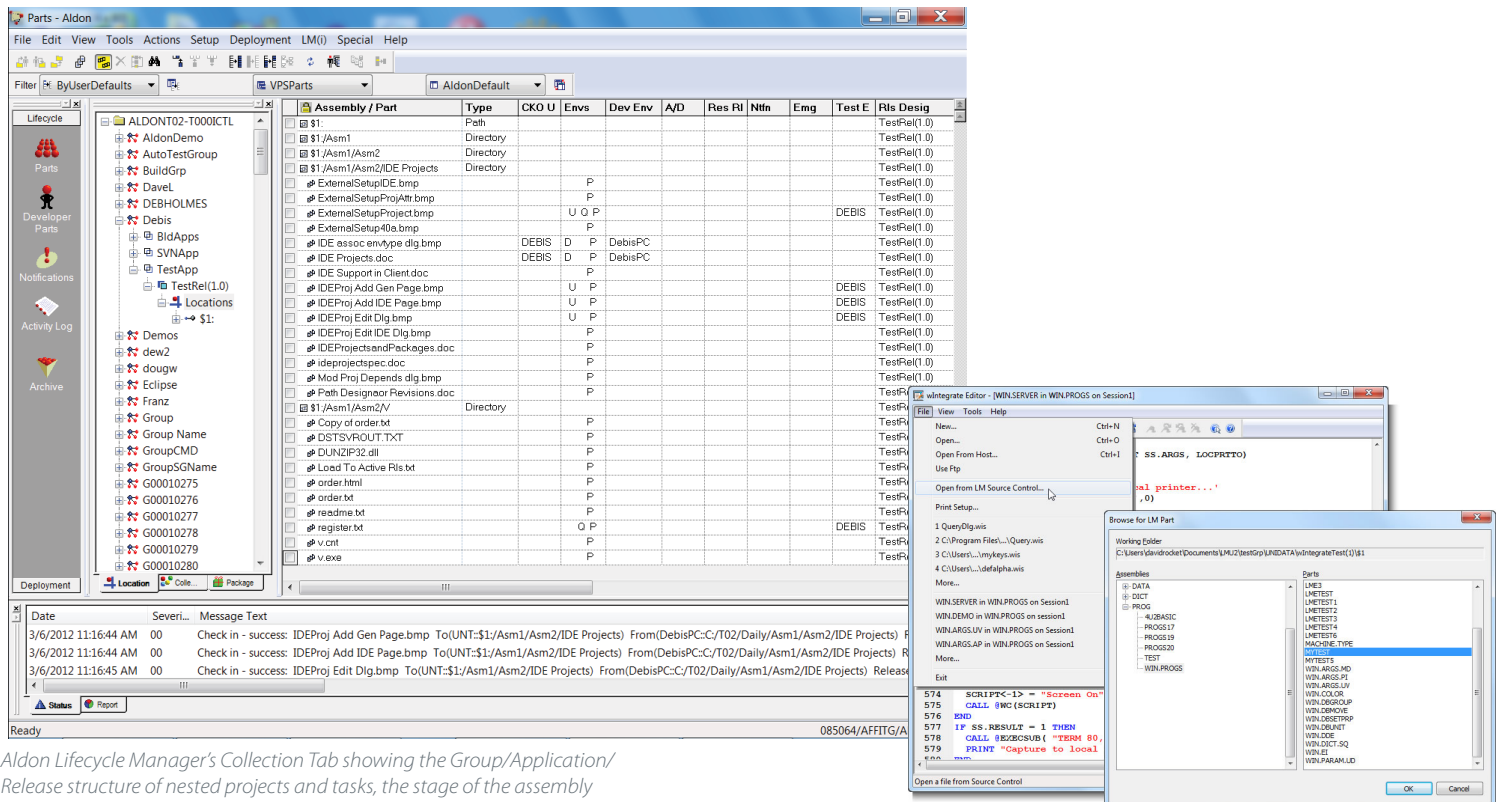
## Automates Development Processes, Increases Quality Levels

Rocket Aldon LM streamlines the application development process to improve code quality. The

automatic promotion and deployment process eliminates the manual movement of programs, procs, paragraphs, dictionary and data records to remote machines and accounts, virtually eliminating the chance for errors. Rocket Aldon Lifecycle Manager will even create archived copies if desired, making backouts simple. The promotion process can be controlled via role-based security, ensuring that code can't be promoted without the proper authorization.

## Supports Your Preferred Development Tools

Programmers can access the programs, and records they need directly via U2 development tools like wIntegrate, AE, ED and VI or from TCL/ECL. Right from the tools, they can perform checkouts, checkins, promotions and deployments. They can associate the work they are doing with tasks and provide detailed information about the work they have performed.



Aldon Lifecycle Manager's Collection Tab showing the Group/Application/Release structure of nested projects and tasks, the stage of the assembly within the application's lifecycle, and a log of the all activities as they occur in the Status tab.

# How

## How Rocket Aldon LM works.

After all applications, code, dictionary items, files and projects are placed in Rocket Aldon Lifecycle Manager's central repository, our software tracks the status at all times. For software development, when you check something out, it can be tracked throughout its entire lifecycle. With the associated assigned permissions, you can promote application components throughout the development lifecycle (i.e. development, testing, production, etc.) and Rocket Aldon LM will track it. In addition, the application components can be automatically deployed at each stage of the lifecycle. At each stage, our software logs all activities and assures only approved users perform any operation.

Windows developers can checkout and check-in their files directly via Visual Studio while Java developers can do the same from Eclipse based IDEs.

With Rocket Aldon LM, users can specify and define multiple releases and manage all stages of the development lifecycle. Rocket LM with SB/XA helps administrators to move changes between environments and to manage multiple versions of the program screen, or paragraph available so that they can see each change and compare across versions.

## Easily Monitors and Manages Multiple, Geographically Distributed and Outsourced Development Teams

Our software enables fine-grained control of geographically distributed and outsourced development teams. Specific releases and modules can be easily created for use by distinct teams, limiting the accessibility of code to outside teams. Outsourced development is relegated to its own

environment, separated from in-house development, to be merged when appropriate. Unauthorized access to the code base is prevented through role-based security. Rocket Aldon LM provides the control and management essential for successful distributed development.

## Simplifies Multiple Releases

Coordinating the development of multiple releases simultaneously is a common, but complex, task. Our software simplifies the process by allowing users to specify and define multiple releases through its release management capabilities. Rocket Aldon LM can automatically synchronize changes between these releases, eliminating the errors inherent with manual processes.

## Secures Software Assets

Rocket Aldon Lifecycle Manager's security features provide powerful authorization and authentication. Users are grouped into roles—such as engineers, development managers, or senior IT managers—and are granted varying levels of authority, providing more control over access usage than ever before.

## Manages Multi-platform Development

Rocket Aldon Lifecycle Manager's flexible architecture supports even the most complex environments. Aldon LM provides automation, management, and visibility of development across all platforms. Since changes to multiple environments can be included in a single operation, updates can be synchronized across platforms and technologies. Development teams can focus on project deliverables, avoid unnecessary disruption, and continue to operate within their preferred environments.

## Automates Deployment

Deployment of applications and files is usually a manual process that can be prone to error. Rocket Aldon Lifecycle Manager works with Rocket Aldon Deployment Manager at each stage of the lifecycle to gather, package, distribute, and install application components. A management console allows users to carefully track and govern distributed packages. For multi-platform distributed environments, Aldon Deployment Manager eliminates the need for complex scripts, dramatically simplifying deployment.

## Technical Specifications

**LM e GUI Client requirements** ❖ Windows 7 or 8

**U2 Client requirements** ❖ Linux  
AIX  
Solaris  
HP-UX (coming soon)  
Windows (coming soon)

### Supported Rocket U2 Software

- ❖ Suggested version of Rocket U2 Servers:
  - Rocket UniData 7.2/7.3 and higher
  - Rocket UniVerse 11.1/11.2 and higher
- ❖ Rocket U2 Tools
  - Rocket wIntegrate 6.3.4 and higher
  - Rocket SB/XA or SB+ 6.3 and higher

- LM e Server requirements** ❖ For Linux Operating Systems
- Red Hat Enterprise Linux or CentOS Version 5.9 or higher; 64-bit mode
  - Red Hat Enterprise Linux or CentOS Version 6.x; 64-bit mode
  - IBM Java Software Development Kit 1.7.0 (installed with the package)
  - Apache Software Foundation Jakarta Tomcat Version (installed with the package)

-  [www.rocketsoftware.com](http://www.rocketsoftware.com)
-  [info@rocketsoftware.com](mailto:info@rocketsoftware.com)
-  [twitter.com/rocket](https://twitter.com/rocket)
-  [www.youtube.com/rocketsource](http://www.youtube.com/rocketsource)
-  [www.linkedin.com/company/rocket-software](http://www.linkedin.com/company/rocket-software)
-  [plus.google.com/u/0/104109093105646534918](https://plus.google.com/u/0/104109093105646534918)

