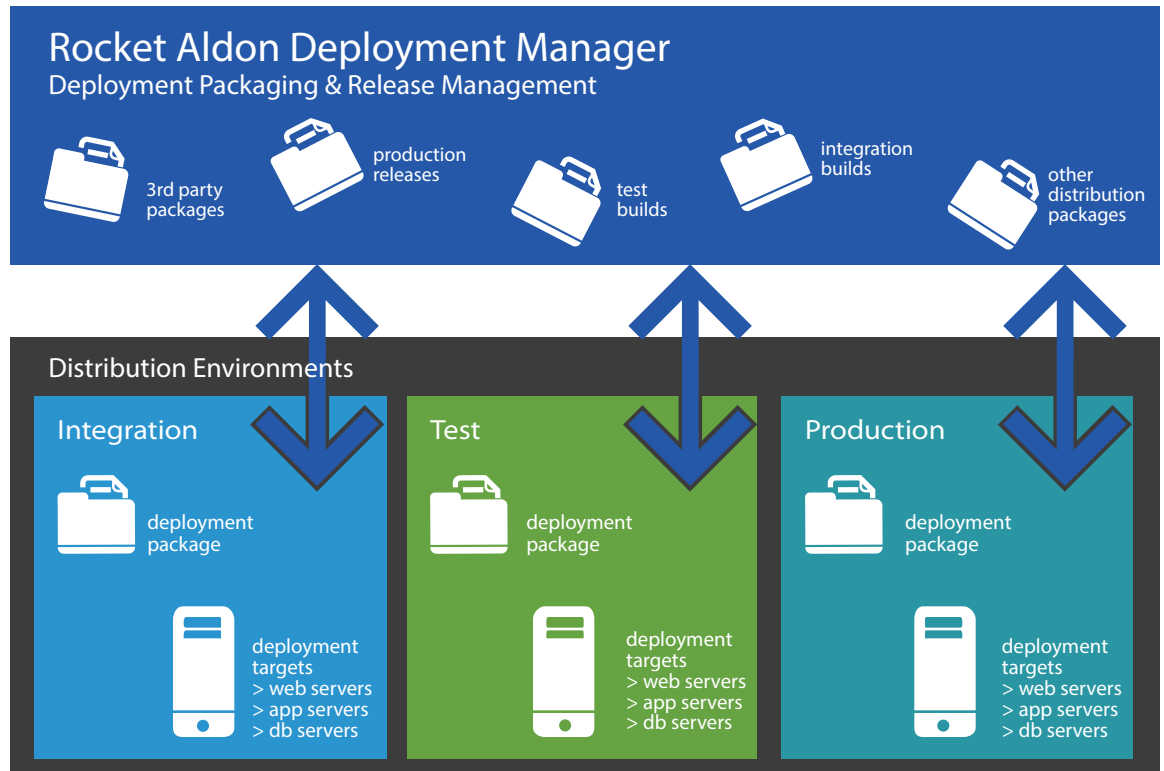




Rocket® Aldon

Deployment Manager - Build. Release. Deploy.

- Automates distribution and release management
- Manages complex multi-platform environments
- Automates monitoring
- Provides secure and consistent distribution
- Provides a comprehensive audit trail
- Provides painless re-deployment and software rollouts



Distribution Packaging and Release Management

Rocket® Aldon Deployment Manager (DM) automatically packages and distributes application components or content files to designated target locations at each stage of the development lifecycle. Whether the components are source code, graphics, documents, or web pages, our software gathers, packages, distributes, and installs the software as specified. You save time and reduce errors by automating the numerous, repetitive steps of moving new and modified objects or build results to other machines or logical partitions.

gives you additional, powerful deployment package management capabilities, making application re-deployment easy and software rollouts painless. With the smart labeling features and built-in project manifest, you can easily restore systems back to a previously labeled state if the deployment outcome was not exactly what you wanted. For software rollouts or other IT updates across a network, you simply assign target end points and then point and click to deliver.

With Aldon DM, you have the confidence in knowing that what you deploy across development and operations is exactly what you specified, with the added benefit of a safety net for the deployment process through our deployment package management.

Combined with Aldon Lifecycle Manager, Aldon DM

Automated Distribution and Release Management

Aldon DM automatically packages, distributes, and installs software application components to all target platforms, eliminating errors inherent in manual, scripted processes. For companies managing multi-platform environments, our software's central console enables users to easily track the distributed packages.

Management of Complex Multi-platform Environments

Aldon DM distributes all types of application objects—from source code, object code, HTML, PERL, and ASP to graphics, audio, and other content—to any platform, whether it's UNIX, Linux, Windows, mainframe, or IBM i. Our software facilitates distribution automation securely and consistently, maximizing ease-of-use and ensuring accuracy of each deployment, no matter what platform, reducing the chance for errors. And using Aldon Lifecycle Manager, you can even create an archive copy if desired. The promotion process can be controlled via role-based security, ensuring that code can't be promoted without the proper authorization.

Automatic Monitoring

During distribution, our software monitors the execution of the entire process. At any point, the process can be stopped either automatically or manually. In manual mode, the user can incrementally step through the distribution stages to monitor the activity. In the event the software

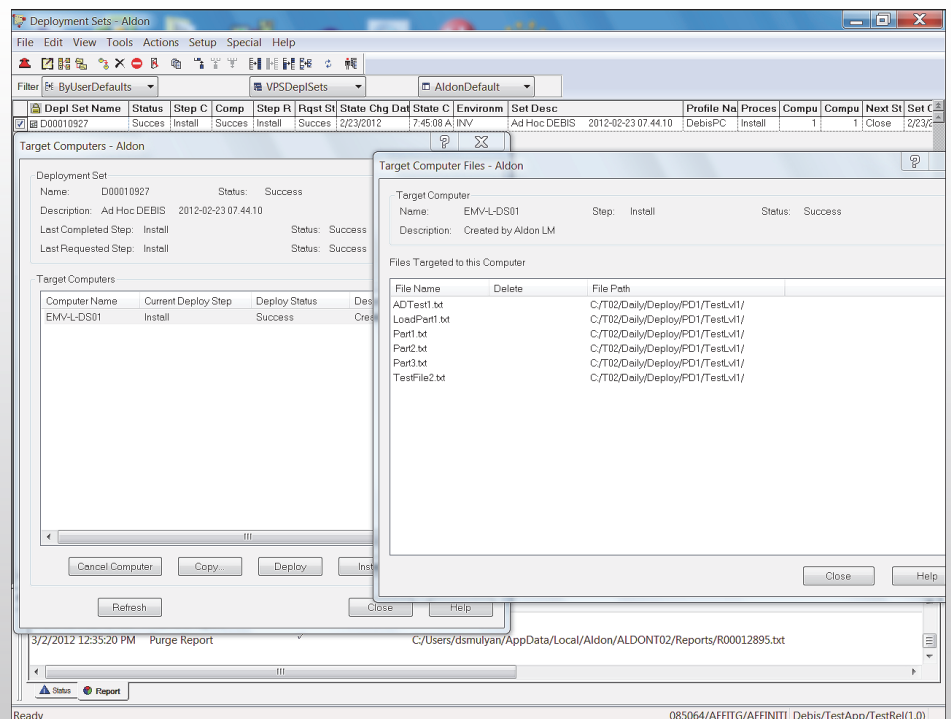
cannot be installed, Aldon DM will recover from the failure and respond as directed by the user.

Secure and Consistent Distribution

Aldon DM eliminates the security concerns and inconsistencies of manual file transfers, coordinates arrival regardless of location or system type (Windows, Web, UNIX, Linux, mainframe, or IBM i), logs all application objects and content transfers for audit purposes and limits access to objects by user.

Comprehensive Audit Trail

Aldon DM maintains a comprehensive audit trail that allows development managers, team members, and other participants to see into the deployment process and easily review the details of a specific distribution to identify failures that require further diagnosis or repair. Our software pinpoints failure patterns among machines, such as those with similar operating systems or databases, for further investigation. Finally,



Aldon Deployment Manager's set log where you can drill down to any target location and view the files and objects that are being deployed to a specific target.

How

How Aldon DM Works

With Aldon Deployment Manager you start by defining and setting up the deployment profile which tells where the configuration items are sent at each stage. After that, our software can work in two ways: 1) Automatically—whereby the code packages are automatically deployed and sent to the appropriate machines as the code is promoted from one stage to the next; or 2) On-demand, which let's you select the files at any stage of the lifecycle and then package and send them to the appropriate machine.

development managers and auditors can review distribution history, enabling project productivity, review failure recovery, and meet compliance with technology change regulations.

Painless Re-Deployment and Software Rollouts

Through our powerful deployment package management capabilities with built-in project manifests, you can easily restore systems back to a previous state if the deployment outcome is not what was expected. For testing purposes or to set up a new system on a network, you can replicate a deployment to a different machine. For software rollouts or other IT updates across a network, you simply assign a target destination and then point and click to deliver. With Aldon DM, you get the confidence you need across both development and operations to ensure that valuable work is preserved while getting a safety net for your deployment process.

Technical Specifications

You must have Rocket Aldon Lifecycle Manager installed to run Rocket Aldon Deployment Manager.

Client Requirements

- ❖ Aldon Lifecycle Manager: Windows 2000, Windows XP, or Windows 7
- ❖ Aldon Deployment Manager: Java Runtime Environment (JRE) 1.6.0 or greater

Server Requirements

- ❖ For Linux Operating Systems
 - Red Hat Enterprise Linux Version 5.x or 6.x, 64-bit mode and CentOS 5.x or 6.x, 64-bit mode
 - IBM DB2 Express-C Database Version 9.7 (standard configuration; installed with the package)
- ❖ For IBM i Operating Systems:
 - IBM i V5R4, 6.1 or 7.1
- ❖ Additional Software:
 - IBM Java Software Development Kit 1.6.0 or higher
 - Apache Software Foundation Jakarta Tomcat Version 6.0.18 or higher (installed with the package)

-  www.rocketsoftware.com
-  info@rocketsoftware.com
-  twitter.com/rocket
-  www.youtube.com/rocketsource
-  www.linkedin.com/company/rocket-software
-  plus.google.com/u/0/104109093105646534918

