

# ASG-OPSCENTRAL™

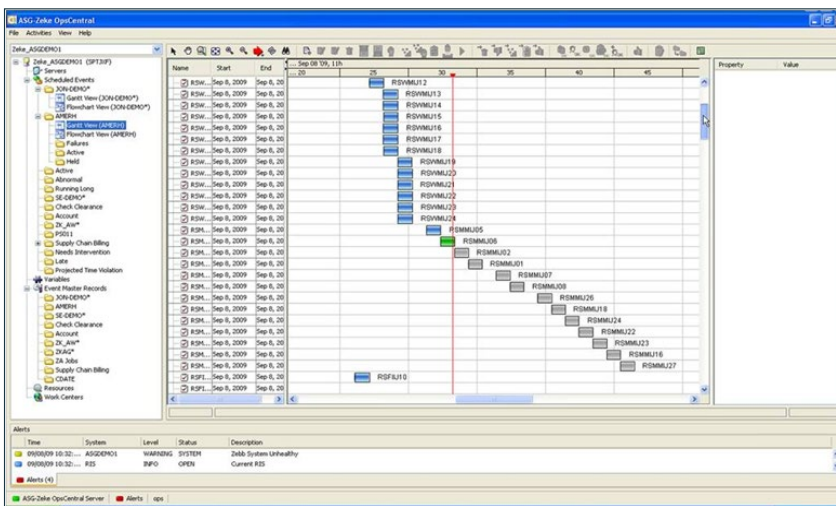
For Centralized Management of Cross-Platform Scheduling and Workload Automation

## OVERVIEW

Batch process automation and scheduling require orderly and reliable sequencing, as well as management of task executions across the enterprise. Dependencies between tasks running on different platforms and operating system environments need to be centrally managed in a way that is autonomous to the underlying operating systems, technologies, and applications. These challenges are increasing significantly as users and owners of IT services strive to automate their business processes that span business applications such as SAP, PeopleSoft, and Oracle, and platforms such as z/OS, UNIX, Windows, Linux, and AS/400.

## CENTRALIZED WORKLOAD MANAGEMENT

To maximize productivity and minimize required platform expertise, operations personnel need a centralized method of managing disparate environments and workloads across the enterprise in a standardized fashion. Real-time, graphics-based workload management facilities provide current task execution status, quick identification of processing bottlenecks, and management of critical path and service-level objectives.



ASG-OpsCentral provides a single point of control for batch workloads across the enterprise.

## BENEFITS

- Provides centralized and Web-accessible single pane of glass management for both mainframe and distributed workloads
- Features real-time enterprise-wide graphical monitoring and management capabilities (PERT and GANTT) to easily identify processing bottlenecks and take corrective action
- Provides z/OS rerun/restart capabilities through integration with ASG-Zebb™
- Uses industry standard Java and XML, which allows for flexibility in implementation and usability
- Centralizes alerts from underlying ASG scheduling and automation solutions to streamline the exception notification process
- Provides adaptable security models to ensure ease of implementation and eliminate redundant definitions
- Supports ASG-Zeke™ workcenters to facilitate secure end-user interaction with batch processing
- Provides enhanced time zone support to facilitate user customization related to batch workloads

## CENTRALIZED POINT OF MANAGEMENT

ASG-OpsCentral™ provides a centralized management point for all ASG-Zeke and ASG-Zena™ implementations from a single Java-based, Web-accessible console.

The following are features of the Web-accessible console:

- Real-time job status representation and full-schedule management capabilities, including easily identifiable exceptions, abends, and current job status
- Management of consolidated workloads from a single common view
- Creation and management of permanent job and process definitions across the enterprise
- Variable creation and update capabilities
- Support for all operator actions available in the native products (commands such as job hold, force, cancel, operator OK, etc.)
- Command-line interface for supported scheduling and automation solutions
- Override of JCL or scripts for a job event
- Allows z/OS rerun/restart capabilities, provided by ASG-Zebb and managed directly from ASG-OpsCentral

## ENHANCE USABILITY THROUGH JAVA-BASED CLIENT

ASG-OpsCentral provides an accurate, real-time, centralized representation of production workloads at any point in time across the enterprise. Using ASG-OpsCentral, schedulers can easily maintain production workloads from mainframe, distributed, and ERP environments. Operators can monitor the status of the workload's progress using a combination of queue-based (equivalent of ASG-Zeke's Schedule List View) and graphical PERT and GANTT representations that include sort and filtering capabilities to quickly find objects that require operator intervention. ASG-OpsCentral offers the capability of selecting workloads from multiple mainframe and distributed platform implementations and managing them from a single pane of glass. This includes the ability to display consolidated job dependencies in a single flow chart. These flow charts also identify critical paths.

ASG-OpsCentral provides client installation options under Windows and Linux environments that can be used in conjunction with the native ASG-Zeke TSO ISPF interface and the ASG-Zena client. Client views are user-customizable to reflect individual display preferences, such as the platforms on which the workload is running, predecessor/ successor relationships, and the format of the data to be displayed (hide/unhide columns, sort sequence, filtering criteria, etc.). Filtering criteria includes, but is not limited to, jobname, priority, and status. Operator action can be initiated based on the returned results.

Actions such as putting the job on hold, forcing job completion, adding or deleting a job from the daily schedule, editing job documentation, and job dependency manipulation are made simple through ASG-OpsCentral.

## TECHNICAL SPECIFICATIONS

### SUPPORTED PLATFORMS

- **Client Software**
  - Windows
  - UNIX - Sun Solaris, HP-UX, IBM AIX
  - Linux - Mandrake, Red Hat, and SuSE
- **Registration Server**
  - z/OS
  - UNIX - Sun Solaris, AIX
  - Linux - Mandrake, Red Hat, and SuSE

### SUPPORTED PROTOCOLS

- TCP/IP

### SYSTEM REQUIREMENTS FOR CLIENT

- 1+ GHz processor minimum (1+ GHz dual core processor recommended)
- 1 GB memory minimum (2 GB memory recommended)

#### FOLLOW US



[www.asg.com](http://www.asg.com)

ASG Technologies is a global software company providing the only integrated platform and flexible end to end solution for the information powered enterprise. ASG is the only solutions provider for both Information Management and IT Systems and has over 3,500 customers worldwide. To learn more visit [www.asg.com](http://www.asg.com).

ASG Technologies | 1.239.435.2200 or 1.800.932.5536 | 708 Goodlette Road North, Naples, Florida USA 34102 | [www.asg.com](http://www.asg.com)

© 2019 ASG Technologies Group, Inc.

All products mentioned are trademarks or registered trademarks of their respective holders.

ASG-OpsCentral\_datasheet\_20191029en