



Rocket U2 UniData®

power and performance without the maintenance

*Deliver even better availability, interoperability
and security for your data*

Delivers low TCO and exceptional scalability to meet the challenges of on demand business in the SMB and large enterprise markets

Provides intuitive design and high-performance queries using an extended relational data model

Supports security and robustness via encryption, authentication and high availability features

Features native high-performance interfaces for .NET, Java™ and more

Includes U2 Dynamic Objects for easier exchange of data with web services

built-in power and cost efficiency.

Because of its architecture, UniData deployments are highly scalable, and you can satisfy your application requirements with a single, low-cost solution with very little maintenance or management required. Innovative features provide for optimum response times, and many management tasks usually associated with database administration have simply been obsoleted by UniData, which contributes to the low total-cost-of-ownership (TCO).

power for developers.

High-performance data access commands and full SQL, C, Java, Active-X, Socket, .NET, XML, RESTful and SOAP interfaces offer a wide range of flexible development choices. Comprehensive array, string and matrix-handling commands and numerous flow control structures make complex programming jobs manageable and cost-effective.

Expose your data to a world of SQL-based tools using ODBC, JDBC or OLEDB and take advantage of some of the most powerful tools in the IT industry with these standard data interfaces.

The V7.3 release delivers U2 Dynamic Objects (UDO), an easier way to exchange data with web services and further extend the value of your UniData application. Creating a UDO allows you to easily provide or consume data in JSON format.

The U2 *Basic Developers Toolkit (BDT)* is an integrated, graphical development environment. BDT, a set of Eclipse plug-ins, allows programmers to explore UniData resources, and edit, compile and debug code in UniBasic. This powerful and fun-to-use tool raises programmer productivity and fosters the use of programming best practices.

operate securely.

UniData 7.3 allows for more protection for your data than ever. With the addition of Digest Authentication protocol, a more secure method of authenticating your clients is now available.

UniData applications create secure communication channels using Open Secure Sockets Layer (OpenSSL). UniBasic, Java and Microsoft® Windows® interfaces support SSL for client and server authentication, encryption and message integrity. UniData's Java-based graphical administration tools simplify SSL configuration and management.

UniData Automatic Data Encryption (ADE), which requires minimal changes to existing applications, protects sensitive data on disk. Records or fields can be configured to be encrypted and decrypted automatically as they are written to or read from disk. A graphical user interface is provided to manage encryption keys and wallet support allows automation of key activation.



robust functionality.

UniData increases your options for keeping your applications available. In addition to safely storing your data in UniData you can replicate your data to a SQL database. Store your data in UniData and it can be simultaneously replicated to Oracle, IBM DB2® or Microsoft SQL Server. Use the replicated database for data-mining or reporting while you use UniData as your production workhorse.

UniData offers recoverability, support for transaction processing, and data replication to enable a high level of robustness for mission-critical solutions. The Recoverable File System (RFS) feature logs transactional and non-transactional updates to disk or tape to protect the structural and logical integrity of files in the event of a media or system failure. RFS speeds recovery by processing only committed transactions.

system requirements.

For the latest availability information, visit: <https://u2tc.rocketsoftware.com/matrix.asp>.

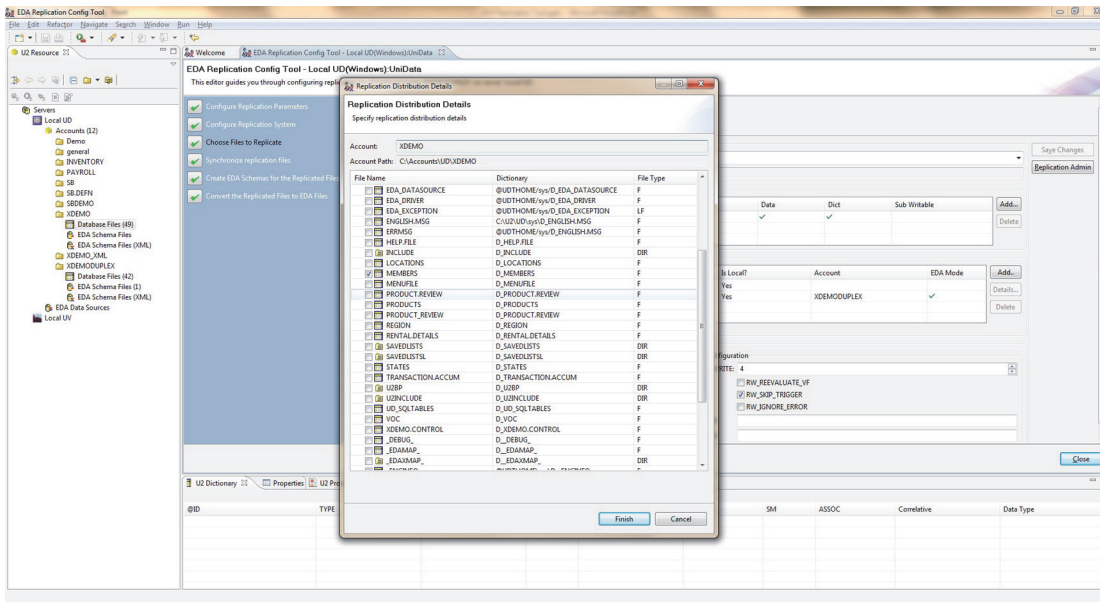
AIX	6.1, 7.1	System p (64-bit)
HP-UX	11.23, 11.31 11.23, 11.31	HP PA-RISC Intel Itanium 2 (64-bit)
Linux	Red Hat Enterprise Linux 5, 6 SUS Linux Enterprise Server 11	x86 (32-bit, 64-bit)
Solaris	10, 11	Sun UltraSPARC (64-bit)
Solaris x86	10, 11	x86 (32-bit, 64-bit)
Windows	XP, Vista 2011, 2008, Windows 7	x86 (32-bit, 64-bit) x86 (64-bit)

Emerging Technologies

Data Type Enforcement provides an optional check on data written to a file in order to assure only valid data is stored.

Replication with External Database Access (EDA) can be used to replicate your data to a SQL database on the same server.

U2 MetaData Manager (U2 MDM), a user-friendly tool, quickly and easily builds and maintains mappings for your SQL tools accessing UniData



Configure UniData to replicate your data to an external database



Rocket®

- www.rocketsoftware.com/u2
- U2AskUs@rocketsoftware.com
- twitter.com/rocketu2
- facebook.com/rocketu2
- youtube.com/rocketu2
- www.rocketsoftware.com/u2/linkedin