



DATASHEET

# Rocket Discover and IBM Cognos TM1



## Self-service BI Empowers TM1 Business Users

- Access TM1 easily with self-service data visualization and discovery
- Change views as needed to make agile business decisions
- Blend data for a 360-degree view and easier collaboration

IBM® Cognos® TM1® is a workhorse business solution for the technical users who harness its power. However, business users and executives can be overwhelmed by its complexity, and may lose precious time while relying on the TM1 administration team to gather data and build reports.

Rocket® Discover provides a way for business users to easily access TM1 cubes. It lets them quickly create rich visualizations that expose trends, outliers, and historical data, to derive insights for planning and forecasting.

With Discover, you can get more from your investment in TM1 by enabling all your business users to work with timely data. Give them the confidence they need to make the right forecasting, modeling, and business planning decisions.





## ▶ Access TM1 easily with self-service data visualization and discovery

Rocket Discover gives executives and line-of-business owners a fast, easy way to connect to, explore, and share TM1 data—without help from IT. This hands-on approach to BI visualization provides deep insights into TM1 cube data for more of the people who need it.

Discover connects directly to TM1 using the REST API. It takes advantage of native TM1 security and IBM Cognos Access Manager (CAM) Namespace security for seamless integration. Simply provide credentials, and Discover displays a preview of cube views; no modeling environment, middle layer, or scripting required. All users need to do is select the TM1 server and cube. If they are authorized to make changes to TM1 data, they can write those values back to the original cube.

Rocket Discover makes TM1 more accessible, letting non-technical users directly access, enhance, investigate, explore, and share data insights that benefit the users and the business.

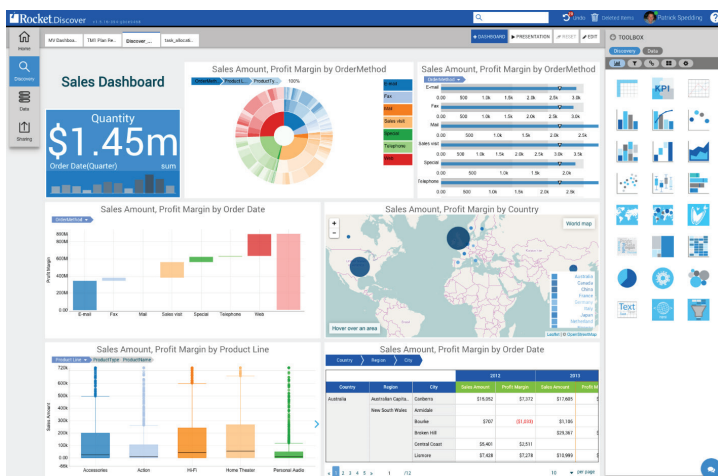


Figure 1: Business users can directly access, enhance, investigate and explore data insights.

## ▶ Gain flexibility to change views as needed

To make rapid, informed business decisions, users need the ability to quickly modify the way they access data. Discover offers the flexibility to directly change views without jumping through hoops inside TM1. To see data based on criteria such as country, GL code, or a different date range, simply drag and drop and nest dimensions in Discover until the right level of data for analysis is reached—all without going back into TM1. Users who want to enrich views to test a theory or run through different scenarios to see how data is affected can easily create ad-hoc calculations. Custom views are stored on Discover instead of TM1, so users have ready access when they need it.

## ▶ Blend data for a 360-degree view and easier collaboration

More information leads to better-informed decisions. The data stored in the TM1 cube alone does not provide the necessary 360-degree view many executives require. For the complete picture, they also need to analyze data stored outside the cube, such as enterprise data from mainframe to relational sources and the desktop. When users capture data from multiple sources in one dashboard, they gain new, valuable insights.

With Discover, users can create blended dashboards with visualizations from various data sources. For example, one visualization might display TM1 forecasting data, another, inventory levels and revenue from an IBM Cognos PowerCube, and a third, data from a file on a local machine. Users can then collaborate with stakeholders in real time simply by sharing the dashboard in the chat window. This ability to work as a team within the dashboard environment can eliminate costly surprises that could negatively impact the business.

“ Discover integrates Excel content with Cognos Cube data, provides TM1 write-back, data preparation, and storyboard presentation capabilities for a truly cost effective & genuinely usable Analytics solution. ”

Justin Hoareau  
Executive Director, Services  
Bistech Pty Ltd



Easily develop reports and dashboards using data from all enterprise sources through a simple drag-and-drop interface. Add fields, filtering, and manipulate data as needed. Explore data through drill-down and automated analytics to reveal relationships and display anomalies. Team members can collaborate with colleagues on analysis and decisions directly in dashboards.

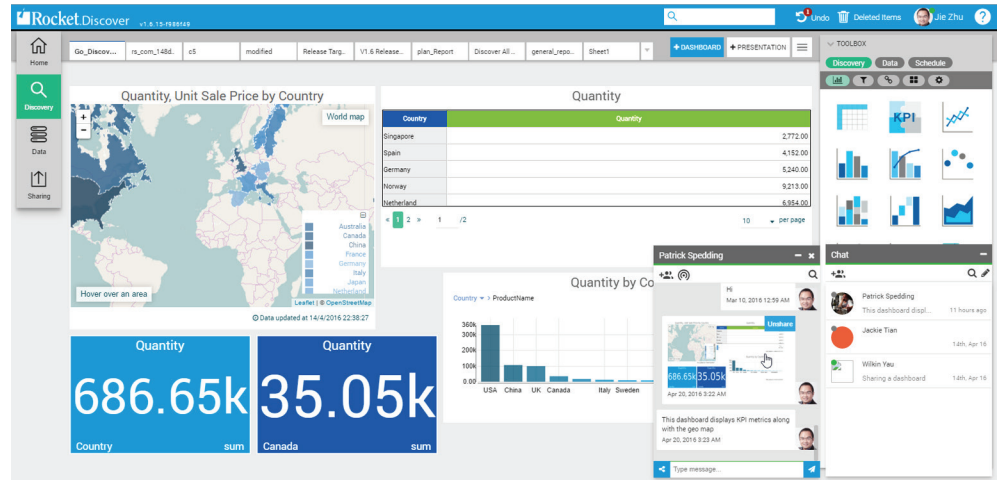


Figure 2: Make smarter decisions based on blended dashboards and team collaboration

With support for TM1 subsets, attributes, aliases, and picklists, Discover makes it simple to customize visualizations for immediate needs. Execute pre-established Turbo Integrator (TI) process flows from within Discover and trigger processes such as archiving historical data or rolling periods forward.

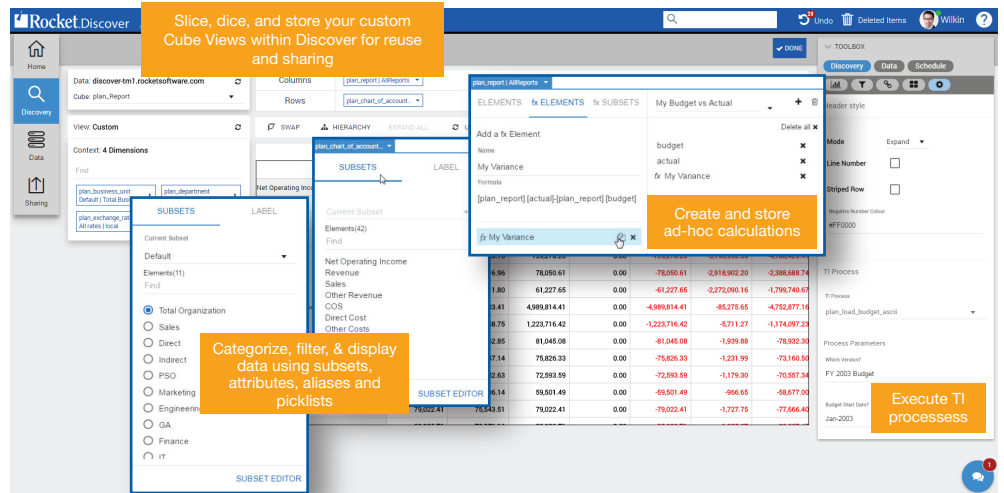


Figure 3: Increase ROI by empowering business users to leverage TM1 features

Native TM1 connectivity preserves the cube's hierarchical structure, business rules, and aggregations. Discover automatically displays columns and rows of cube views as well as context and subset filters. To create visualizations, simply select a format from options such as bar, line, scatter plot, bullet chart, tree map and heat map.

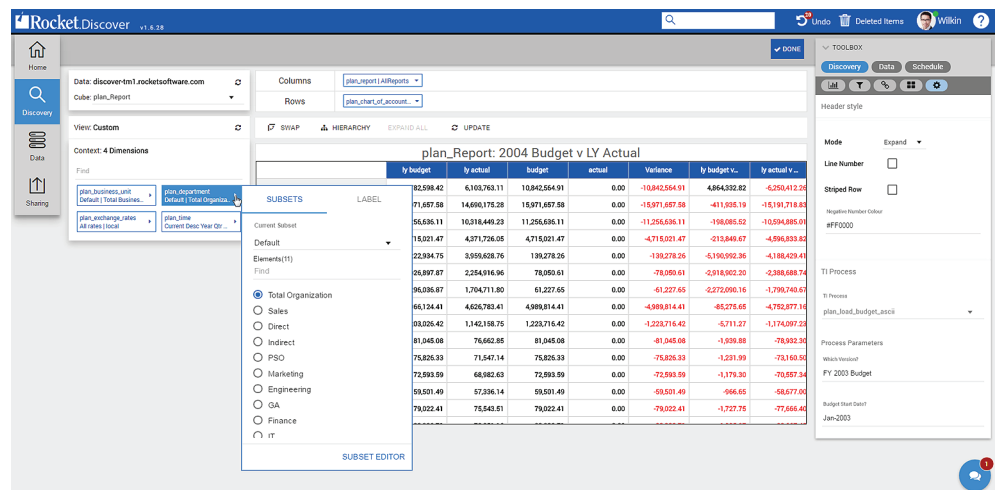


Figure 4: Visualization editor

# Tech Specs

Rocket Discover is available via cloud and on-premise deployments, and uses a server-side architecture that provides a web interface, so you never have to deal with client installations and updates.

## SERVER SPECIFICATIONS

### Hardware Requirements:

- Windows 7 64-bit
- Windows Server 2012 (with .NET Framework 3.5 enabled.)
- Windows Server 2008 R2 Service Pack 1
- Linux (64-bit CentOS 7, Red Hat Enterprise Linux 7, Ubuntu 14.04 and above)

### System Requirements:

- Minimum recommended requirements for full production systems are:
  - 4 core CPU
  - 250 GB free disk space
  - 8 GB RAM
- Minimum recommended requirements for non-production systems are:
  - Dual core processor
  - 50 GB free disk space
  - 4 GB RAM

## CLIENT ACCESS

### Web Browser Requirements:

- Google Chrome version 50.0.2661.102 and above
- Mozilla Firefox version 47.0.1 and above
- Microsoft Edge version 25.10586.0.0 and above
- Apple Safari version 9.0.3 and above

## DATA SOURCES

To optimize infrastructure (and user experience) Rocket Discover provides a hybrid approach to data retrieval, using live-query and/or in-memory data access. Connect to any of the following data sources for data preparation and discovery:

DATA SOURCES	IN-MEMORY	LIVE QUERY
IBM Cognos TM1 (10.2.2 FP 1 and above)		X
IBM DB2 LUW	X	X
IBM DB2 for i	X	X
IBM PureData System for Analytics	X	X
IBM QMF WebSphere	X	
Microsoft SQL Server (2005 and above)	X	X
MySQL	X	X
Oracle (11g and above)	X	X
Rocket D3	X	
Rocket UniVerse and Rocket UniData	X	
Rocket Data Virtualization	X	X
Rocket R/Link: This source supports only .CSV, TAB, SQY, and .txt formats	X	
Teradata	X	X
IBM Cognos 10 BI content, including queries and PowerCubes	X	

## DATA FILE TYPES

- CorBusiness (SQY) version 5.30.R02 and above
- CorBusiness (TAB) version 5.30.R02 and above
- CSV including the following delimiters: Comma, Tab, Space, Pipe, Semi colon

-  [rocketsoftware.com](http://rocketsoftware.com)
-  [info@rocketsoftware.com](mailto:info@rocketsoftware.com)
-  [twitter.com/rocket](https://twitter.com/rocket)
-  [www.youtube.com/rocketsource](https://www.youtube.com/rocketsource)
-  [www.linkedin.com/company/rocket-software](https://www.linkedin.com/company/rocket-software)
-  [www.facebook.com/RocketSoftwareInc](https://www.facebook.com/RocketSoftwareInc)
-  [blog.rocketsoftware.com](http://blog.rocketsoftware.com)