



# Rocket® iCluster

Business Continuity:  
High Availability and Disaster Recover for IBM i

- Provides the highest fidelity through match-merge of audit and database transactions
- Offers a cost-effective fee structure with no transfer fees for upgrades within the processor group or for multiple LPARS
- Features high-speed operational switching and access between geographically distant locations during planned and unplanned downtime
- Empowers any server to be the master for easy, fast configuration, with updates to all other servers automatically

## A Logical Replication Solution for High Availability

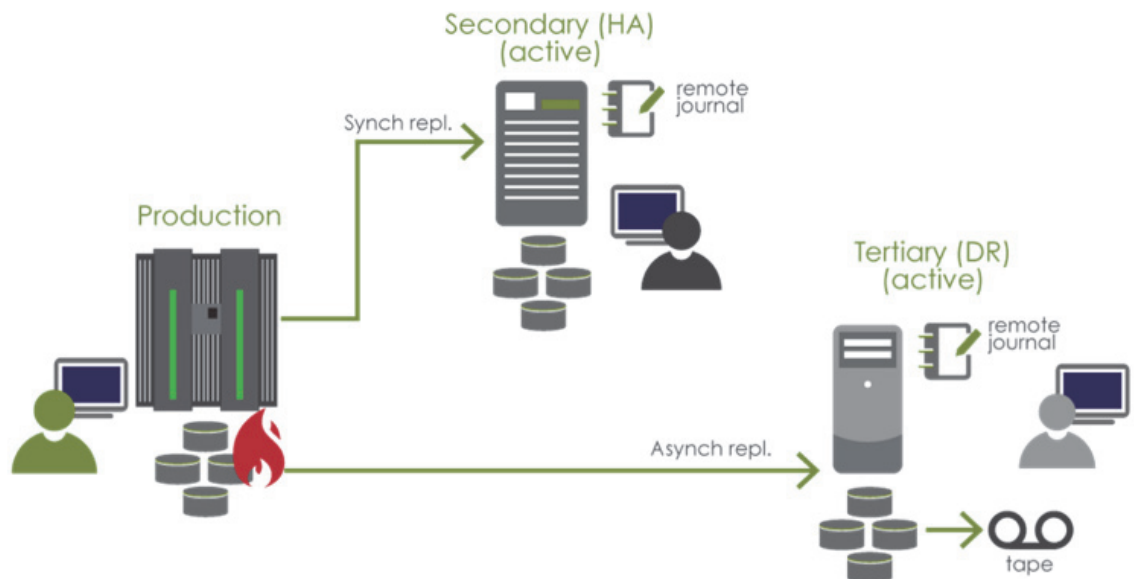
In today's global 24x7 business environment, organizations need their data and business applications to be constantly accessible — regardless of scheduled system downtime for server upgrades, backups, batch processes, or unplanned outages caused by natural disasters. Rocket iCluster is a High-Availability (HA) and disaster recovery solution for business applications operating on IBM Power or PureFlex systems running IBM i, which enables continuous access through monitoring, notification and self-correcting replication issues. With iCluster you always know your recovery point and recovery time for HA.

## Sync. Check.

Application downtime can cost your organization substantial time and resources. iCluster sync check capabilities that include an always-active sync check with results visible immediately, file contents sync check and authority repairs, provide you with enhanced monitoring, extensive object support and improved switchover times.

## Automatic and Flexible

iCluster is easy to manage, administer and switch. Changes, additions or deletions are mirrored in near real-time to the backup system with concurrent access to read-only business applications. Flexible administration such as user-defined notifications and alerts, allow you to take care of issues as they happen making you proactive instead of reactive.



## Always Available

iCluster ensures HA through role swapping (fully or partially automated); synchronization checking of file attributes, file contents, IFS attributes, object existence, data area contents, and output queues; monitoring via green screen or an easy-to-understand GUI; and automatic resynchronization of out-of-sync objects. The automatic configuration command, together with the ability of iCluster to configure once on the source and then push it out to the backup system, ensures that your business is up and running much faster with HA.

## Scalable Replication

With extremely high-speed replication capabilities, iCluster automatically scales to handle the size of your business and its transactional volumes. Replication minimizes the time required for a switch, and enables resynchronizations after network outages.

## High Level Features/Benefits

### Flexible Auto-Configuration

- ❖ Allows you to select which libraries are replicated based on a variety of criteria, such as generic names, thus allowing auto registration of new libraries.

### Convenient Java GUI Administrator

- ❖ Working in real time, the event-driven Java GUI administrator offers single-point, multiple-node administration from the web or mobile devices.

### Informative GUI Performance Monitor

- ❖ Through easy-to-read graphical displays, the performance monitor shows you source journals, target journals and a simple green arrow to indicate that replication is active for both the send and the apply. It also provides full administration with a complete set of commands and menus.

### Fully Command Driven

- ❖ Easily integrate into current processes, template the configuration, and use additional tools to expand product functionality.

### Integrity Via Autonomics

- ❖ Ensure the integrity and readiness of backups via sync checks, reduced administration, and an increased awareness of your HA status.

### Integrate with Ease

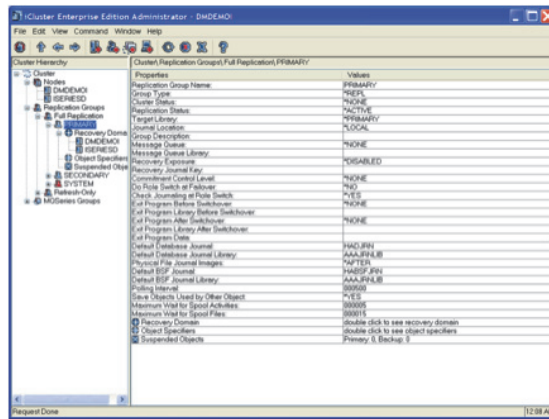
- ❖ iCluster integrates with SAN and third-party solutions allowing you to replicate AIX, Linux, Microsoft and Windows on IBM i.

## High Accuracy

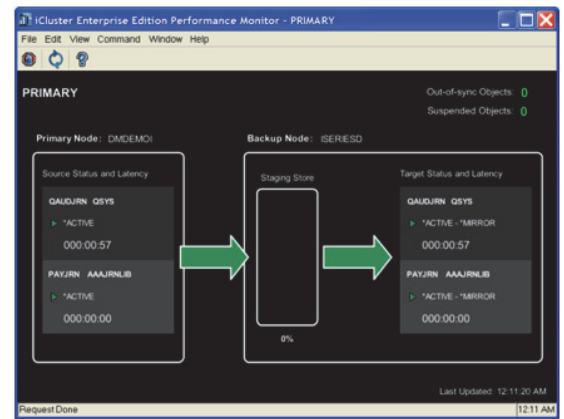
When replicating from your production to your backup box, it has to happen in near real-time and be logically consistent. iCluster matches and merges database and audit transactions based on timestamp thus giving you unmatched accuracy.

## Single Solution

iCluster is licensed by server and can be installed on multiple LPARS without incurring additional fees. Hardware upgrades and transfers to new hardware within the same processor group can also be performed without incurring additional license fees.



Working in real time, the event-driven Java GUI administrator offers single-point, multiple-node administration from the web or your mobile device.



The graphical performance monitor shows you the source journals and target journals. A simple green arrow indicates that the replication is active for both the send and apply. A gas gauge shows you when reorgs or refreshes are in process.

## System Requirements

- ❖ IBM i5/OS V5R4 or later (including i7.1)
- ❖ TCP/IP
- ❖ 200 MB DASD for installation
- ❖ 90MB DASD for operation
- ❖ 512 MB DASD for staging store (although typical size is 10 GB)
- ❖ Additional disk space on each node for save files and journal receivers

- [www.rocketsoftware.com](http://www.rocketsoftware.com)
- [info@rocketsoftware.com](mailto:info@rocketsoftware.com)
- [twitter.com/rocket](https://twitter.com/rocket)
- [www.youtube.com/rocketsource](http://www.youtube.com/rocketsource)
- [www.linkedin.com/company/rocket-software](http://www.linkedin.com/company/rocket-software)
- [plus.google.com/u/0/104109093105646534918](https://plus.google.com/u/0/104109093105646534918)

