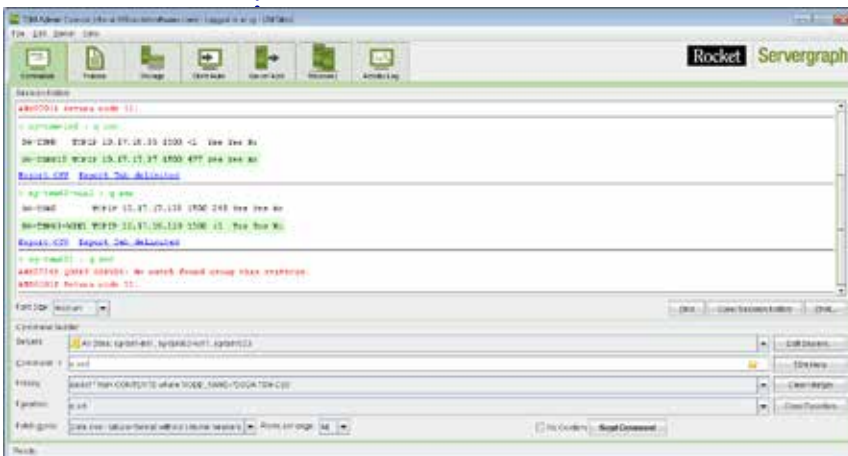


# Rocket® Servergraph Admin Center for Tivoli Storage Manager

No Matter what the Question,  
Rocket Servergraph is the Answer  
for your IBM Tivoli Storage  
Manager (TSM) Environment.



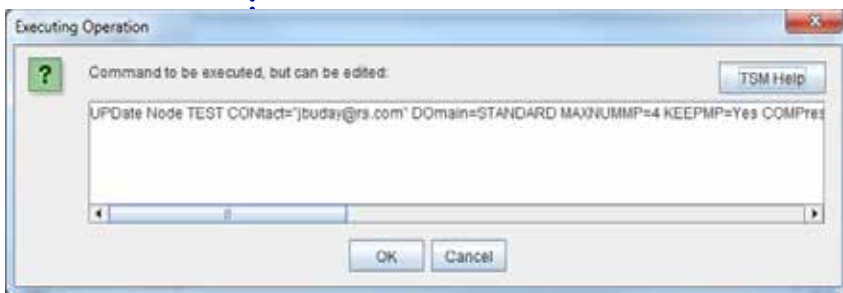
## What is Servergraph Admin Center for TSM?

Servergraph Admin Center for TSM is a software package that enables you to manage your entire TSM environment through a graphical user interface and a command line interface.

You can easily perform your daily administration tasks, including detecting and fixing problems in your TSM environment, managing users, and allocating resources. With Servergraph Admin Center for TSM you can issue more than 300 TSM commands and cancel, change or edit command syntax in TSM version V5 or V6. Servergraph Admin Center for TSM empowers administrators to maximize the availability, performance, and security of your TSM environment with a single tool to manage all TSM servers running on any platform.

## Key Functional Areas of Servergraph Admin Center for TSM

- ❖ Command View
- ❖ Policies
- ❖ Storage
- ❖ Client Automation
- ❖ Server Automation
- ❖ Activity Log



### Geared Toward Usability

Intuitive - all views are designed to be easy to use for administrators of all levels

Customizable - automatic persistence of user settings:

- ❖ Table settings
- ❖ Filters
- ❖ Favorite and History commands

## Feature Summary

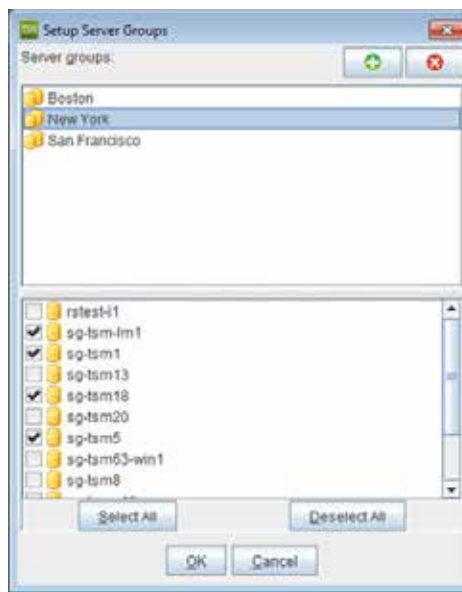
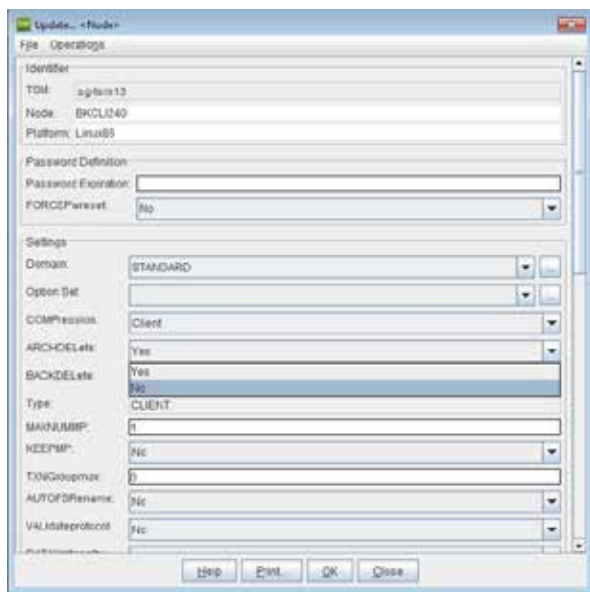
- ❖ Access to all TSM tables
- ❖ Sorting and filtering on all tables
- ❖ Contextual help for TSM commands
- ❖ Numerous export capabilities
- ❖ Access to one TSM server, all TSM servers or a selection
- ❖ Permission level viewing
- ❖ TSM scripts are editable and cloneable
- ❖ Restart failed client schedules by node
- ❖ Direct access to node data (backup, archives, tapes) for auditing purposes
- ❖ Color-coded messages in Activity Log
- ❖ Definition of custom views on any TSM table
- ❖ Specific node session restart on failed client schedules
- ❖ Graphical, real-time trending of any numerical value
- ❖ Configurable auto-refresh of table views

## System Requirements

- ❖ Windows XP, 7 & 8, Vista, Server 2003, Server 2008
- ❖ Red Hat Enterprise Linux 5 or 6, 64-bit
- ❖ SUSE Linux Enterprise Server 11

## Architecture

- ❖ Web-based access
- ❖ Client/Server
  - Server running on a Tomcat instance
  - Java clients distributed via WebStart (through a web browser)
- ❖ Account management
  - Group and user definitions
  - Fine granularity of permissions settings
  - Activity log of user actions
- ❖ Use of native DSMADMC sessions



## Free Trial

Servergraph Admin Center for TSM is available for a free 30-day trial for one TSM instance. Email us at [servergraph@rocketsoftware.com](mailto:servergraph@rocketsoftware.com) for more information!