



Rocket® BlueZoneX

Render and Display Graphical Windows X Applications

Users can simultaneously work with PC applications and X Window applications all from one PC desktop

BlueZoneX supports Windows XP, Windows Vista, Windows 7, Windows 8, & Windows 8.1

Each license can be used in any Windows environment

No additional charge to upgrade to new versions of Windows

Save With Bluezonex Server.

Rocket® BlueZoneX is a complete PC X server solution that lets you connect quickly and easily to X Window applications running on UNIX and Linux platforms.

BlueZoneX includes SSH security, Open GL graphics, multiple desktop and multiple monitor support, copy and paste of text and graphics, FIPS 140-2 compliance, and a session distribution wizard for simplified administration—all included in a single product at one low price. Also, BlueZoneX offers a flexible licensing model, including named or concurrent user options.

BlueZoneX Features:

- ❖ A PC X server that renders 3D graphics applications running on UNIX or Linux platforms and displays them on a Windows desktop PC.
- ❖ A PC X server that is easy to install, configure, and operate.
- ❖ Low cost: BlueZoneX offers superior performance at three to five times less cost per seat.

PC and X on One Desktop.

With our BlueZoneX Terminal Emulator, users can simultaneously work with PC applications, X Window applications and, of course, browser applications—all from one PC desktop.

BlueZoneX supports Windows XP, Windows Vista, Windows 7, Windows 8 and 8.1 as well as a Windows/Citrix server. Each license can be used in any of these environments and all are available from a single installation menu. As your desktop evolves over time, there is no additional upgrade charges that you incur to support the newer versions of the Windows operating system.

Secure.

BlueZoneX supports RSH, REXEC, and XDMCP protocols, as well as Secure Shell (SSH). Unlike other PC X servers, the SSH is built into the product at no additional charge.

High Level Features/Benefits

SSH ❖ BlueZoneX was the first PC X server to integrate SSH as a connect option, complementing the standard RSH, REXEC, and XDMCP protocols. Even today, few X11 servers include integrated SSH and some charge premiums up to \$65.00 per user.

OpenGL ❖ While some X11 servers offer 3-D support, BlueZoneX was the first to offer support for the Silicon Graphics' OpenGL. It also provides the benefit of hardware acceleration by routing the OpenGL-based X traffic through the computer's OpenGL-compatible graphics accelerator card.

X-admin32 ❖ X-Admin32 allows users to create one or more sessions, save those sessions as a file, and email the file as an attachment to a group of users. Simply double-clicking the file will add those sessions to the users' BlueZoneX registry, and they can use the sessions immediately.

Error Logging ❖ BlueZoneX allows the user to turn on an error logging facility that can capture all activity leading up to an error.

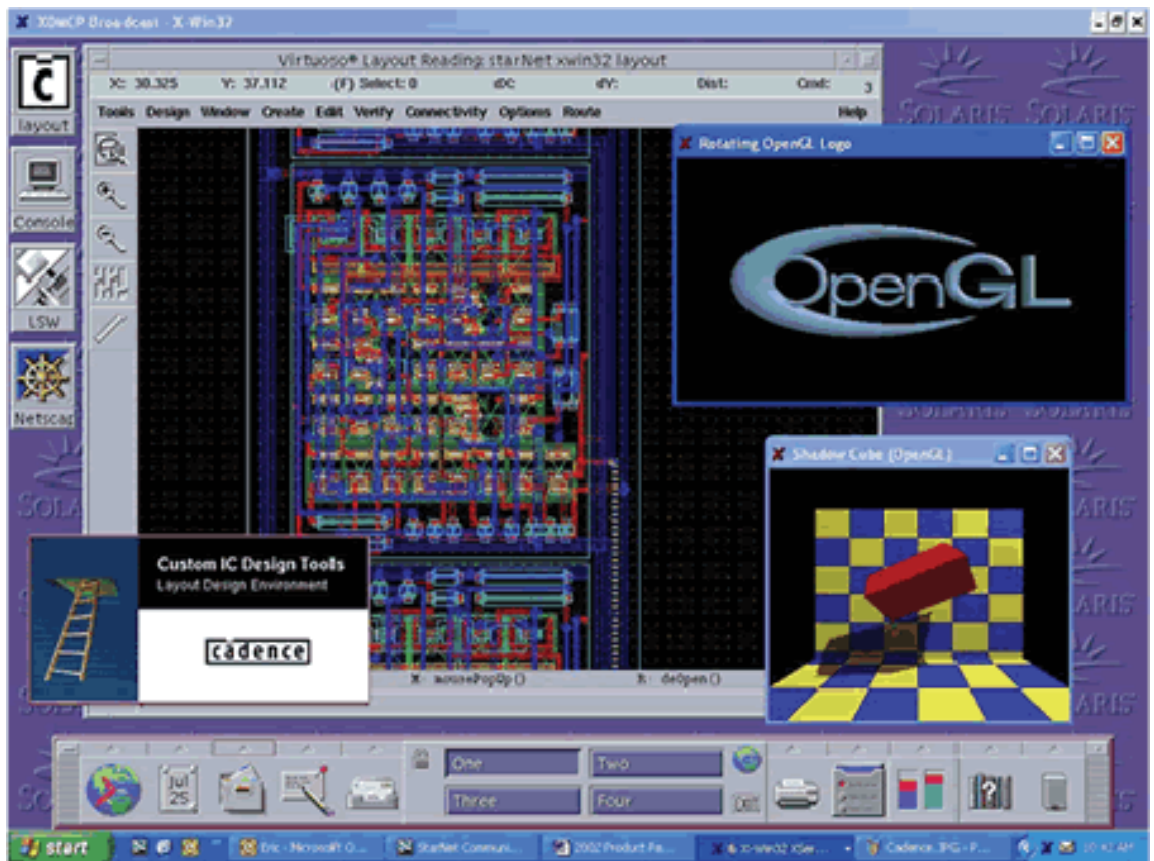
Multiple XDMCP ❖ BlueZoneX is one of the few X servers that allows you to connect to Multiple UNIX and Linux desktops simultaneously. Simply alt-tab between desktops.

Multicast ❖ Allows you to narrow the list of X servers and workstations that respond to an XDMCP query to just those you are interested in.

Windows Terminal Server Support ❖ Lets system administrators set up BlueZoneX on a Windows or CITRIX terminal server to allow the terminals—even diskless, thin-client terminals—to connect to a Linux or UNIX server.

Single & Multiple Window Mode ❖ Provides the ability to run some sessions in SWM on one monitor and others in MWM on another monitor. Simply alt-tab back and forth from the UNIX and Windows desktops.

Window Mode Settings ❖ Automatically saves the chosen Window Mode (Single, Multiple) for each session.



Feature Summary

X Server Features

- ❖ Any UNIX or Linux server including
- ❖ Redhat, SuSE, Solaris, AIX, SCO UNIX, HP/UX, Caldera, or Mandrake
- ❖ SSH (Secure Shell): connection through SSH client
- ❖ Access control
- ❖ Xauth and Xhost
- ❖ Multiple X displays
- ❖ Multiple session auto start capability
- ❖ 3D (Open GL - GLX)
- ❖ Font server support
- ❖ BDF and PCF font support
- ❖ Multiple monitor support
- ❖ Window modes: single, multiple, or both
- ❖ Supported color depths: 1, 8, 24
- ❖ Error logging capability
- ❖ Copy and paste by rectangle, window and X-selection
- ❖ Window panning
- ❖ Configurable close behavior
- ❖ Session initialization—command line capability
- ❖ X-Admin32: session export tool
- ❖ Multiple network cards support
- ❖ XDM: broadcast, multicast, query and indirect modes

Configuration Features

- ❖ Configuration tool: X-Config
- ❖ Application startup tool: X-Config
- ❖ Session startup tool: X-Config
- ❖ Shortcut creation
- ❖ Keyboard: graphical mapping
- ❖ Session Wizard
- ❖ Extension support for MIT-SHM, Big-Requests, GLX, LBX, Shape,
- ❖ XTest
- ❖ Mouse and wheel support
- ❖ Ability to run a single and multiple window-mode applications simultaneously

Technical Specifications

Installation. Features

- ❖ Typical and customary, silent
- ❖ Minimum space required: 12.4 MB
- ❖ Supported operating systems:
Windows 9x, Windows NT/2000/XP
- ❖ Windows Vista/7, Tablet PC
- ❖ Citrix Metaframe, and Windows
Terminal Server (Windows 3.x version
available)
- ❖ Supported languages: English, French,
German, Italian, and Japanese
- ❖ No reboot required

