



# Rocket® DR/Xpert

## Disaster Recovery Assurance Through Automation

Identify online vs. batch files and DASD and tape-based critical files

Reduce the number of backup tapes

Benefit from duplexed backups and multiple recovery points

Disaster recovery assurance shouldn't be a manual and all-consuming task. The time and effort expended by personnel to ensure critical data is identified and then to properly process the critical data for compliance, vaulting or mirroring reasons is costly and inefficient. Rocket® DR/Xpert enables you to ensure consistent data recovery—automatically—with minimal administration by your staff.

### The Challenges

Technology has moved forward, but the task of disaster recovery assurance remains largely an intensive manual process that includes the identification of critical data, dealing with exceptions, managing resources, ensuring numerous compliance requirements are met, and securing the data. In addition, there are fewer subject matter experts today and those resources are spread thin with their many other job requirements. If you have the following challenges, you may need DR/Xpert. Can you:

- ❖ Identify all your critical data effectively and in a timely manner?
- ❖ Automatically recover to a select recovery date?
- ❖ Prioritize your application recovery to meet your SLA?
- ❖ Secure your backups automatically with encryption?
- ❖ Maintain the necessary processes to provide a positive response to these questions at all times with your current resources?

### Automated Solutions

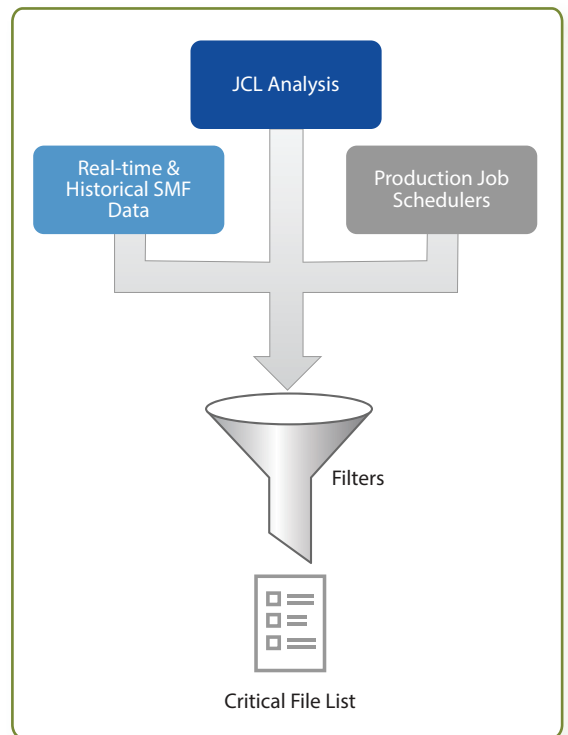
DR/Xpert provides the most comprehensive disaster recovery automation and security for your critical application disaster recovery needs of any solution in the industry. Whether recovering a single application, or all of your applications, DR/Xpert enables you

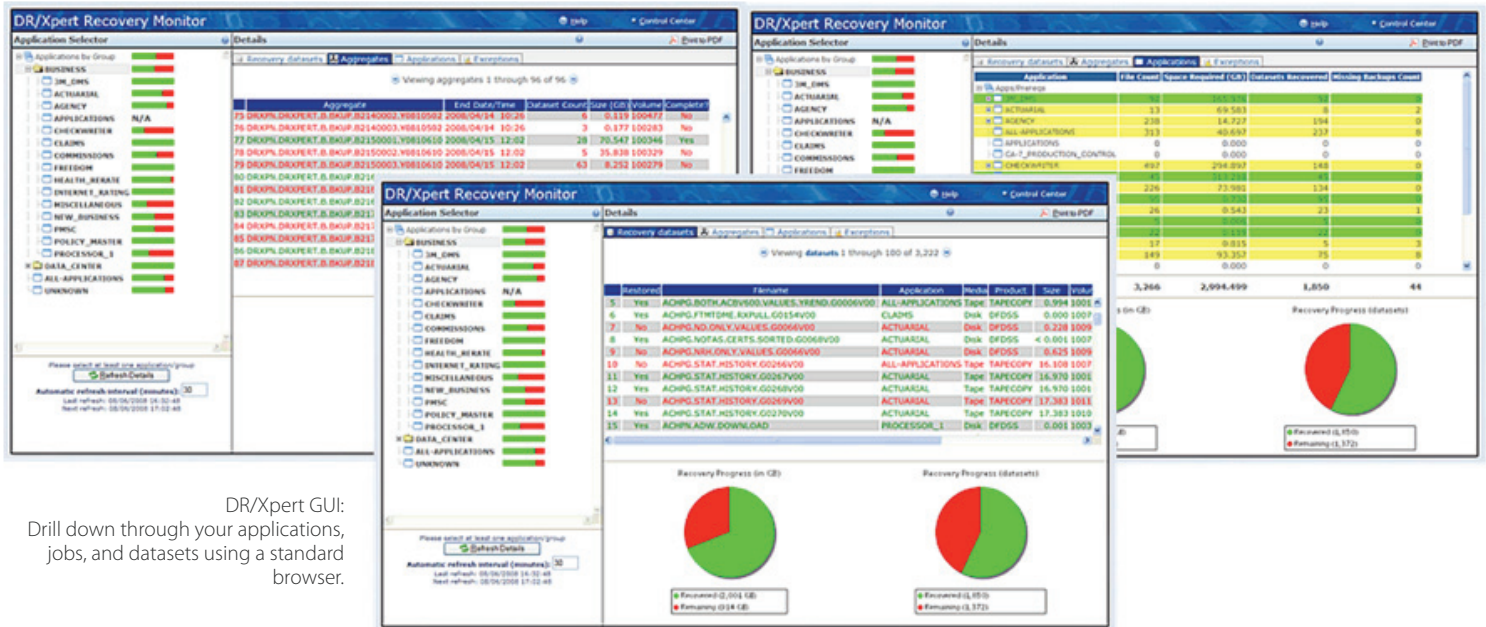
to achieve your Recovery Point Objective (RPO) automatically – without assembling a number of your subject matter experts at the recovery site in hopes of piecing together your fuzzy backups into a viable recovery.

### What is in a GUI?

The DR/Xpert GUI is a Java based browser interface for accessing reporting information. Using the DR/Xpert GUI, you can:

- ❖ Drill down through your application, jobs, and datasets using a standard browser.
- ❖ Quickly identify critical data and the reason it is critical.
- ❖ Validate your recovery objectives using the Recovery Simulator.





## High Level Features and Benefits

- |                                     |   |
|-------------------------------------|---|
| <b>Tape Data Inclusion</b>          | <ul style="list-style-type: none"> <li>Include critical data (virtual or physical tape) in the backup for the most complete set of data for recovery.</li> </ul>  |
| <b>Mirroring Support</b>            | <ul style="list-style-type: none"> <li>Recognize volumes that are mirrored, the data location, and reports this information. Complements the mirroring plan to ensure that a valid backup is always available from which to restore.</li> </ul>   |
| <b>Offsite Data Encryption</b>      | <ul style="list-style-type: none"> <li>Offer selective encryption of sensitive data during the backup process.</li> </ul>   |
| <b>Automating Change Management</b> | <ul style="list-style-type: none"> <li>Monitor changes to the critical data list continuously and ensures that it is always up-to-date without intervention with no critical data is omitted.</li> </ul>  |
| <b>Flexible Filtering</b>           | <ul style="list-style-type: none"> <li>Groups or segregates data based on predetermined criteria: by company, division, line of business, LPAR or application.</li> </ul>   |
| <b>Anytime Backup Window</b>        | <ul style="list-style-type: none"> <li>Integrate dynamically with the job scheduling system so that backups are seamlessly inserted into the daily processing schedule.</li> </ul>  |
| <b>Migrated Dataset Backup</b>      | <ul style="list-style-type: none"> <li>Recall migrated critical datasets automatically so that they reside on primary DASD and are available for backup - removing the restriction where during the DFSMSdss backup process not being able to process datasets migrated by DFSMSHsm.</li> </ul> |

## High Level Features and Benefits

---

Efficient & Automatic Recovery

- ❖ Recover critical data in a quick, efficient manner.

Proactive Exception Management

- ❖ Save time and avoid audit or compliance issues by managing staff focus.

Auditing & Compliance

- ❖ Achieve corporate audit and compliance objectives by providing proof that critical data is backed up and vaulted appropriately.

## Technical Specifications

---

Operating System Environment

- ❖ Requires z/OS Release 1.12 or higher

Utilities Supported

- ❖ ABARS, DMS, DSS, FAVER, FDR, and Rocket Tape/Copy

 [www.rocketsoftware.com](http://www.rocketsoftware.com)

 [info@rocketsoftware.com](mailto:info@rocketsoftware.com)

 [twitter.com/rocket](https://twitter.com/rocket)

 [www.youtube.com/rocketsource](https://www.youtube.com/rocketsource)

 [www.linkedin.com/company/rocket-software](https://www.linkedin.com/company/rocket-software)

 [plus.google.com/u/0/104109093105646534918](https://plus.google.com/u/0/104109093105646534918)

