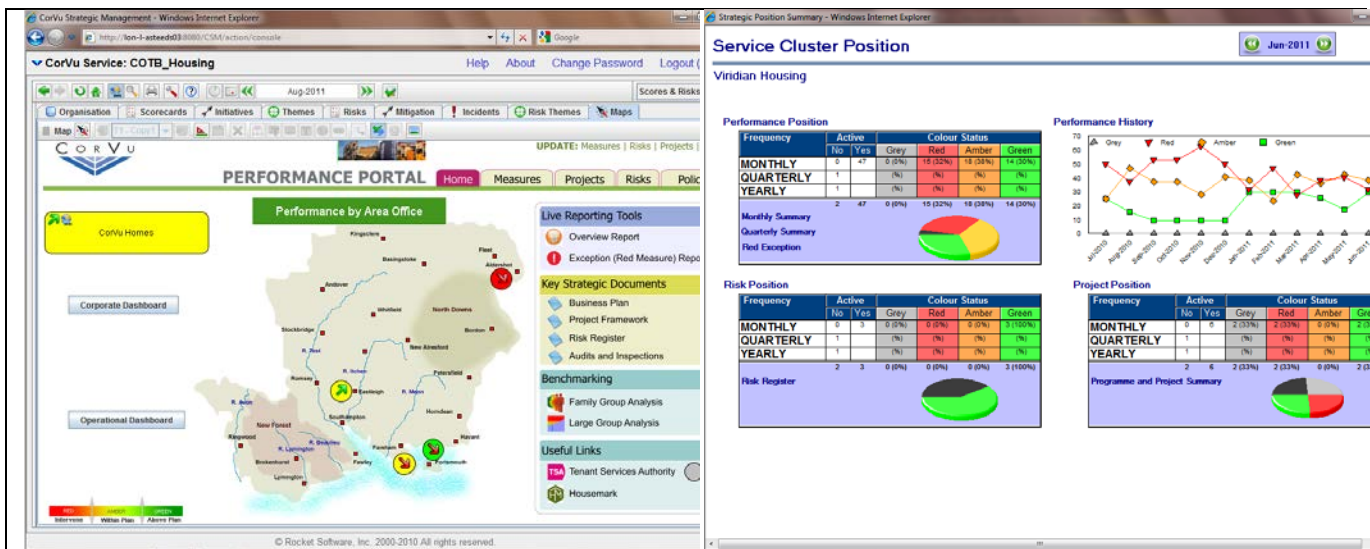


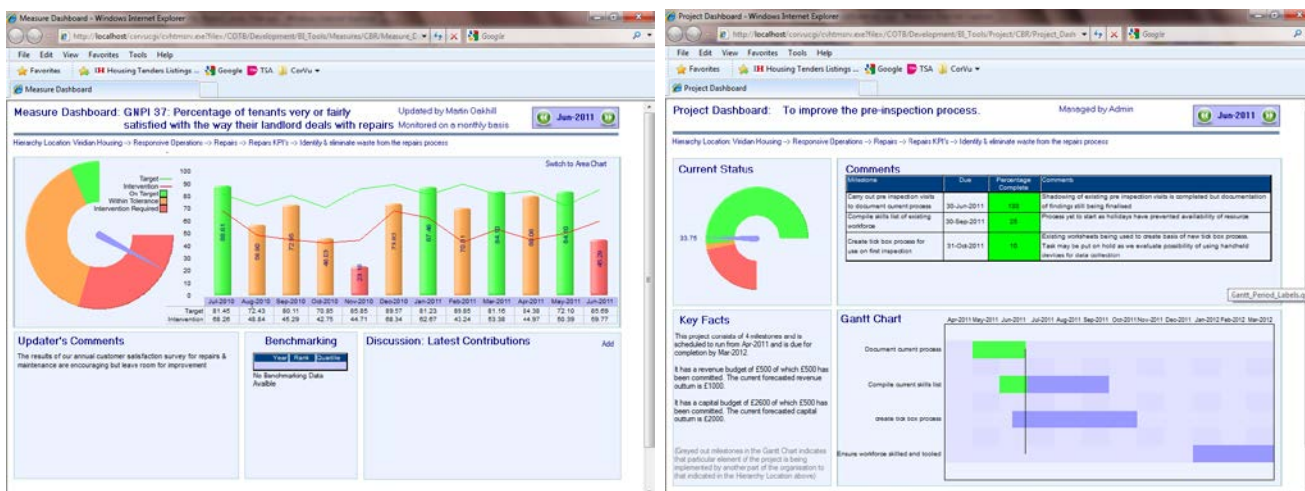
CorHousing

CorHousing provides performance indicator, risk and project management templates for the UK Social Housing sector including:

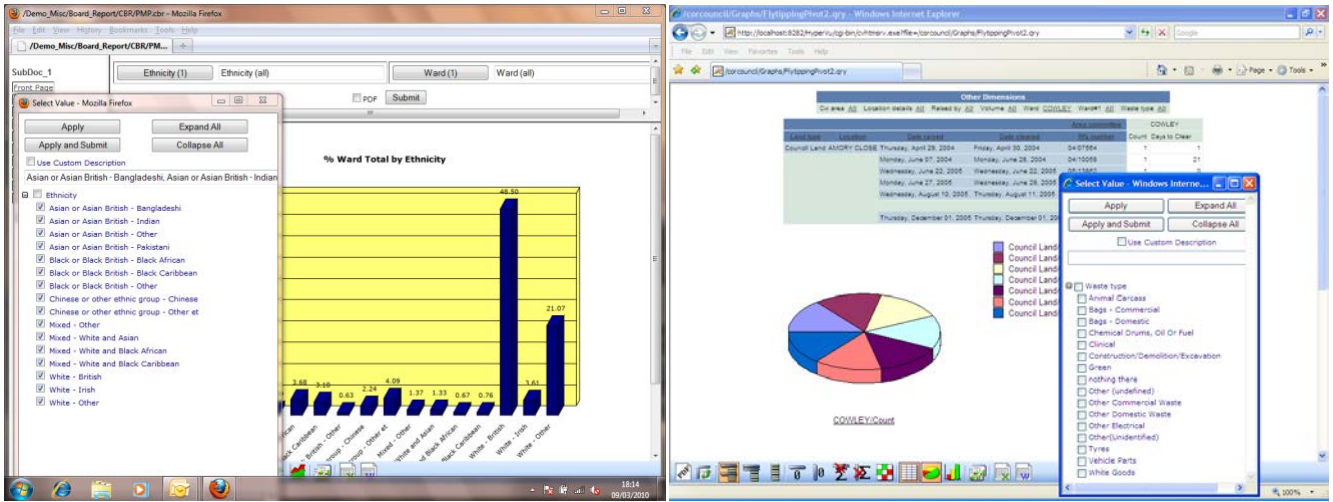
- Corporate, operational and service based scorecards
- Housemark indicators
- Housing Pls
- TSA standards
- Action plans and business alignment
- Strategy maps
- Creation of hierarchies
- Frameworks
- Project/task management
- Automated workflow for web form updates
- Weightings, trends, scoring and integrated benchmarking



True performance management requires the alignment of action plans and linkage of supporting evidence so that future performance can be modeled and measurable outcomes evidenced. CorVu provides true Performance Management (not just measurement) by forcing the alignment of actions plans to the appropriate level within a Corporate (or Operational) Plan and providing easy linkage to evidence, drilldown reports, documents etc.

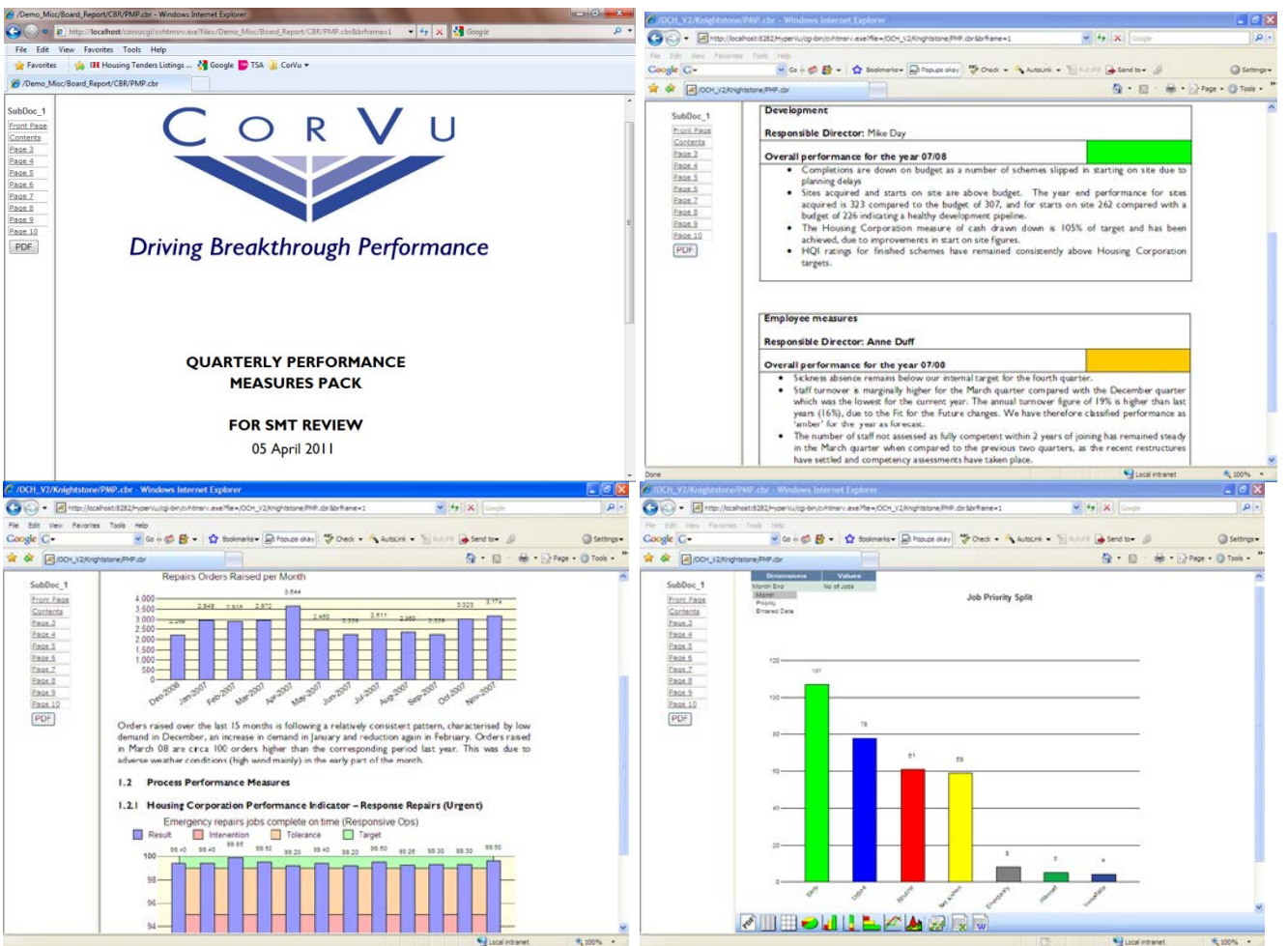


This enables measure/task owners to enter comments, supporting documentation and detail the specific actions and tasks that they have put in place to gain performance improvement. The progress, budgets and



CorPortfolio

CorPortfolio is an innovative tool for automatically assembling and organising combinations of reports, graphics, performance commentary and other information into a concise, management presentation, in printed form or as an online executive portfolio. It provides an informative scheduled snapshot (or live on demand status) of the organisation in the form of dashboards, briefing books, board reports, management reports, project reports and multi page periodic report packs, **ideal for communicating "Local Offers"**



CorPortfolio allows organisations to automatically update the assembled information on a scheduled basis. Text within the portfolio – comments, summaries, recommendations, decisions and action plans, can either be embedded automatically or added collaboratively. Executive portfolios can be printed, published over the web, or made available interactively online for virtual meetings, intranets or extranets with any browser.

IMPROVE MANAGEMENT REPORTING

- Assemble and organise an executive portfolio of performance information that can be printed or viewed online to enable virtual meetings and interactive performance reviews
- Combine reports, spreadsheets, graphics, and commentary into professional-quality briefing books, board reports, and management report packs
- Include comments, summaries, recommendations, decisions or planned actions

STREAMLINE MANAGEMENT REPORTING PROCESS

- Reduce the time and cost for periodically updating management report packs and SMT presentations
- Schedule automated updates to coincide with regular meetings and presentations
- Use templates to establish consistent report layouts
- Assemble information from multiple sources – HMS systems, databases, spreadsheets, business intelligence applications, documentation and knowledge - into a single, concise portfolio.

CorBusiness

Most organisations have a broad array of business intelligence needs – from interactive analytical reports to graphical analysis, pivot tables, ad hoc reporting, operational reporting, advanced analytics (such as forecasting, data mining or “what-if” modelling), and dashboards. In the past, addressing all of those areas typically translated to lots of time, cost, and resources – mainly because a variety of tools and technologies are used to handle the data and display the results to business users.

CorBusiness is a unique business intelligence platform that can address all of an organisation’s requirements – within a single product that can be deployed rapidly and cost efficiently. A critical component of the CorHousing Performance Management application, CorBusiness provides rich capabilities for ad hoc reporting, analysis, alerts, dashboards, briefing books, and automated data collection and consolidation.

IMPROVE RESPONSIVENESS TO BUSINESS NEEDS

- Dramatically reduce time to create new reports

EMPOWER BUSINESS USERS

- Business users can customise reports and perform ad hoc analysis without IT resources

IMPROVE REPORT QUALITY

- Provide access to data from multiple sources, multi-level drill down, more reliable information, and most importantly - “One Version of the Truth”

IMPROVE OPERATIONAL EFFICIENCY

- Eliminate re-keying of data
- Reduce time for the month-end reporting cycle
- Reduce report maintenance

IMPROVE COLLABORATION

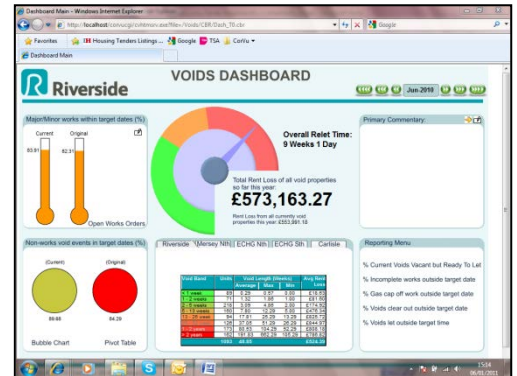
- Share ad hoc reports and analysis
- Record, share and report commentary
- Facilitate discussion to complete the feedback cycle



- Automatic exception alerting

DELIVER THE RIGHT INTERFACES FOR THE RIGHT PERSON

- Simple interfaces for non-technical users
- Empowering interfaces for appropriate business users
- Advanced analytical techniques available for business analysts



FLEXIBILITY

- Drill to unlimited dimensions 'on-the-fly' without limitations
- Intelligent Scheduler and multi-tier options for total control over where and when data is processed
- Leverage investments in existing data warehouses where appropriate
- Run from the desktop or through a browser

LOW TOTAL COST OF OWNERSHIP

- A single business intelligence platform that is easy to use, modify, and deploy
- Minimise the cost of implementation, training, maintenance, and upgrades
- Minimise the cost of software licenses

EASE OF USE

- User interface based on type of user
- Wizard-driven user interface for non-technical users
- Meta-data layer to simplify complex data sources

DATA ACCESS

- ADX technology provides rapid access to data from any source, including HMS systems, databases, OLEDB for OLAP, XML, flat files or APIs
- Data sources presented in tree/list view or Entity Relationship Diagrams (ERD)
- Access multiple data sources simultaneously
- Native database drivers for high performance

VISUALISATION

- Wide range of visual formats, including reports, dashboards, pivot tables, and numerous graph types
- Executive alerts - speedometer, thermometer, and other customisable indicators

REPORTING AND ANALYSIS

- Interactive analytical reports designed to support decision makers
- Filters, formulas, summarisation, aggregation, colour coding, sorting, and categorisation
- Dynamic graphs, pivot tables, and OLAP for ad hoc analysis
- Multi-level drill down, across and through, with visual indicators
- Ad hoc reporting using simple wizards
- Drag/drop, point/click simplicity

CorServer

CorServer provides the administration point of the CorVu modules and offers a variety of deployment options and configurations. It consists of the following components:

- (1) Native (ABA) gateway connections to any underlying data sources

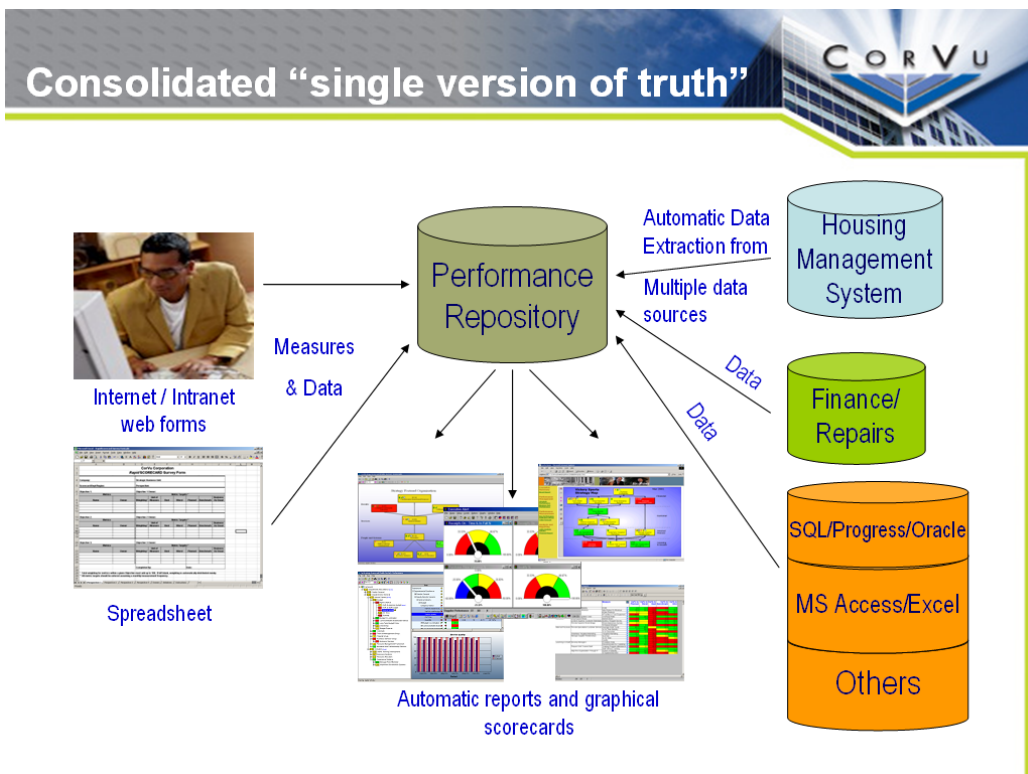
- (2) Knowledge library (metadata layer) to present all available fields/tables/data sources via simple point click interface for ad hoc report creation
- (3) 3-tier processing capability
- (4) Web enablement (ActiveX, Java, HTML)
- (5) Scheduling and broadcasting

CorVu is consistently selected as the most intuitive, user friendly, and configurable performance management system available to the UK Social Housing sector. End users require little or no training and even Admin users require only one day of training on the Performance Management Solution and two days of training on the integrated Business Intelligence component. Following this training (and by utilising our out of the box templates, PI's and frameworks) your Admin users will be capable of building, owning and maintaining an entirely bespoke performance management solution, geared specifically to your own organisation's needs, with little or no ongoing assistance from CorVu consultants.



How CorHousing Works

Currently most operational and financial data is stored in your existing databases. CorServer can connect directly to these underlying databases and consolidate this information with data retrieved manually from the scheduled measure/task update web forms, to enable all reporting and analysis to be easily created and deployed from within the CorVu toolset.



- Integrated Scheduler to automatically refresh daily dashboards, email web forms to measure/task/risk owners when updates required and execute the generation of periodic reports and management packs.
- Graphical/drillable visualisation of “The Golden Thread” from high level traffic light summary to most granular level of detail, to enable true “Evidence based decision making” and strategic alignment.
- Browser based deployment using secure login/password for zero footprint on end users P.C’s
- Simple point and click creation of ad hoc reports, graphs, pivot tables, dashboards, scorecards, and alerts with multi level/dimensional drill downs.
- Intuitive point and click analysis of all report outputs via filters, prompts, date selection, pick lists etc.
- Graphical visibility and tracking of performance against action plans, with Gantt charts incorporating initiatives, tasks, milestones, measures, budgets and due dates.
- Desktop publishing tool – CorPortfolio – to easily format, refresh and distribute periodic report packs
- Link any evidence to support the action/measure status or update to its location on your system.
- Completely configurable dashboards, KPI’s, frameworks, scorecards, reports and assessments
- Automatic data extraction from any underlying data source providing an intuitive ad hoc reporting tool for detailed analysis at the most granular level of data e.g at property/tenant/job level.
- Integrated Benchmarking reports against any other Housing provider (using 3 years worth of published Housing data) CorVu also facilitates local benchmarking amongst its user base.

CONTACT US

Contact us today to request a demonstration or further information on Rocket CorVu’s market leading performance management solution for the social housing sector.

Head Office & Customer Training Centre

4 The Square
 Stockley Park
 Uxbridge, UB11 1ET
 United Kingdom
 Tel: +44 (0) 8450 70 38 38