

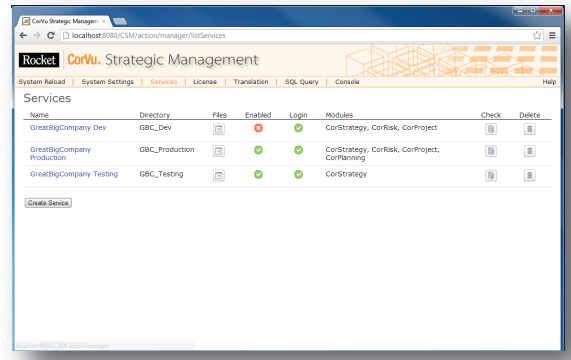
Rocket CorVu CSM V5.30

What's New in Rocket CorVu Strategic Management (CSM) V5.30?

A new version means new bells and whistles. Below is an overview of what's new in CorVu CSM V5.30.

control your data.

Reining in your data just got easier. CorVu CSM V5.30 offers finer, version-based control of worksheet data removal across a range of periods, as well as the ability to simultaneously update worksheet data with multiple worksheet web forms.

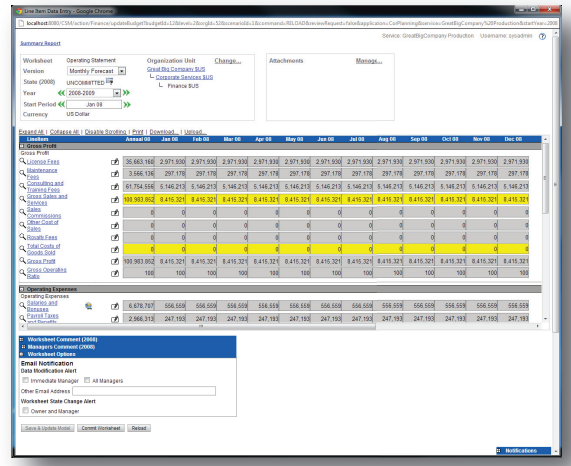


experience seamless, single sign-on.

Multiple system sign-ons are now a thing of the past. CorVu CSM V5.30 enables you to configure Integrated Windows Authentication, making sign-on and information access a breeze.

simplify user group imports.

With CorVu CSM V5.30, import abilities no longer begin and end with LDAP. Now you can import user group membership information from external sources such as Excel or .csv files.



securely integrate your email.

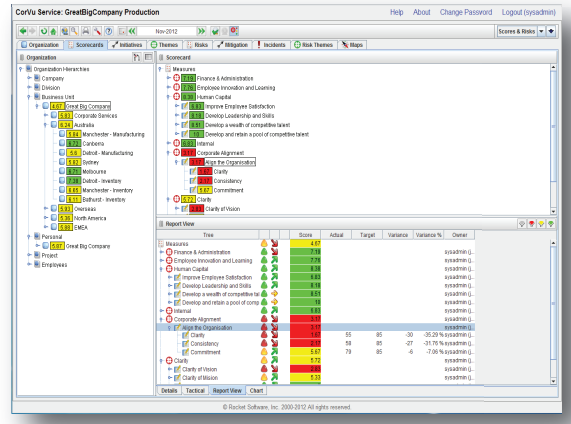
CorVu CSM V5.30's email configuration supports typical security options used by email. So you can easily integrate an internal CSM system with an external email system, and vice versa.

define your relationships.

CorVu CSM V5.30 makes it easy to define relationships between performance structures and manage relationships between individual performance objects.

support your balance.

CorVu CSM V5.30 provides improved support for opening balances for the starting year of a conversion via the CorPlanning worksheet web form.



get in tune with other users.

Wondering what your colleagues are up to? Multiple configuration and usability enhancements to worksheet web forms enable CorVu CSM V5.30 to notify you of other end-users' activity when you have a worksheet web form opened. Don't want to know? Notification can be enabled/disabled on a per service basis.



flexibly control your permissions.

CorVu CSM V5.30 provides more flexible control over which end-users have permission to manage performance objects by enabling you to specify permissions for each CSM module individually. Plus, with CSM V5.30, Read and Update class users can also manage performance objects.

improve workflow reminders.

Your measures aren't one-size-fits-all, and your reminders shouldn't be either. CorVu CSM V5.30 features flexible new measure, key risk indicator (KRI) and project milestone import and reminder systems that let you set your criteria for triggering reminders. Plus, you'll find enhanced multiple measure and task update forms in CSM V5.30.

start a new dialog.

Improved workflows need improved dialogs. All new and existing workflow reminder options are configured via an easier-than-ever dialog.

say goodbye to manual synchronization.

CorVu CSM V5.30 now automatically synchronizes worksheet structures after you add org units or planning template line items. Plus, modeling formula errors or warnings are now reported in the Diagnostic Pane along with a link to navigate directly to the planning template line item with the problematic formula.

pace your planning.

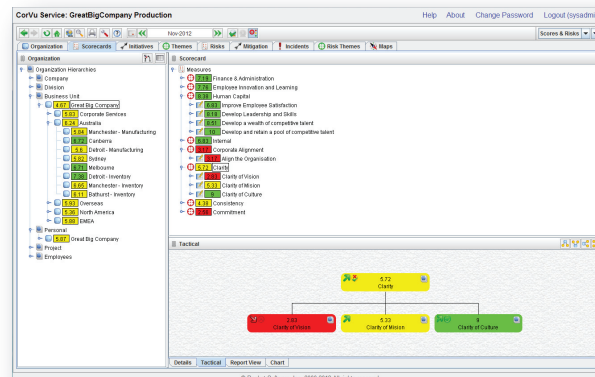
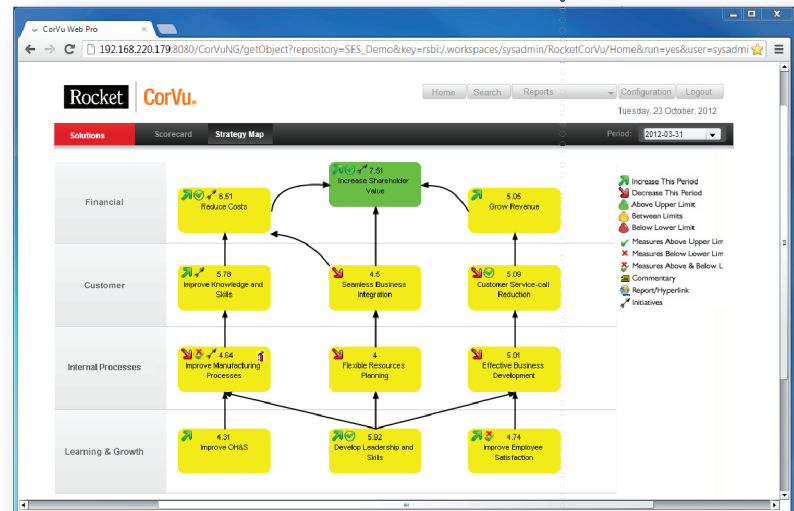
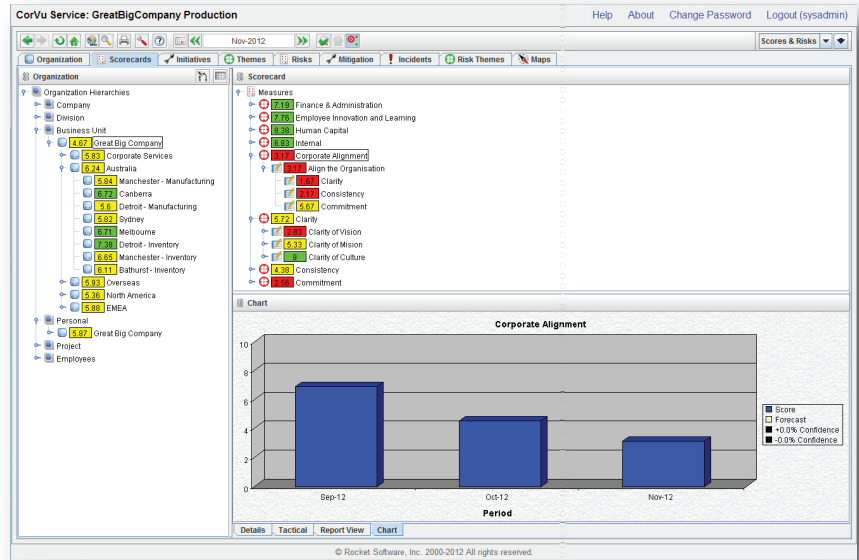
With CorVu CSM V5.30, Daily versions are available to support Daily planning. In the Daily frequency, you can view and enter periodic data in Weekly, Monthly or Yearly mode.

set your context.

Save yourself some time! The new CorVu CSM V5.30 context design editor offers improved ease of field customization for web forms. Define how context applies to each structure as opposed to defining context field-by-field.

make your icons meaningful.

Icons should mean something...and now they can. CorVu CSM V5.30 lets you customize icons used for performance objects based on their attributes.



- corvu.rocketsoftware.com
- corvu@rocketsoftware.com
- twitter.com/rocket_bi
- facebook.com/rocketcorvu
- youtube.com/rocketbia
- linkedin.com/rocketcorvu